

WÖHLER



WÖHLER VIS 350 VISUAL INSPECTION SYSTEM

Video inspection, position indicator, home function and locator.

The Measure of Technology



Made in
Germany

Wöhler VIS 350 Visual Inspection System

Intelligent camera head guides and tracks.

Video inspection in a case: With the new Wöhler VIS 350 camera system, you not only have everything you need to inspect waste water pipes, flue gas and ventilation lines as well as industrial systems – you can also precisely locate the damage and accurately document the results of the inspection.

Wöhler's new camera system is both compact and safely housed in a plastic case for transport and mobility. The system consists of a 20 m push rod cable with reel, a color camera head with a diameter of 40 mm and a large color monitor. Then there is the typical Wöhler control panel that ensures easy control of the camera head: The camera pans 360°, tilts 180° and offers best-possible lighting to carry out an all-round inspection of the inside of the pipe. Particularly practical: After panning and tilting, the home function automatically aligns the camera angle to straight ahead with a simple push of a button.

The camera can record video of what it sees as it travels along the line run. Even several tight 87° bends along the line are

no hurdle. When damage is discovered, one quick press of a button is all that is required to „shoot“ and save a photo. To be able to assess and specifically target repair work, we at Wöhler have perfected the technique of precisely locating damage. The actual meter count and the position of the head are displayed in the monitor. That, for example, is a huge help when dealing with extensive networks of pipelines. The top and bottom of the pipe are displayed on the monitor at all times and at how many degrees the camera is being guided up or down. Even low-cost, simple wireless location detection is available in the form of the new Wöhler L 200 Locator.

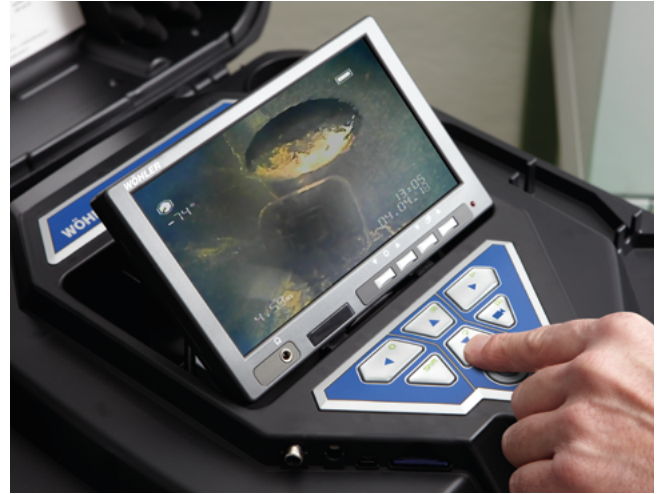


- ▶ Video inspection system proven over many years
- ▶ Position of camera head indicated in the display
- ▶ Keep your sense of orientation with home function – camera aligns itself automatically
- ▶ 4 hours flexibility – 2 rechargeable batteries for lasting mobility
- ▶ Built-in location transmitter facilitates wireless location detection



Powerful

Thanks to the optimum illumination of the colour camera head and optional additional lighting, the camera delivers pin-sharp images from the inspection area even in the dark.



Home function / Position and angle display

In addition to the digital meter count, the display also shows the position of the head. The Home button returns the camera head to its original position.



Localization

The camera head of the Wöhler VIS 350 is equipped with a transmitter as standard and can therefore be easily located with the Wöhler L 200 Locator.



Variety

Thanks to the pluggable Wöhler camera heads, pipes from Ø 40 mm to Ø 200 mm can be easily inspected. This picture shows the Wöhler turn/swivel camera head Ø 40.



Flexible

87° bends are effortlessly mastered by the color camera head, which can be rotated 360° and pivoted 180°.



Panoramic view

With the 20 m long push rod and the rotating and swivelling colour camera head, you won't miss a thing in the house connection line.

✂ Application

Damage analysis and inspection of:

- ▶ Sewer pipes from Ø 40 mm
- ▶ House connections up to Ø 200 mm
- ▶ Exhaust systems from Ø 56 mm
- ▶ Air ducts of ventilation systems
- ▶ Intermediate ceilings, cavities, shafts

⚙ Functionality

- ▶ CCS-image technology (Crystal Clear Screen)
- ▶ Waterproof, bright and flexible colour camera head with Ø 40 mm and 60 mm length
- ▶ 360° rotatable and 180° swivelling optics - even the smallest defects are not concealed
- ▶ Storage of recorded videos and photos on the 4 GB SD card
- ▶ Integrated transmitter in the camera head for locating with the Wöhler L 200 Locator
- ▶ Electronic position and angle display of the camera head in the display
- ▶ Home function for aligning the camera head in a straight position – Display parallel to the ground
- ▶ Electronic meter counting with display on the monitor
- ▶ Powerful TFT colour monitor for brilliant images
- ▶ Pivoting and removable monitor
- ▶ Mains-independent operation with a service life of up to 240 minutes with 2 exchangeable batteries
- ▶ Mobile complete equipment in a robust double shell case

📁 Data management

- ▶ Easy recording and storage of photos and videos on the 4 GB SD card for documentation and archiving for you and your customers
- ▶ Video output

📍 Locating with Wöhler L 200 Locator (optional)

- ▶ Integrated transmitter in the camera head enables exact localization of the camera head
- ▶ Localization for targeted repair of damage to pipelines
- ▶ Telescopic locator mount facilitates floor or ceiling
- ▶ Chalk holder with fat chalk for direct marking of the damaged area

Technical data

Monitor	TFT-Display	7" / 16:9 Format
	Video-Out	FBAS-Signal
	Weight	400 g
	Power supply	Space for 2 rechargeable batteries or via power pack
	Battery operating time	4 h
Wöhler Pan and tilt color camera head Ø 40 mm	Image acquisition angle Diagonal	137°
	Light source	12 white LEDs
	Degree of protection	waterproof to IP 67
	Dimensions	Ø 40 x 60 mm
Wöhler color camera head Ø 26 mm	Transmitter frequency	9,2 kHz
	Image acquisition angle Diagonal	128°
	Light source	12 white LEDs
	Degree of protection	waterproof to IP 68 (30 m, max. 30 min.)
Push rod	Dimensions	Ø 26 x 38 mm
	Transmitter frequency	9,2 kHz
	Length	20 m / electr. meter counting
	Diameter	Ø 6,5 mm

Detailed technical data can be found under www.woehler-international.com/P_107.dl



¹⁾ Only valid for Wöhler VIS 350 Visual Inspection System

²⁾ Excluded: Opening the housing, improper operation; for further details, see warranty conditions.

Product features

Article no.		8792 J	8955 J
		Wöhler VIS 350 Visual Inspection System	Wöhler VIS 350 ^{PLUS} Visual Inspection System
Applications		Inspection of waste water and air pipes / exhaust systems	
Main application		Inspection of waste water and air pipes / exhaust systems	
Dry areas (exhaust systems, air ducts, etc.)	from Ø 125 mm	• (1) (2)	• (1) (2)
	Ø 100 to Ø 125 mm	•	•
	Ø 70 to Ø 100 mm	•	•
	Ø 40 to Ø 70 mm		•
Wet areas (sewage pipes, down pipes, etc.)	from Ø 125 mm	• (2)	• (2)
	Ø 70 to Ø 125 mm	•	•
	Ø 40 to Ø 70 mm	•	•
Intermediate ceilings, cavities, shafts		•	•
Features			
Wöhler color camera head Ø 26 mm			•
Wöhler Pan and tilt color camera head Ø 40 mm		•	•
Video memory 4 GB SD-card		•	•
Digital meter counter (Resolution 0,04 m)		•	•
Analog Video-Out		•	•
Detection of camera head / damage with Wöhler L 200 Locator		•	•
Operating time 4 hours		•	•
Video settings		•	•
Video recording		•	•
Position and angle display		•	•
Fast forward / rewind videos		•	•
Lighting system, dimmable		•	•
Detachable camera head			•

• = included

(1) during inspection from top down only (2) Accessories required to guide the camera head centrally in the tube

Basic sets



		Wöhler VIS 350 Visual Inspection System	Wöhler VIS 350 Visual Inspection System	Wöhler VIS 350 ^{PLUS} Visual Inspection System
Camera head		Ø 40 mm	Ø 40 mm	Ø 26/40 mm
Scope of delivery	Wöhler VIS 350 Visual Inspection System	•	•	•
	TFT-display and 2 m connecting cable (Monitor removable)	•	•	•
	2 NiMH rechargeable batteries and charger	•	•	•
	Wöhler color camera head Ø 26 mm, detachable			•
	Wöhler Pan and tilt color camera head Ø 40 mm	•		
	Wöhler Pan and tilt color camera head Ø 40 mm, detachable		•	•
	SD Memory Card 4 GB and Mini USB Cable	•	•	•
	Push rod Ø 6,5 mm/30 m	•	•	•
	5 Replacement plastic domes	•	•	•
	Anti-Slide-Mat	•	•	•
	Complete plastic case	•	•	•
Article no.	8792 J	8991 J	8955 J	

• = included

Accessory sets
for Wöhler VIS 350



		Guidance set 100	Illumination-/ Guidance set 100	Location-/ Guidance set 100
Scope of delivery	Wöhler L 200 Locator			•
	Roller guide	•	•	•
	Protection sleeve	•	•	•
	Centering brush	•	•	•
	10 plastic domes		•	•
	Guidance weight		•	
	Supplementary Light Ring		•	
	Cleaning set in case			•
	Article no.	4240 J	9097 J	9098 J

Accessory sets
for Wöhler VIS 350^{PLUS}



		Additional lighting-/ Guidance set 100	Location-/ Guidance set 100	Location-/ Guidance Profi set 100
Scope of delivery	Wöhler L 200 Locator		•	•
	Roller guide	•	•	•
	Protection sleeve	•	•	•
	Centering brush	•	•	•
	Light ring, 26/40	•		•
	10 plastic domes		•	•
	Cleaning set in case			•
	Guidance sleeve 26			•
	Article no.	7050 J	9096 J	9093 J

• = included

Order Form

Product	Article no.	Qty.
Basic set: Wöhler VIS 350 Visual Inspection System	7350 J	
Basic set: Wöhler VIS 350 Universal camera	6350 J	
Basic set: Wöhler VIS 350 Universal camera	3885 J	
Accessory set: Guidance set 100	4240 J	
Accessory set: Illumination-/Guidance set 100	9097 J	
Accessory set: Location-/Guidance set 100	9098 J	
Accessory set: Additional lighting-/Guidance set 100	7050 J	
Accessory set: Location-/Guidance set 100	9096 J	
Accessory set: Location-/Guidance Profi set 100	9093 J	

Billing address/customer		Delivery address (if different to billing address)	
Company	_____	Company	_____
Name	_____	Name	_____
Street/house no.	_____	Street/house no.	_____
ZIP code/City	_____	ZIP code/City	_____
Country	_____	Country	_____
Telephone	_____	Fax	_____
Mobile	_____	E-Mail	_____
Customer number	<input type="text"/> <input type="text"/> <input type="text"/> <input type="text"/> <input type="text"/> <input type="text"/>		
Date	_____	Signature or company stamp	_____

WÖHLER

Wöhler Technik GmbH
 Headquarters Germany
 Wöhler-Platz 1 · 33181 Bad Wünnenberg
 www.woehler-international.com

Your contact