



# Manual

## Starflow Ultrasonic Doppler

### Instrument

### Model 6526

This equipment has been tested and found to comply with the limits for a Class A digital device, pursuant to Part 15 of the FCC Rules in the U.S.A. These limits are designed to provide reasonable protection against harmful interference when the equipment is operated in a commercial environment. This equipment generates, uses, and can radiate radio frequency energy and, if not installed and used in accordance with the instruction manual, may cause harmful interference to radio communications. Operation of this equipment in a residential area is likely to cause harmful interference in which case the user will be required to correct the interference at his own expense.

This equipment has been tested for compliance with European regulations as follows:  
Application of Council Directive:  
2004/108/EC

Standards to which Conformity is declared:

EN-61000-6-1:2001  
EN-61000-4-2:1995  
EN-61000-4-3:1995  
EN-61000-4-4:1995  
EN-61000-4-6:1996  
ENV-50204:1995

Any changes or modifications to this equipment not expressly approved by the manufacturer Unidata Pty Ltd could void the user's authority to operate this equipment.



## Revision History

File name / Revision	Date	Authors & Change Details	Checked/ Approved
Previous version BX	2004	RS/ JH	
Unidata Manual - 6526 Starflow User Manual Issue 2.0	2007	AB/CB/JH/MS/KC	
Unidata Manual - 6526 Starflow User Manual Issue 3.0	2008	AB/CB	
Unidata Manual - 6526 Starflow User Manual Issue 3.1.doc	2008	DM	
Unidata Manual - 6526 Starflow User Manual Issue 4.0.docx - Reformat	12 09 13	MP	
Unidata Manual - 6526 Starflow User Manual Issue 4.0-ines.docx	30 01 15	IM,CB	CB
Unidata Manual - 6526J Starflow User Manual Issue 5.0.docx	04 01 16	IM,PD	CB
Unidata Manual - 6526 Starflow User Manual Issue 17 01 2020.docx	17 01 20	DM (Update 3.1)	MS

Copyright © Unidata Pty Ltd 2000-2019. All rights reserved. No part of this publication may be reproduced, transmitted, transcribed, stored in a retrieval system, or translated into any spoken or computer language, in any form or by any means. Electronic, mechanical, magnetic, optical, chemical, manual or otherwise, without prior written permission of Unidata Pty Ltd 40 Ladner St, O'Connor Western Australia 6163



## TABLE OF CONTENTS

<b>1.0</b>	<b>Introduction</b> .....	<b>1</b>
<b>2.0</b>	<b>Operating Principles</b> .....	<b>2</b>
2.1	How Starflow Measures Velocity .....	3
2.2	Speed of Sound in Water .....	4
2.3	Factors Affecting Data Accuracy .....	5
<b>3.0</b>	<b>Specifications</b> .....	<b>6</b>
3.1	Battery Duration Table .....	6
3.2	Memory Duration Table .....	6
<b>4.0</b>	<b>Installation</b> .....	<b>8</b>
4.1	Site Considerations .....	8
4.2	Starflow Mounting .....	8
4.3	Power Considerations .....	12
4.4	Starflow 9 Way Vented Cable Connection Table .....	12
4.5	Drying Tube and Desiccant .....	12
<b>5.0</b>	<b>Starlog v4 starflow instrument only software installation</b> .....	<b>12</b>
<b>6.0</b>	<b>Starflow Scheme Management</b> .....	<b>20</b>
6.1	Scheme Editor .....	20
<b>7.0</b>	<b>Programming starflow</b> .....	<b>33</b>
<b>8.0</b>	<b>Test Mode</b> .....	<b>35</b>
8.1	Scheme Information .....	36
8.2	Log Information .....	36
8.3	Scheme Channels .....	37
8.4	Log Buffers .....	37
<b>9.0</b>	<b>Unloading Data from Loggers</b> .....	<b>39</b>
<b>10.0</b>	<b>Viewing Data</b> .....	<b>41</b>
10.1	Source Data File .....	41
10.2	Viewing the Data File .....	42
<b>11.0</b>	<b>Diagnostics</b> .....	<b>44</b>
11.1	Comms Window .....	44
11.2	Upgrade Firmware .....	45
11.3	SDI-12 Test .....	46
11.4	Velocity Trace .....	46
<b>12.0</b>	<b>Velocity Histograms</b> .....	<b>47</b>
12.1	Inherent Factors in Doppler Histograms .....	49
12.2	Channel Characteristics Affecting the Signal .....	50
<b>13.0</b>	<b>Flow Measurement Extensions</b> .....	<b>59</b>
13.1	Overview of Creating a Flow Scheme .....	59
<b>14.0</b>	<b>Computer Communication</b> .....	<b>69</b>
14.1	Communications (Starlog) Protocol .....	69



14.2	Memory Layout.....	69
14.3	Hardware Register Information .....	69
14.4	Starflow - Instructions.....	70
<b>15.0</b>	<b>Starflow SDI-12 Interface.....</b>	<b>71</b>
15.1	Introduction.....	71
15.2	Using Starflow as An SDI-12 Sensor .....	72
15.3	Starflow SDI-12 Implementation Notes .....	73
15.4	SDI-12 Test .....	74

## 1.0 INTRODUCTION

The Starflow Ultrasonic Doppler Instrument is a unique combination of water velocity, depth and temperature instruments integrated with a solid state logger.

By using digital signal processing techniques, Starflow is able to perform in a wide range of environments. It is used to record flows in pipes, channels and small streams and operates in a different range of water qualities from fresh streams to primary sewage channels.

The instrument is intended for economically recording flows in channels, culverts and pipes. It can also be used where existing techniques are unsuitable or too expensive. It is particularly useful at sites where no stable stage/velocity relationship exists and where flows are affected by variable tail water conditions, culvert entry blockages, pipe surcharging, other unstable flow conditions, or even reverse flows.

Starflow is mounted on (or near to) the bottom of the stream/pipe/culvert and measures the velocity and depth of the water flowing above it.

This enables a complete stream study to be undertaken with a single instrument.

### Models:

- 5m depth range (Model 6526J-51 Starflow Kit)
- 2m depth range (Model 6526J-21 Starflow Kit)

### Starflow system consists of:

- Model 6526J Starflow instrument
- Model 6603DT Drying Tube and Desiccant.
- Model 6603D-SDI Adaptor cable for connecting a Starflow to a computer RS232 & battery
- Model 6526M-2 Stainless Steel Mounting Bracket
- Model 6307C-AUE STARLOG V4 (instrument only) Starflow Licence Key



## Accessories:

The following accessories should be purchased according to your application requirements.

- Model 6907B-14 12V, 14Ah Sealed Lead Acid Battery
- Model 6904I-10 10W Solar Recharge Panel & Mount
- Model 6904I-20 20W Solar Recharge Panel & Mount
- Model 6702S Starflow Weatherproof Enclosure
- Model 6705A Small Expanding Clamp SS expanding turn-buckle and band clips. 100mm wide, 100mm long, 50mm expansion. Use in pipes up to 600mm (24") in diameter
- Model 6705B Large Expanding Clamp SS expanding turn-buckle and band clips. 100mm wide, 150mm long, 100mm expansion. Use in pipes over 600mm (24") in diameter
- Model 6705D 1800mm Band Segment 100mm wide, 0.6mm Stainless Steel band with 50mm spaced locating holes at both ends
- Model 6705F Band Joiner Stainless Steel joiner

## 2.0 OPERATING PRINCIPLES

The Starflow measures velocity, depth and temperature each scan interval (15 to 600 seconds) and logs data according to your specification in the scheme. The measured data are logged and then scaled and processed during presentation and processing.

The Starflow contains a 512K micrologger which controls the instrument's operation and logs the measurements:

**Water Velocity** in the vicinity of the Starflow is measured acoustically by recording the Doppler shift from particles and microscopic air bubbles carried in the water.

**Water Depth** is measured using a solid state pressure sensor mounted underneath the Starflow and vented to atmospheric pressure via a vent tube inside the signal cable.

Water pressure is sensed via a pressure damping manifold which has been designed to sense depth in front of the velocity transducer.

The shape of the sensing manifold is designed to reduce velocity effects on the pressure sensor. These effects are significant at velocities above 2m/sec.

The vent tube is opened to the atmosphere through the signal cable connector and a vent tube desiccant canister is fitted to ensure moisture does not enter the vent tube.

**Temperature** is measured to refine the acoustic recordings. These are related to the speed of sound in water, which is significantly affected by temperature.

**Battery Voltage** is measured to allow the Starflow to stop operating if the supply voltage is below defined limits.

**Flow**, flow rate and total flow values are computed by Starflow from user defined channel dimension information (see Flow Measurement Extensions on page 59). Alternatively, the flow rate may be computed from the refined logged data using PC based computation of area x mean from each logged point. Total flows are then accumulated as rate x time.

The micrologger switches on the Starflow instrument once per scan. The scan rate is specified by the user. Each time the Starflow switches on, it performs the following tasks:

**Measurement** – Each scan interval (user adjustable from 15 seconds to 10 minutes) the micrologger switches the Starflow on. It then measures velocity, depth and temperature these signals are then stored in the micrologger memory.

**Analysis** – The micrologger then performs data processing and analysis defined in the scheme you have loaded. This includes averaging, maximum/minimum and totalizing calculations. Flow computation is also performed at this time.

**Communications** – If a computer is connected to the Starflow instrument, the micrologger establishes communications via the RS-232 channel. An SDI-12 interrogation sequence will also be initialised at this time. Note: RS-232 and SDI-12 communications will occur simultaneously with other operations.

**Datalogging** – When the scan occurs at a log interval (from 15 seconds to 1 week) the micrologger records user defined measurement values (velocity, depth, flow, etc) into its memory (log buffer). Here, the data remains until the Starflow is unloaded into a computer.

## 2.1 How Starflow Measures Velocity

When sound is reflected from a moving target the frequency of the sound is varied by the velocity of the target. This variation is known as a Doppler shift. To measure water velocity in open channels Starflow exploits the particles moving with the water as acoustic targets (or scatterers) from an instrument fixed to the bed or bank.

There are two distinct types of Doppler instruments that can be used to measure water velocity:

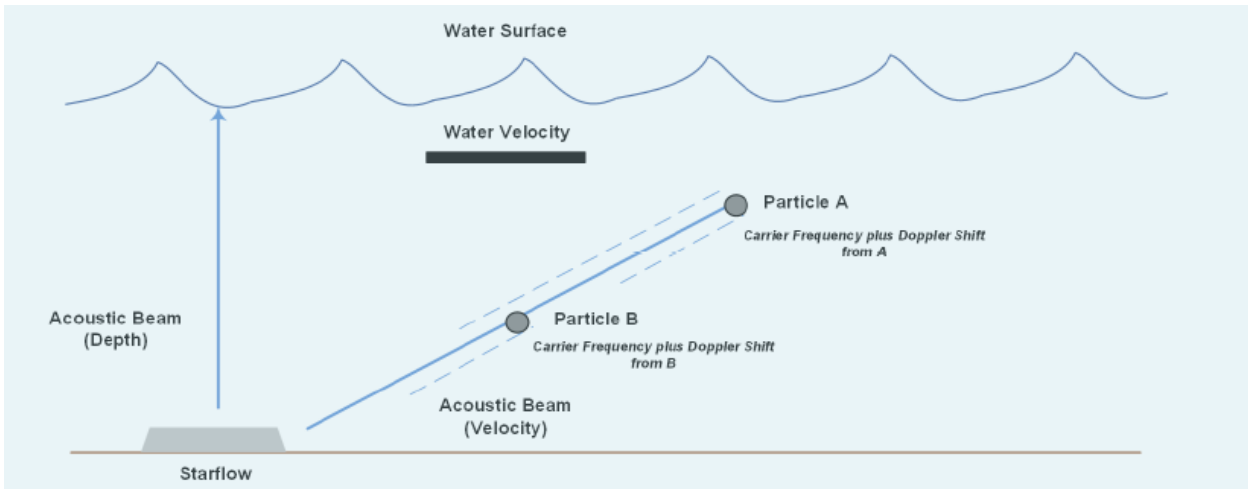
**Coherent** (or profiling) Dopplers transmit encoded pulses with the carrier frequency at target locations, and only measure signals reflected from these targets. This allows the velocity in a stream to be profiled. These instruments are complex and expensive.

**Incoherent** (or continuous) Dopplers like the Starflow, emit a continuous signal and measure any signals returning from scatterers anywhere and everywhere along the beam. These are resolved to a mean velocity that can be related to a channel velocity at suitable sites.

During a measurement cycle, ultrasonic sound is transmitted continuously at a fixed frequency, called a carrier. A receiver listens for reflected signals from any targets. A measuring circuit detects any frequency changes. A processing system accumulates and analyses these frequency changes and calculates a representative Doppler shift from the range received.

Each Doppler shift is directly related to the water velocity component along the beam. This is a physical relationship and if you know the speed of sound in water you can calculate the velocity of the reflector and thereby the velocity of the surrounding water. Starflow instruments do not need calibration for velocity measurement.

The velocity measured is the component along the beam. As the beam is at an angle to the flow, the Velocity is adjusted by the angle cosine.



## 2.2 Speed of Sound in Water

Velocity measurements are directly related to the speed of sound in water. The factor used to scale Starflow Velocity measurement is based on the speed of sound in fresh water at 20°C (see table below). This velocity of sound gives a calibration factor of 0.550mm/sec per Hz of Doppler shift.

This calibration factor may be adjusted for other conditions, for example the calibration factor for sea water is 0.5618mm/sec/Hz.

The speed of sound varies significantly with water density. Water density is dependent on pressure, water temperature, salinity and sediment content. Of these, temperature has the most significant effect and it is measured by the Starflow and applied in the correction of velocity measurements.

The Starflow corrects for the variation of the speed of sound in water due to temperature using a factor of 0.00138mm/s/Hz/°C. This correction is a best fit for water temperatures between 0°C to 30°C. The following table shows how the speed of sound varies with temperature and between fresh and sea water.

Temperature (°C)	"Fresh Water"	"Sea Water"
0	1402	1449
5	1426	1471
10	1447	1490
15	1466	1507
20	1482	1521
25	1497	1534
30	1509	1545
35	1520	1555

*Velocity of Sound in Water (m/s) at atmospheric pressure*

Bubbles in the water are desirable as scatterers, but too many can affect the speed of sound. In air the speed of sound is about 350 m/s.



## 2.3 Factors Affecting Data Accuracy

Starflow measures velocity to an accuracy of  $\pm 2\%$  and depth to  $\pm 0.25\%$  of calibrated range. This is logged to a resolution of 1 mm/sec and 1mm respectively. The transducers have been calibrated and are expected to be stable for long periods provided they are not physically damaged, blocked or buried.

The purpose of the Starflow system is to produce flow data. This is the product of the cross section (derived from measured depth) and velocity data, each of which is modified by user defined factors before use. There are many opportunities for errors to accrue in the process and degrade the result. These can be reduced or eliminated by using the instrument properly. Some of the more significant potential error sources follow.

### 2.3.1 Alignment with Flow

For the calibration to be valid, the transducer needs to be horizontally and vertically aligned with the flow. While Starflows are calibrated pointing into the flow, they can be pointed downstream with little loss of calibration accuracy. You may want to do this when fouling of the sensor face is a problem. Any angled flow in the horizontal plane will reduce the recorded velocity. A 10 degree angle will reduce the velocity recorded by 1.5%.

More significant errors will result from angled flow in the vertical plane. The sensors are manufactured to project acoustic signals at  $30^\circ$  above horizontal when the sensor is mounted horizontally. A  $10^\circ$  vertical flow angle change will cause errors of approximately  $+8.5\%$  ( $@20^\circ$ ) and  $-11.5\%$  ( $@40^\circ$ ).

### 2.3.2 Instantaneous Versus “Averaged” Velocity

When you observe Starflow velocities, they will be seen to vary by 10% or more from scan to scan at some sites. Because Starflow is very sensitive to variations in velocities, you are able to see the natural velocity changes in the channel.

Although the discharge in a channel may be reasonably constant for a period of time, the velocity distribution is always changing. Different velocity streams wander from side to side and bed to surface as they progress down the channel. Turbulent swirls and eddies are carried downstream for long distances while they slowly decay. Hydrographers will be used to having this action partly removed by the mechanical inertia of a current meter and the period over which a typical measurement is timed. However all will have noticed that the rate of revolutions of the current meter varies during the timing period.

Continual velocity logging at one location with a Starflow will show these cyclic velocity pulsations. The characteristics will be different for different sites and will vary with discharge. Cycles will typically include short period fluctuations (a few seconds) overlaid on longer cyclic fluctuations (up to many minutes). Longer term pulsations may also be seen particularly in larger streams when in flood.

When comparing Starflow velocity and mechanical current meter readings, the display should be observed long enough to estimate the mean of the readings. This should be adopted as the logged velocity to compare with any check measurements.

When measuring velocity data Starflow samples for several seconds during each 1 minute scan. It is recommended that all velocity measurements are averaged over the log interval. This attenuates short frequency variations.

### 2.3.3 Conversion of Logged to Mean Velocity

The logged velocity data may have to be adjusted during post processing to reflect a mean velocity for the channel. The factors used will be site specific and have to be determined by the operator. This is done by obtaining a mean channel velocity by conventional techniques and comparing it with the average logged velocity. If necessary this process should be repeated at various discharges.

Where the relationship is complex or unstable, the accuracy of this method is compromised.

In laminar flow conditions the channel mean velocity could be expected to be between 90% and 110% of the logged velocity.

In small channels (say a 500mm diameter pipe) the factor may be close to 100% as a representative area of flow will have been “seen” by Starflow and contributed to the logged velocity.

In larger channels only the area adjacent to Starflow will be “seen” and the relationship will depend on how this portion relates to the vertical and horizontal velocity distribution in the channel. An instrument located in the centre of the stream would normally be in a higher velocity area. However in a deep channel Starflow may only see the slower portion of the velocity profile.

## 3.0 SPECIFICATIONS

### 3.1 Battery Duration Table

12V Battery Capacity	Scan Rate		
	5 min	1 min*	15 sec
7Ah	130 days	26 days	7 days
12Ah	225 days	44 days	11 days

\*Factory setting.

Battery Duration estimates assume battery is fully charged using a modern high quality charger. Battery self-discharge will be higher at high ambient temperatures, and battery terminal voltage available will be reduced at low ambient temperatures, which will reduce the above estimates. These factors should be taken into account when sizing a battery. Where possible, an onsite recharging system is recommended.

Due allowance must also be made for interrogation by computer/modem.

### 3.2 Memory Duration Table

Number of Parameters Recorded	Log Interval	
	15 min*	10 min
Velocity & Depth (2)	300 days	250 days
Velocity, Depth & Temperature (3)	200 days	160 days
Velocity, Depth, Temperature & Battery (4)	150 days	125 days

\*Factory setting.

**Mechanical**

Size: 290mm x 70mm x 25mm (L x W x H)  
Weight: 850g (2kg with 15m cable)  
Material: PVC body, Stainless steel mounting plate  
Cable: 15 metre, 9 way vented cable

Storage Memory: 512kbyte, CMOS RAM  
Log Interval: Programmable: 5 seconds to 1 week  
Communication: RS-232, 300–38400 baud  
SDI-12: 1200 baud, instrument channel  
Flow computation: Flow Rate, Totalised Flow  
Control: CMOS output trigger  
Operating Temperature: 0°C to 60°C water temperature

**Velocity**

Range: 21mm/s to 4500mm/s bidirectional  
Resolution: 1mm/s  
Accuracy: 2% of measured velocity  
Signal Path: 30° above horizontal

**Depth**

Ranges: Model 6526J-21 0 to 2m  
Model 6526J-51 0 to 5m  
Resolution: Model 6526J-21 0 to 1m – 1mm; 1 to 2m – 2mm  
Model 6526J-51 0 to 2.5m – 2.5mm; 2.5 to 5m – 5mm

Accuracy: ±0.25% of calibrated lower range. ±0.50% of calibrated high range  
Type: Hydrostatic pressure sensor vented to atmosphere

**Temperature**

Range: -17°C to 60°C  
Resolution: 0.1°C

**Power**

Battery: External 12VDC  
Voltage: 12V to 15VDC  
Current: 70 µA standby, 90mA during communication, 200mA during measurement  
Average Power: 0.3W (1 min scan rate)

**Factory Settings**

Scan Rate: 1 minute  
Log Interval: 15 minutes  
Max. Sampling Dur: 2 seconds  
Maximum Samples: 200  
Quartile: 100%

## 4.0 INSTALLATION

Starflow is a very effective alternative to conventional flow measuring installations for small streams. It is unobtrusive and ideally suited to flow conditions in culverts, channels and drains. Cost, maintenance and environmental impact of new installations is minimized by avoiding the construction of conventional flow measuring structures.

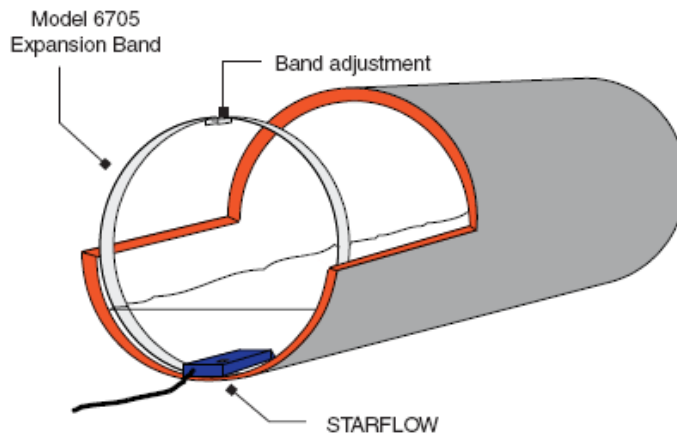
### 4.1 Site Considerations

The Doppler signal received, and the accuracy of the computed velocity, is related to the flow and cross-section characteristics of the site. A suitable site has the following features:

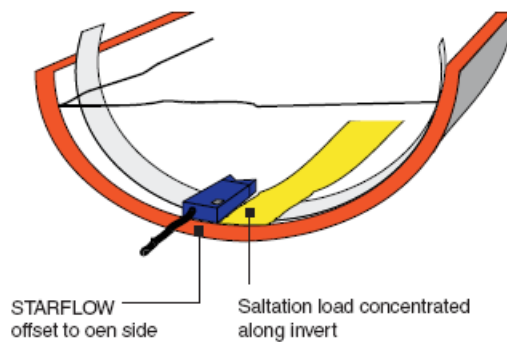
Feature	Description
Flows are laminar and the velocity measured by the transducer can be related to the mean velocity of the channel.	Velocity is measured from a limited path in front of and above the acoustic sensors. This area varies with the amount of suspended material in the water and the channel characteristics. The user has to determine the relationship between the measured and mean velocity.
The channel cross section is stable.	The relationship between water level and the cross-sectional area is used as part of the flow computation.
Velocities are greater than 20 mm / second.	The transducer does not process velocities slower than this. The maximum velocity is 5 metres / second. The transducer will measure velocities in both directions.
Reflectors are present in the water.	Generally the more material in the water the better. Starflow generally works well in clean natural streams but problems may be encountered in extremely clean water.
No excessive aeration.	Bubbles are good scatterers and occasional small bubbles will enhance the signal. However the speed of sound can be affected if there are excessive amounts of air entrapped in the flow.
The bed is stable and Starflow will not be buried by deposits.	Some coating and partial burying has little effect on the measured velocity but it should be avoided.
Starflow Pointing Upstream or Downstream?	Pointing the sensor end downstream will stop it accumulating debris; however in some channels the sensor body may disturb the velocity distribution unacceptably. The velocity reading will be positive when pointing upstream and negative when pointing downstream. The Starflow may be configured to only read positive velocities regardless of water flow direction.

### 4.2 Starflow Mounting

A typical installation is in a pipe or culvert with diameters between 300 and 2000 mm. The Starflow should be located near the downstream end of a straight and clean culvert, where non-turbulent flow conditions are maximised. The mounting should ensure the unit sits right on the bottom to avoid debris catching beneath it.



The sensor can be located at the invert of the pipe but may be better located slightly to one side of the invert to avoid alluvial material or heavy debris transported during higher flows. It will not be affected by being located partly up the side of a pipe provided it remains aligned with the flow.



In culverts the sensor can be mounted on a stainless steel band that is slipped inside the pipe and expanded to lock it in position. In open channels special mounting brackets may be required. The Model 6705 Expanding Band kit allows you to install a Starflow instrument into a pipe. Kit design is modular, allowing it to fit into any size pipe. The band is flexible enough to fit irregular shapes, such as ovoid (egg shaped) sections. All components are made from stainless steel and the band fittings are 100mm wide to fit the standard Starflow mount.

Although pipes come in standard diameters, their dimensions are not always accurate. This means that an expanding band system must allow the installer to make adjustments on site. To achieve this, the Model 6705 system is made so that general assembly can be done in the workshop, whilst adjustments can be made in the field with hand tools. An expanding turn-buckle locks the band into the pipe.

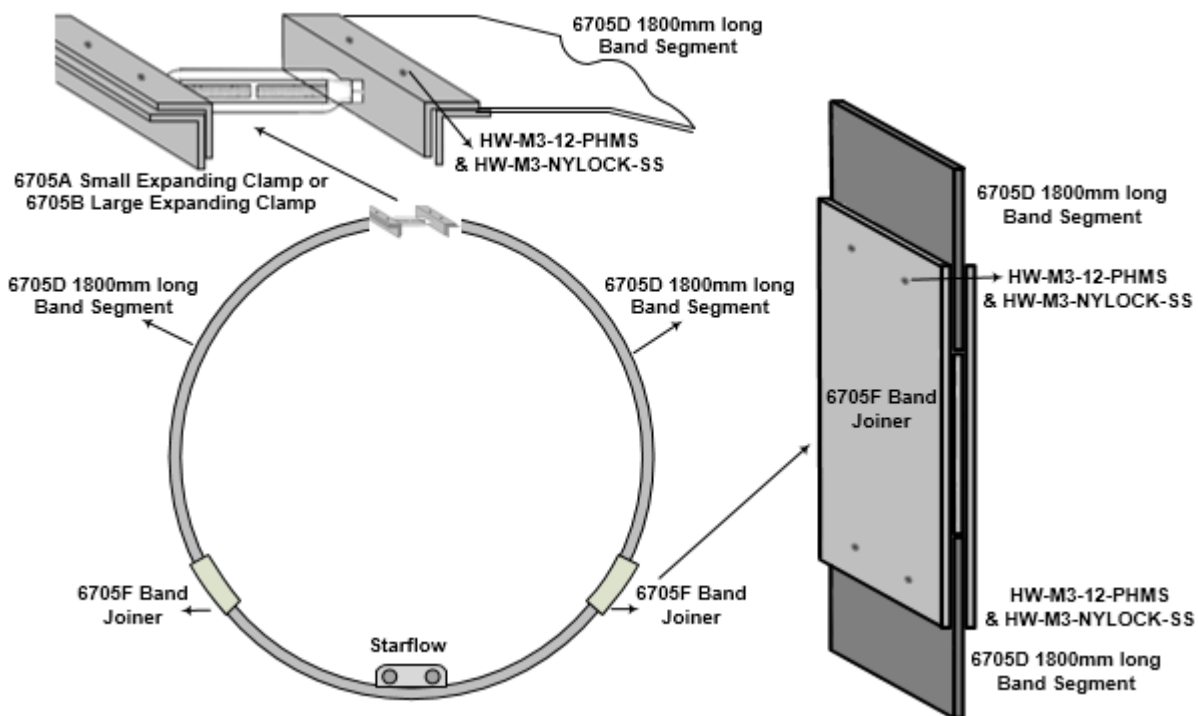
To determine what components are needed for a Starflow pipe installation, you need to know the pipe diameter.

Pipe Diameter	Clamp	Bands	Joiners
Up to 600mm	6705A	6705D	-
600 - 1200mm	6705B	2 x 6705D	1
1200 - 1800mm	6705B	3 x 6705D	2

**Note:** Pipes less than 300mm diameter are NOT RECOMMENDED for Starflow installation due to the instrument's size.

Do the following:

1. If the inside circumference of the pipe is ACCURATELY known, then cut the band assembly to this length LESS 25mm for fitting clearance. Circumference (length) = Diameter x 3.14
2. Arrange the clamp, band(s) and joiner(s) so that Starflow unit will be positioned at the bottom (invert) of the pipe and an Expanding Clamp at the top (obvert) of pipe (see diagram).



3. Drill 4 x 5mm holes, 85mm spaced in the centre of the band to locate the Starflow instrument. Use the Starflow mounting clamp 6526M-2 as a guide.

Use a small pilot drill bit (about 2mm) then finish with the 5mm bit. (When drilling stainless steel, DO NOT stop once drilling has begun, as this will immediately blunt the drill bit.

4. Use M3 x 12mm stainless steel machine screws and M3 nylocks (supplied) to connect all parts. (If pop rivets and the pop rivet gun are available they can be used as the replacement for the screws and nuts sets)

**Note:** the band length must be measured to include the Expanding Clamp (fully closed), bands and joiners all together as shown.



1. Position and tighten Starflow and band, then bolt the Starflow mount to the band
2. Fold the band into a circle to easily fit inside the pipe and position into place inside the pipe
3. Slip the loose end of the band into the expanding clamp
4. Adjust clamp until band is tight inside pipe (use spanner if necessary)



### 4.3 Power Considerations

If the battery is not continuously recharged either by a solar recharge system or some other recharge system, it may require replacement. All data is preserved for about half an hour after that data can't be recovered.

**Note: If the 12V power is disconnected for more than 30 minutes, recorded data will be lost.**

**Note: If the 12V power falls below 11V, the Starflow will stop recording, it enters “Sleep Mode.”**

### 4.4 Starflow 9 Way Vented Cable Connection Table

SQL Pin#	Wire Colour	Signal Description
1	red & orange	+12V – Battery +ve
2	yellow	RxD(OUT) – RS-232 serial data from Starflow
3	black	TxD(IN) – RS-232 serial data to Starflow
4	white	RTS(IN) – Request to Send
5	purple	SDI-12 – Data In/Out – HSIO Clock and – Counter 0**
6	blue	OUT – Pump Sampler – CMOS control HSIO Data
7 centre	green & brown	GND – Battery -ve/signal ground

\*\*When in counter mode, only voltage pulses of 7.5V will be recognised.

### 4.5 Drying Tube and Desiccant

The Starflow cable contains a tube to vent the water depth pressure sensor to atmospheric pressure. It is very important to ensure that NO MOISTURE enters the vent tube, as this will cause erratic depth measurements.

The Starflow connector vents the cable through a Drying Tube (Model 6603DT) containing “Silica Gel” desiccant.

Replace or regenerate the desiccant when it changes colour from blue to pink.

## 5.0 STARLOG V4 STARFLOW INSTRUMENT ONLY SOFTWARE INSTALLATION

To install “Starlog 4 / Starflow Instrument only Software” for use with the Starflow instrument onto a laptop or PC you have to have administrator rights to the PC or Laptop. If not, please consult you IT manager.

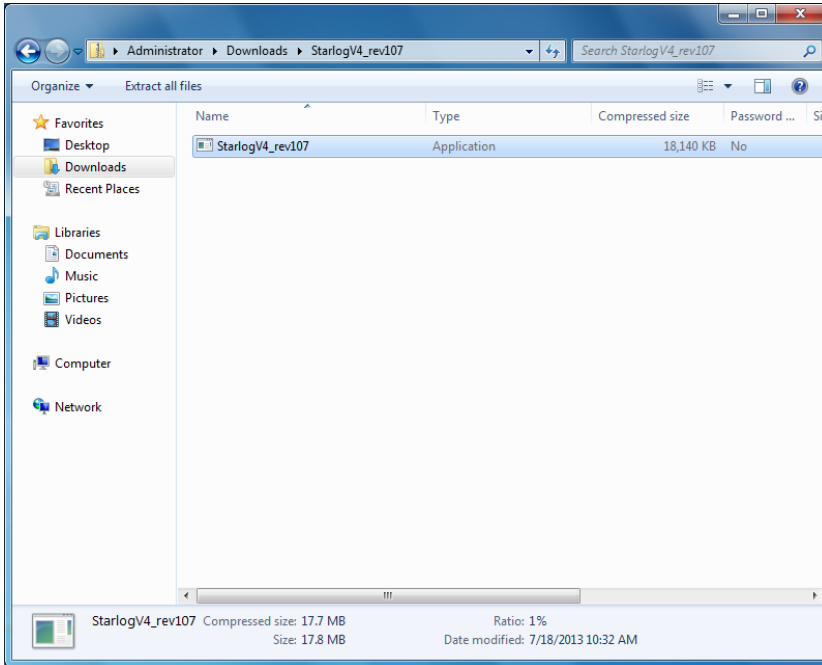
Following procedure requires the use of one “Unidata Recorder Software for Starflow” Software Key. The Software Key can be found on the program disk that was supplied with the Starflow instrument.

A fresh copy of StarlogV4 can be obtained from the Unidata Website at the following address.

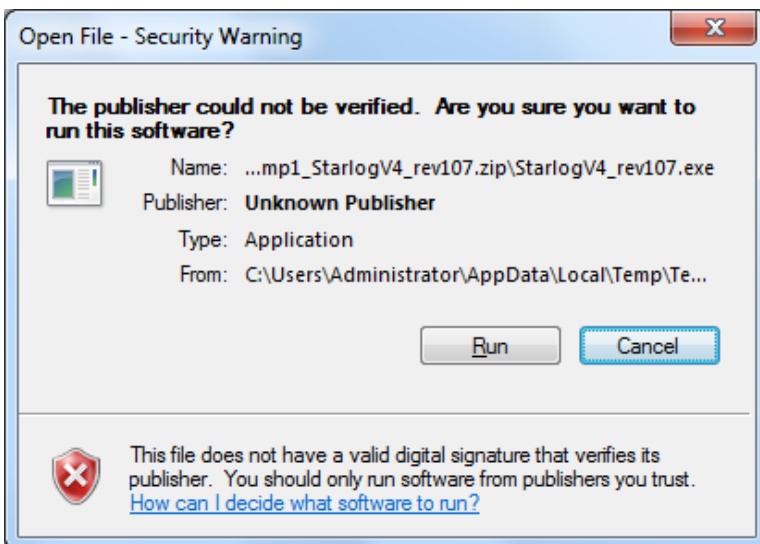
<https://www.unidata.com.au/products/datalogger-systems/datalogger-starlog-v4-software/>



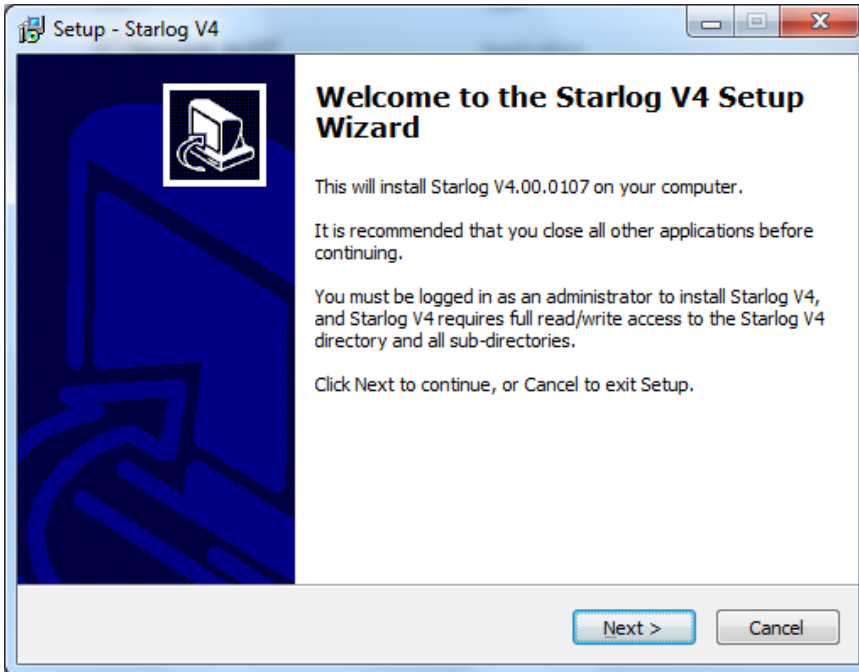
If you get a fresh copy off the web you can be sure you have the latest version of the software.



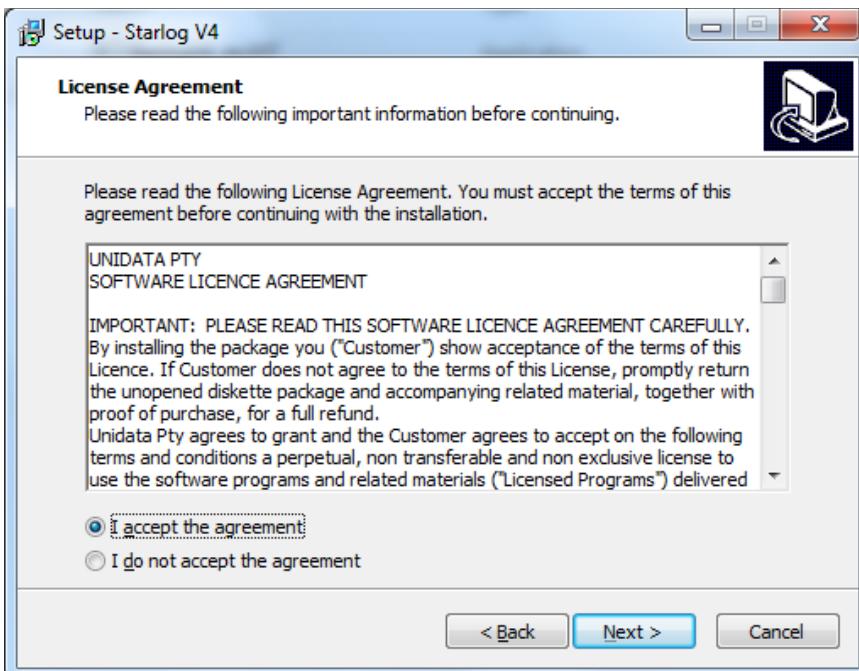
Once the download is complete, locate and run the StarlogV4.exe file. Ensure you have administrator rights before running this file.



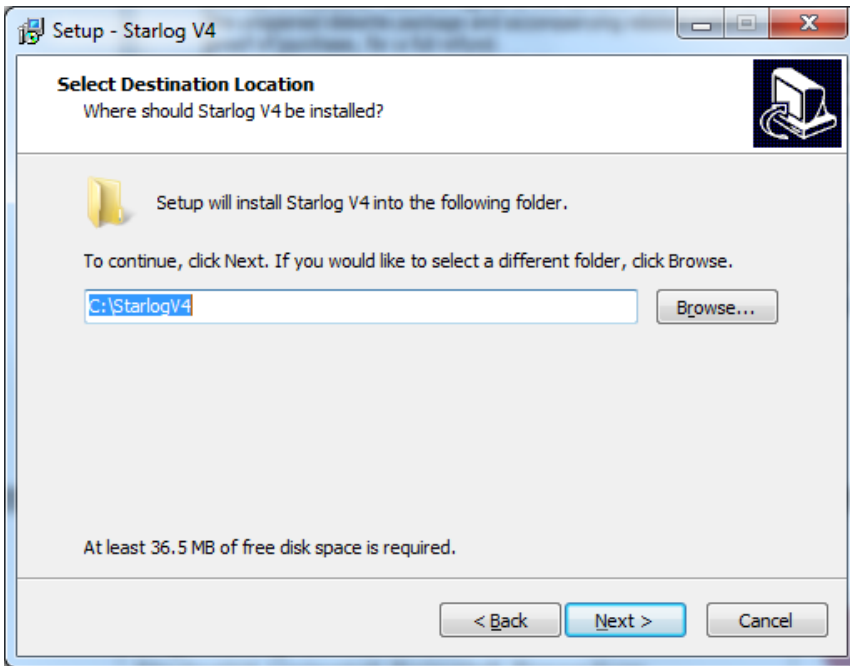
Press “Run” when you see the dialog box above.



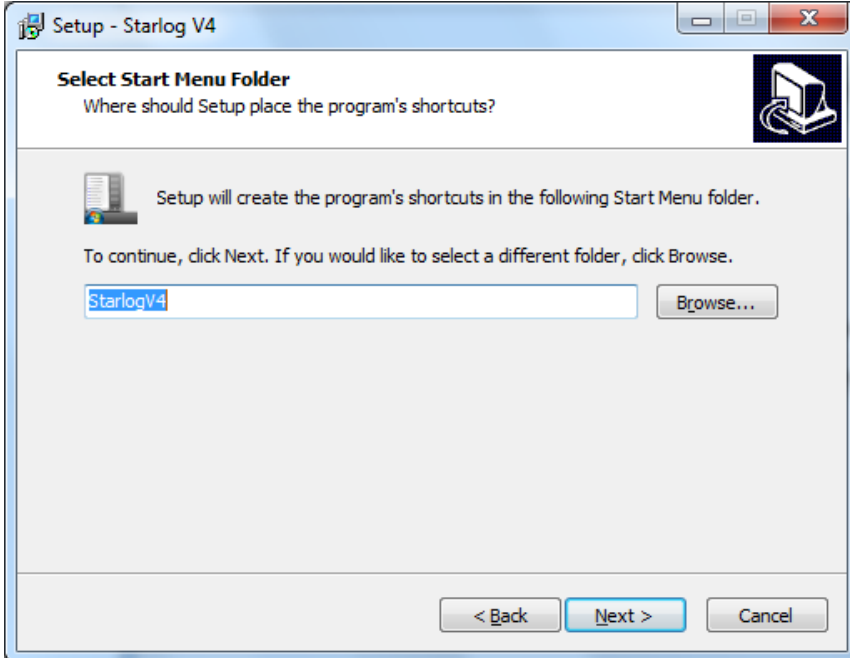
Close all other programs currently running on the computer and then press “Next”



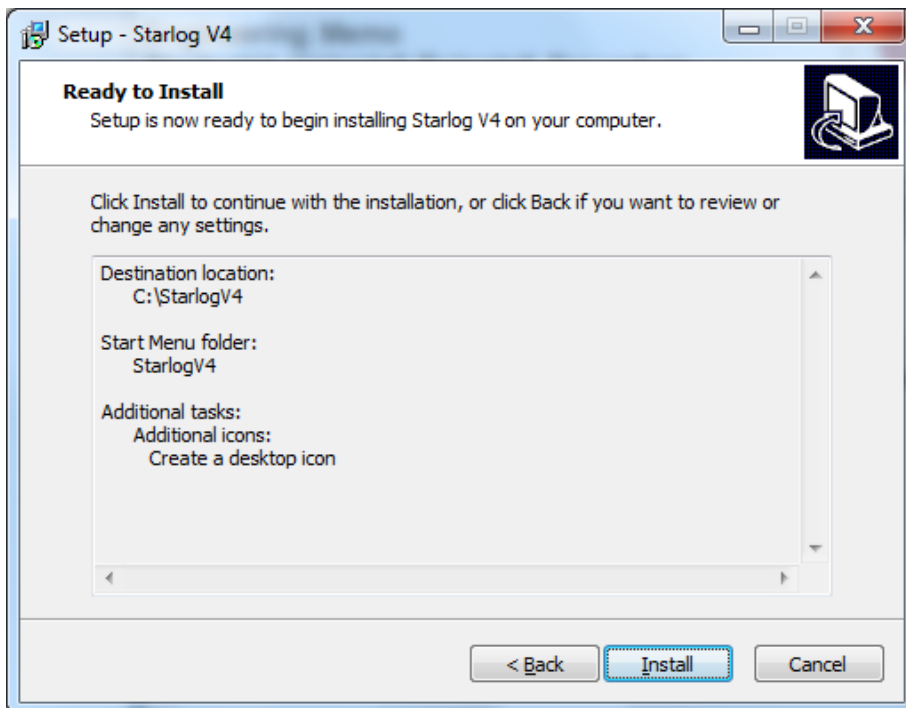
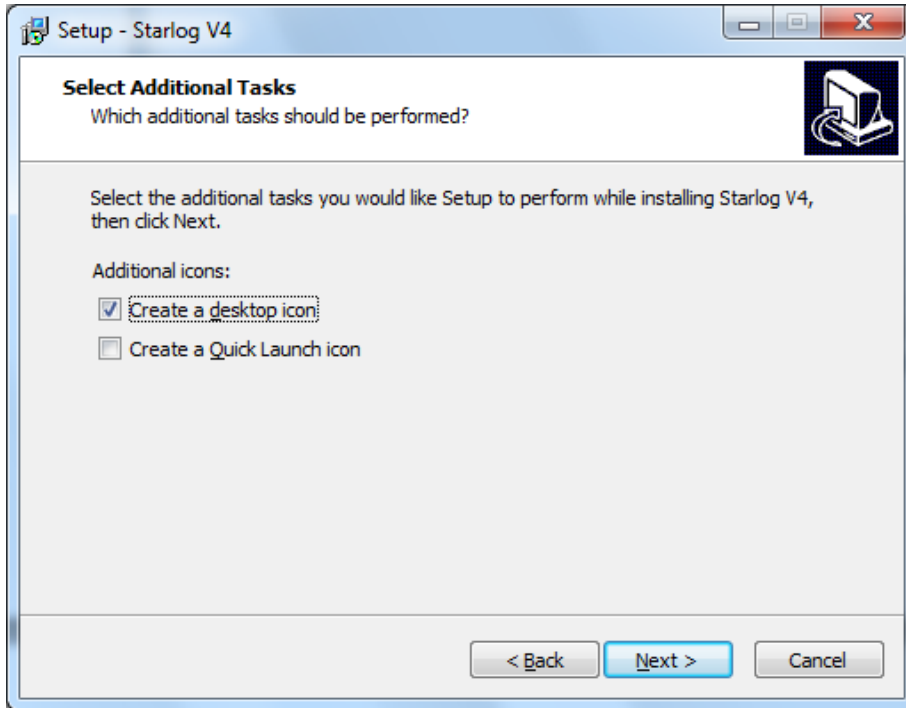
Click on “I accept the agreement” and press “Next”



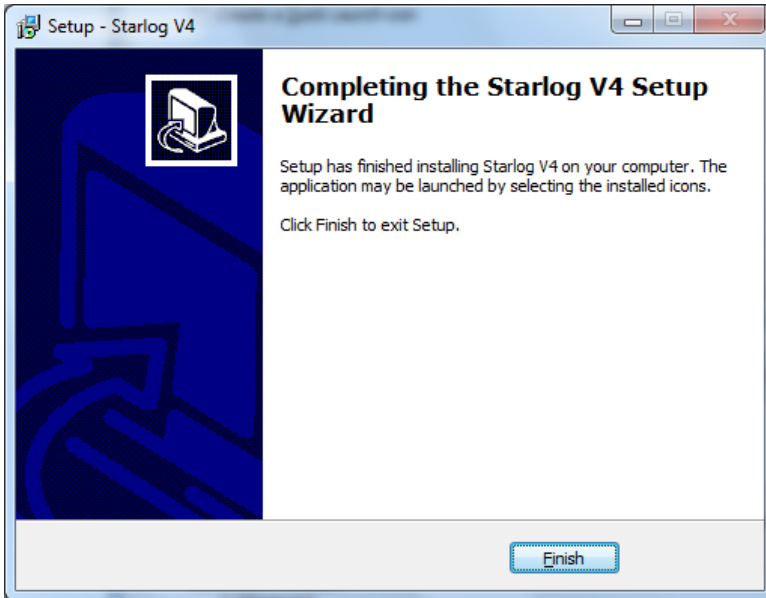
Do **NOT** change the path. StarlogV4 needs to be at this location. Do **NOT** install into “Program Files” folder. If you do this StarlogV4 will not run correctly!



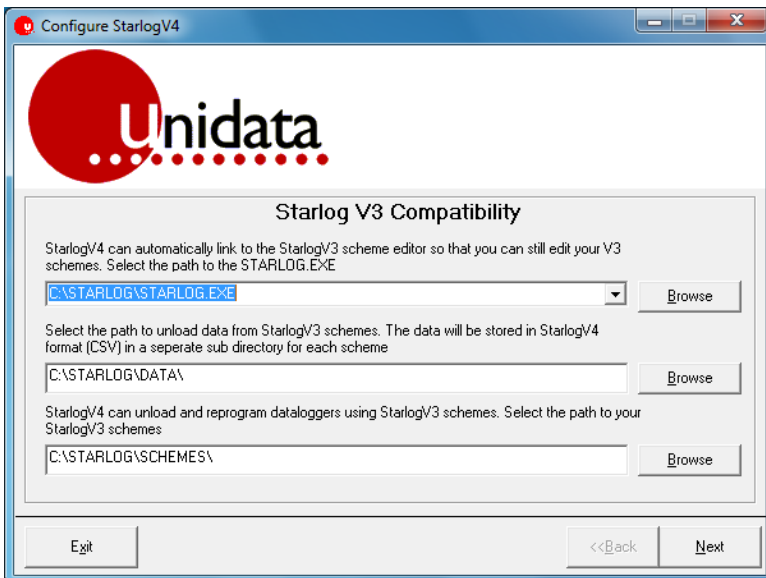
Select program shortcuts as required.



Press the “Install” button once you have selected your start icon options.

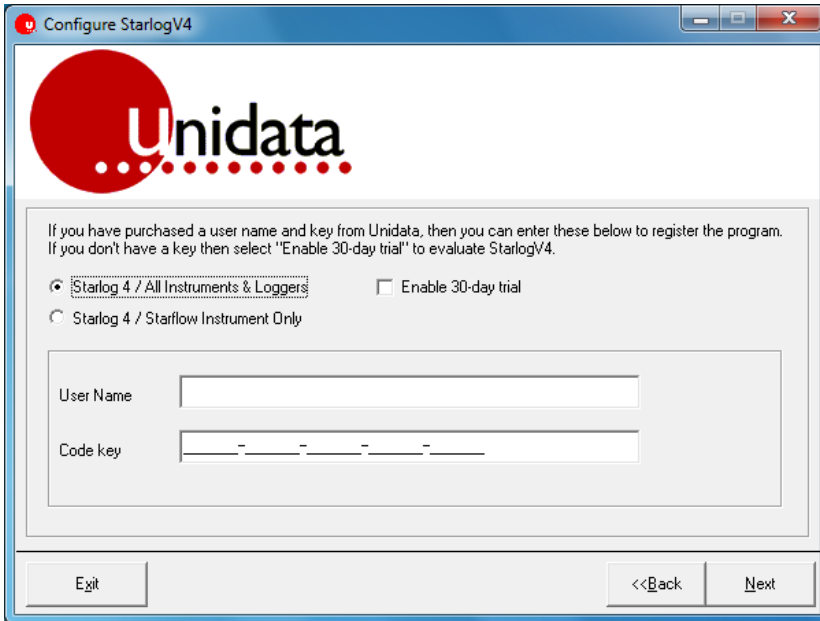


Click “Finish” once the installation has completed.



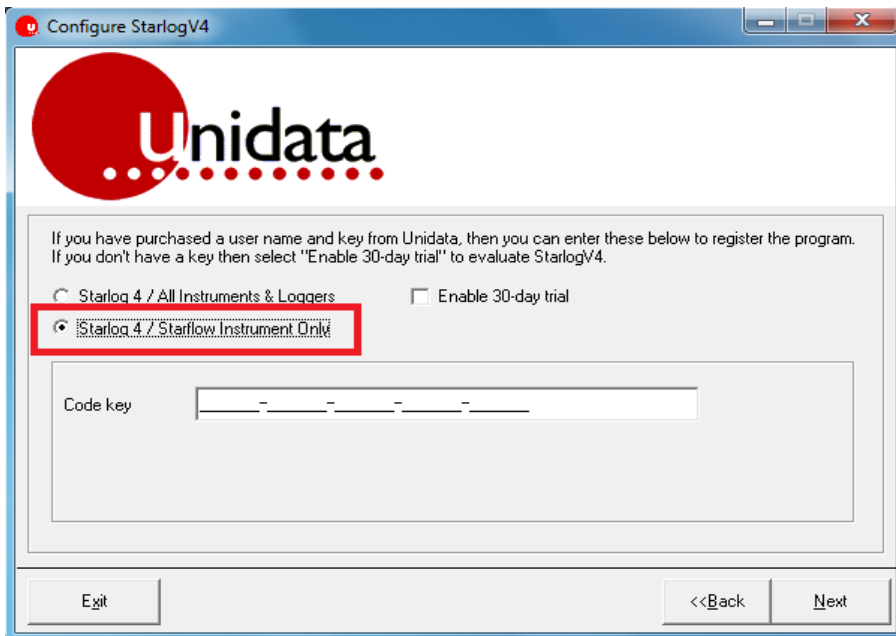
When the software is run for the first time, Starlog will ask you for the path of any Legacy Starlog Version 3 files. If you have not got Starlog Version 3 on your PC then just press “Next” to progress to the next step.

If you do have Starlog Version 3 files on your PC then you can set up the paths in the above window. Once this has been done, press the “Next” button



This screen allows you to install one of the following:

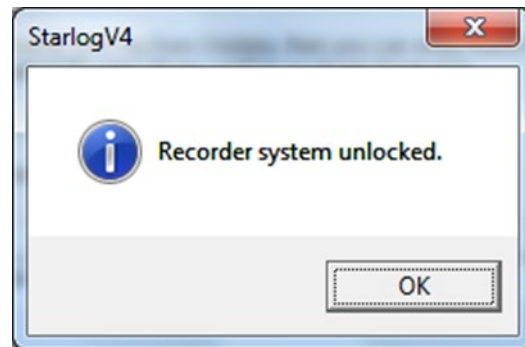
- Starlog 4 / Starflow Instrument only
- Starlog 4 / All Instruments and Loggers (Full version, additional User Name and code key required – purchased separately)



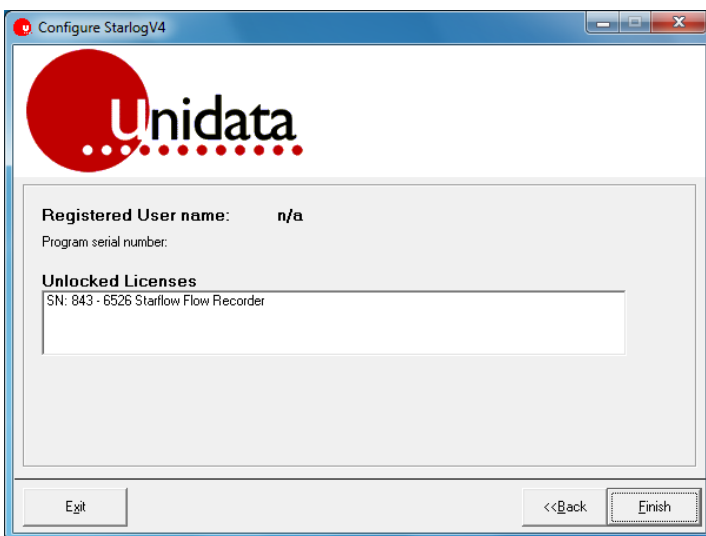
Because this installation will be for the “Starflow Instrument Only” (Supplied free with the purchase of a Starflow Instrument) then you will need to select “Starlog 4 / Starflow Instrument Only” option as indicated with the red highlight above.



Now continue by entering your Code Key into the window. The Code Key can be located on the “Unidata Recorder Software for Starflow” disk that came packaged with your Starflow instrument. Press “Next” when done.



Once the Code Key has been successfully entered, you will get a confirmation window as shown above. Press “OK”

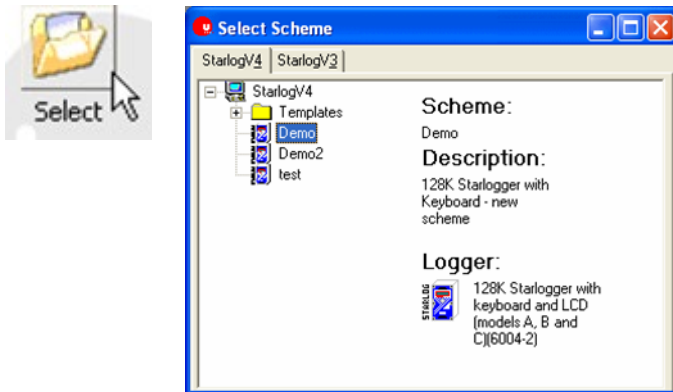


You will now see a window confirming the registration of the product and will also indicate a Software Serial No.

This completes the installation of the Starlog 4 Starflow instrument only software onto your PC.

## 6.0 STARFLOW SCHEME MANAGEMENT

To select existing scheme open StarlogV4, click on Select icon and created schemes will be displayed. The tabs at the top allow you to view all your version 4 schemes and all your version 3 schemes (if you have any). Select a scheme by double-click its name



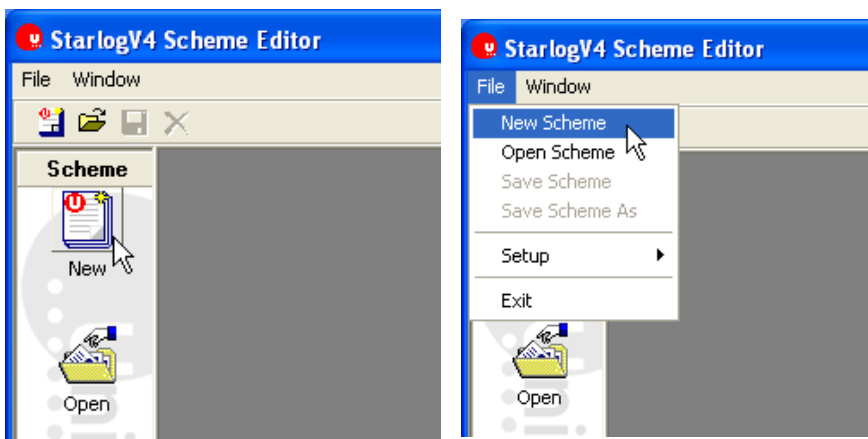
### 6.1 Scheme Editor

To create a scheme, you need to open the Scheme Editor. Click on the **Scheme Editor** icon in the main window.

Note: Version 4 software cannot edit version 3 schemes. You must keep a copy of version 3 software installed if you want to edit your old schemes.

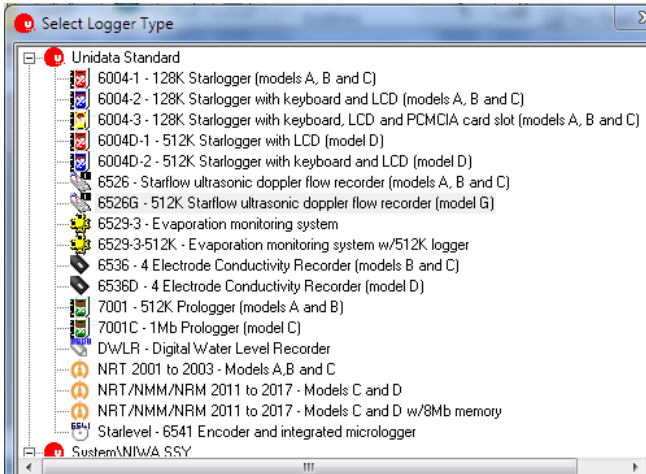


When the Scheme Editor is open, select New Scheme from the File menu, or click the New icon on either of the toolbars.





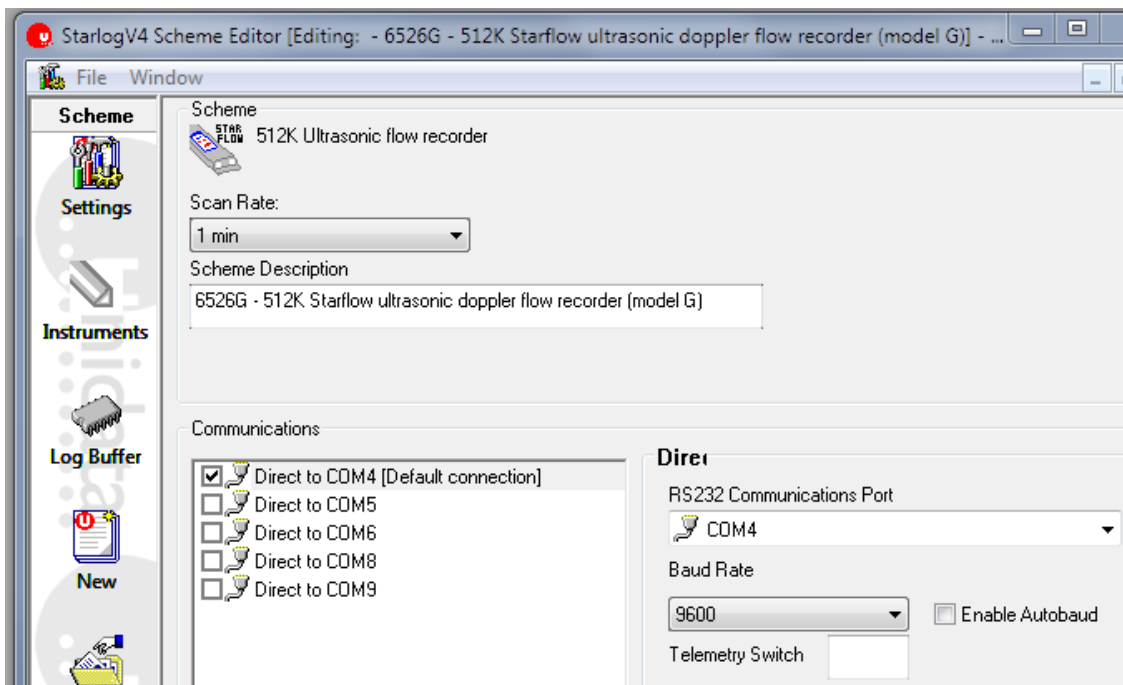
A list of data loggers will appear. Select the 6526 – Starflow ultrasonic Doppler flow recorder by double-clicking it.



Three new icons will appear inside the left toolbar: **Settings**, **Instruments**, and **Log Buffer**.

### 6.1.1 Settings

To control basic logger functionality click on the Settings icon:



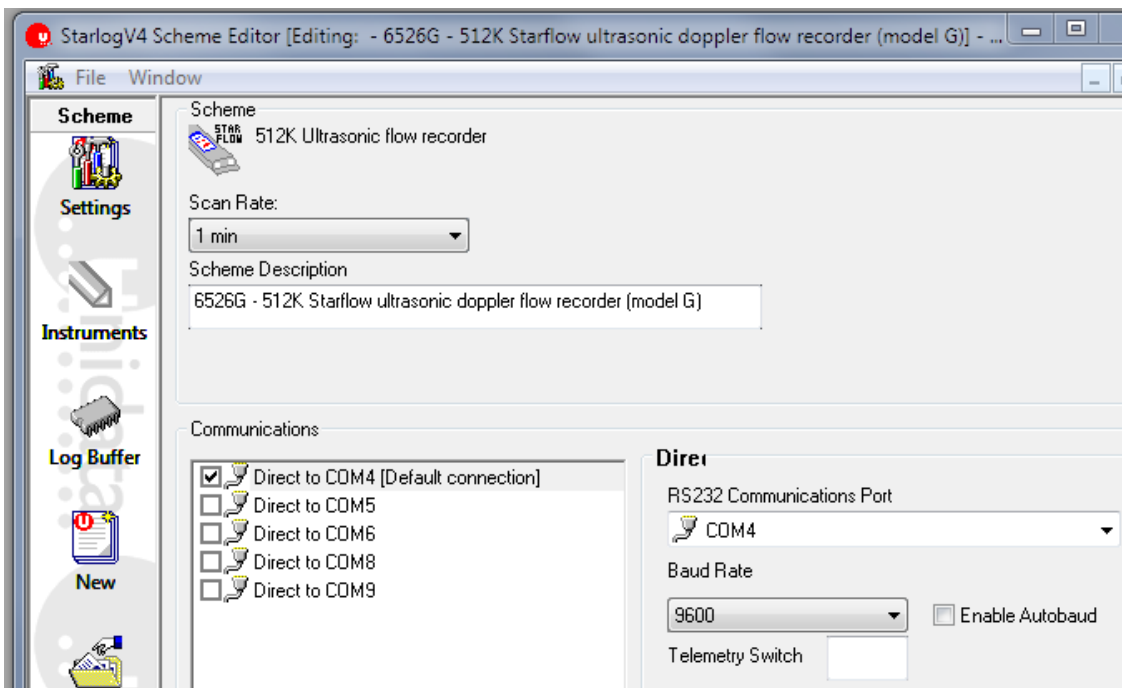
One of the most important settings is the **Scan Rate**. This defines how often the logger scans (samples) its inputs. Faster scan rates make it more likely the data logger will capture accurate minimum and maximum, but will shorten the battery life.

The scan rate also influences averaging. If you want to log average data every 15 minutes, then a 5 second scan rate implies  $15\text{min} \times 60\text{sec} \div 5 = 180$  samples. If you don't need that many samples, you could increase the scan rate to maximize battery life.

Another limit the scan rate imposes is on the maximum logging interval. The maximum log interval is 65535 times the scan rate. For example, if you set the scan rate to 1 second, the maximum logging interval is 65535 seconds, or 18 hours 12 minutes 15 seconds. If you want a log interval of 1 day, you would need a scan rate of at least 2 seconds.

The **Scheme Description** should be set to something that will assist you in remember what the scheme is for.

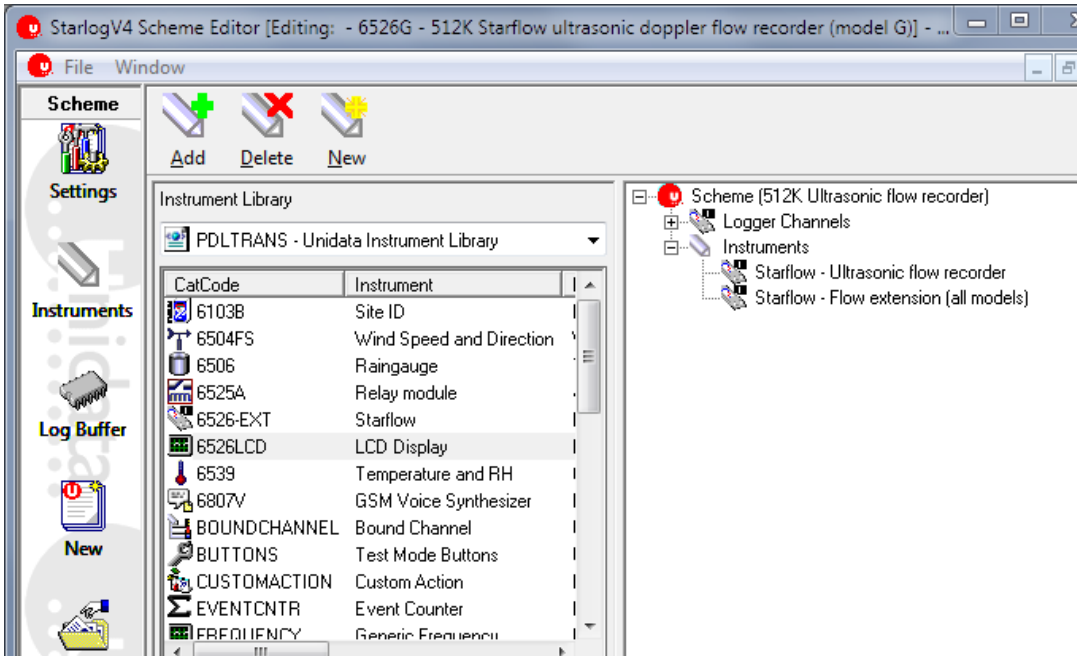
Apart from the **Scan Rate**, the **Communication** settings are the next most critical. If they're wrong, you won't be able to program or unload your logger!



The Instruments window lets you define what instruments are connected to the logger. Instruments define the relationship between what the logger measures (voltages, pulses/counts, digital data) and what the instrument measures (temperature, depth, wind speed, etc).

### 6.1.2 Instruments

Click on the **Instruments** icon



The **Instrument Library** lets you select from major groups of instruments.

When you select an Instrument Library, all the instruments in the library relevant to the selected logger are shown. The right half of the Instruments window shows the instruments that have been added to your scheme you will now see for the Starflow:

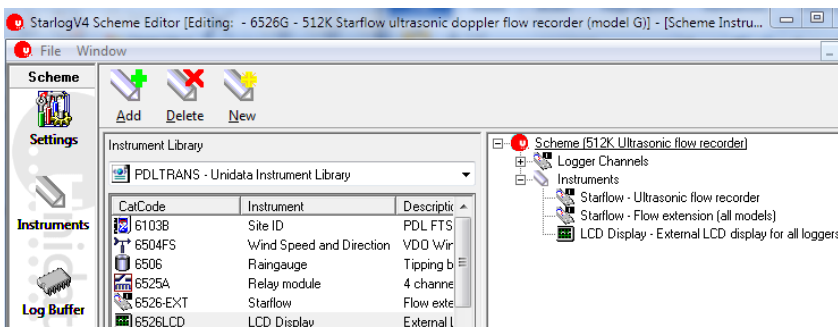
Starflow – Ultrasonic flow recorder

Starflow – Flow extension (all models)

To **add an instrument** to your scheme, either double-click on its line in the left half of the window, or select it then click the **Add** button at the top of the window. A copy of the instrument will be added to the list in the right half of the window.

For example, to add the Starflow LCD Module instrument to your scheme:

1. Select 6526LCD LCD Display
2. Click the **Add** button to add the instrument to the scheme.

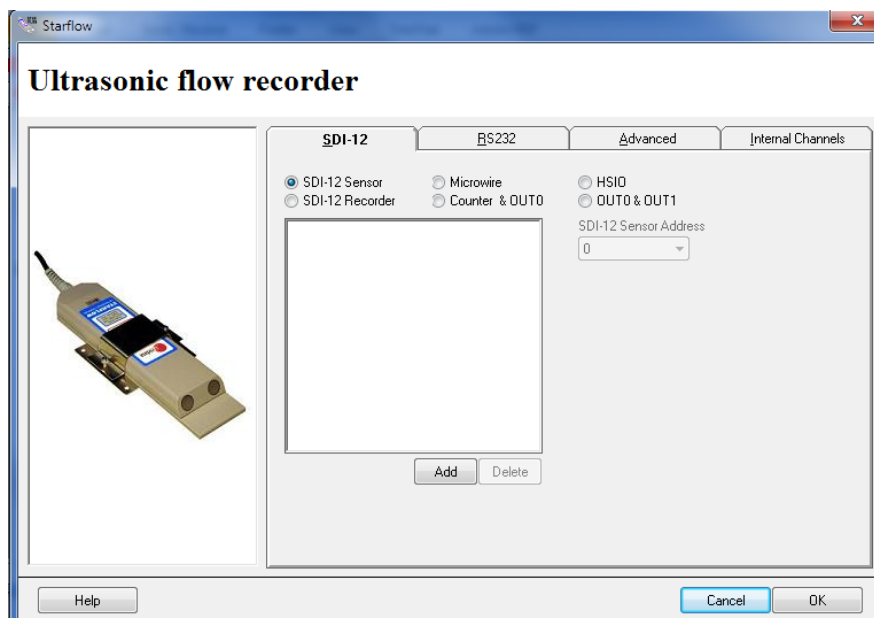


To **remove an instrument** from your scheme, select it from the list in the right half of the instrument window and click the **Delete** button at the top of the window, or right-click on it and select **Delete** from the menu.

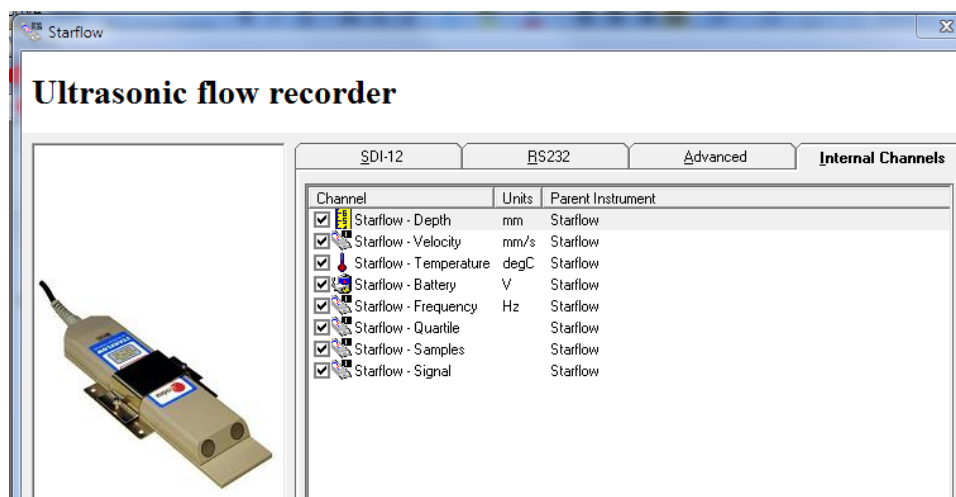
To **configure an instrument**, double-click on its line in the right half of the window, or right-click on it and select **Edit** from the menu. Different instruments have different configuration windows and options.

### 6.1.2.1 Configuring the Starflow

Starflows are configured just as if they were a regular instrument. When you create a scheme, an instrument for the Starflow is always added as the first instrument. Double click on Starflow – Ultrasonic flow recorder:



The various tabs show the options available. If you want internal logger channels to be available for logging (e.g. Depth Velocity, Temperature, Battery, Quartile, Samples), you will need to make sure their entries on the **Internal Channels** tab are ticked:



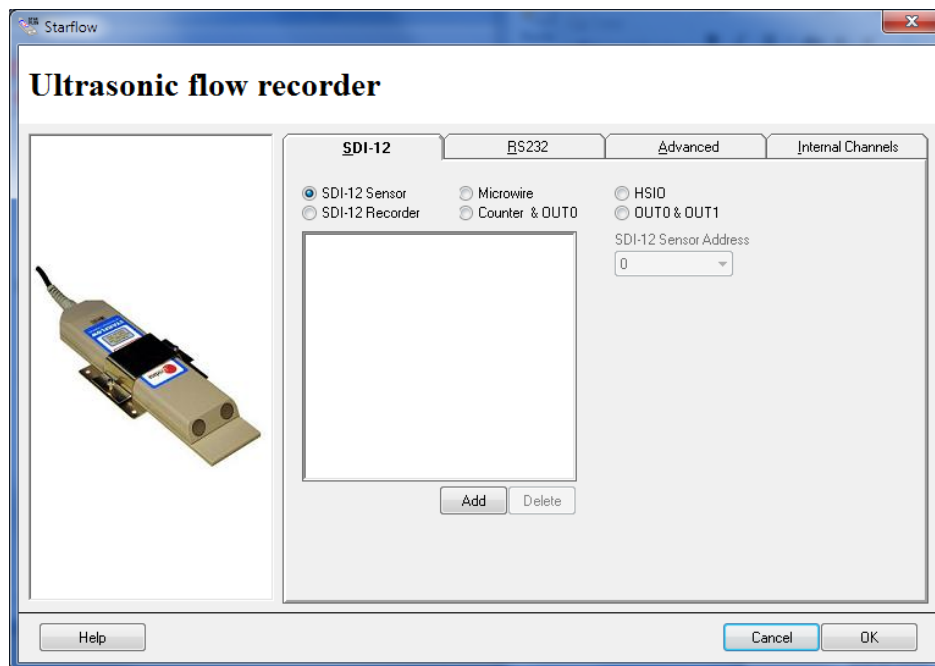
Please note that Starflow is not “plug and play” type of instrument.

To get most accurate and reliable information relevant for you installation you will need, in a way, to “calibrate” Starflow. That’s why it is always recommended that initially, Frequency, Quartile, Samples and Signal are ticked in the internal channels TAB. This selection will slightly increase power consumption but it will provide valuable information for the “calibration” of the Starflow. Later, when all parameters are set accurately these channels can be unselected.

### 6.1.2.2 Configuring the Starflow as an SDI-12 Sensor

When the Starflow is an SDI-12 sensor, other SDI-12 recorders can access and log data sensed by it. This can be useful if you have something with a limited number of inputs, such as a Starflow, but would prefer to have all data at a site logged by a single logger. You could configure the Starflow as an SDI-12 sensor, and use a Starlogger as an SDI-12 recorder to log the depth/velocity/flow from the Starflow, as well as whatever other instruments you have (e.g. wind speed/direction, air temperature, rainfall).

To set a Starflow up as an SDI-12 sensor, first add any required instruments to it. Then open the Starflow instrument and select the **SDI-12** tab. Tick **SDI-12 Sensor** to enable the controls.

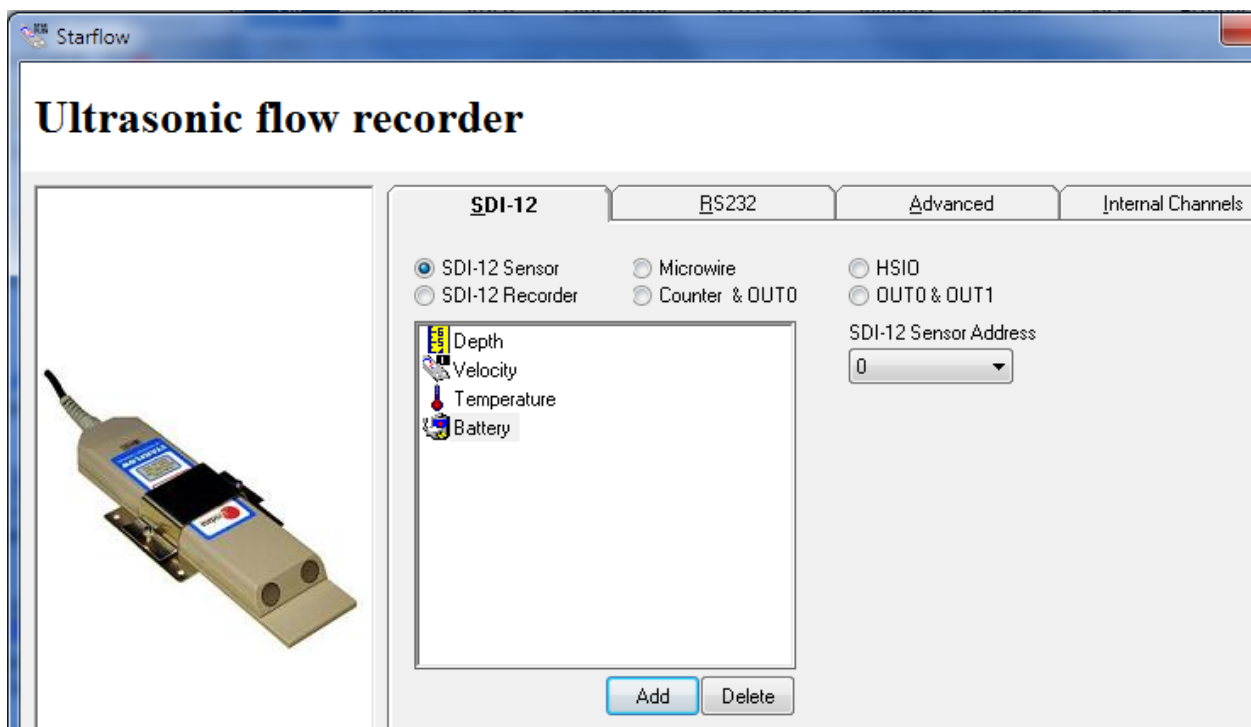


Select ADD and for each channel you want to make available as an SDI-12 reading:

Channel	Units	Parent Instrument
Starflow - Depth	mm	Starflow
Starflow - Velocity	mm/s	Starflow
Starflow - Temperature	degC	Starflow
Starflow - Battery	V	Starflow
Starflow - Frequency	Hz	Starflow
Starflow - Quartile		Starflow
Starflow - Samples		Starflow
Starflow - Signal		Starflow
Starflow - Area	cm <sup>2</sup>	Starflow
Starflow - Flow Rate	l/s	Starflow
Starflow - Flow	l	Starflow
Starflow - Total Flow	l	Starflow

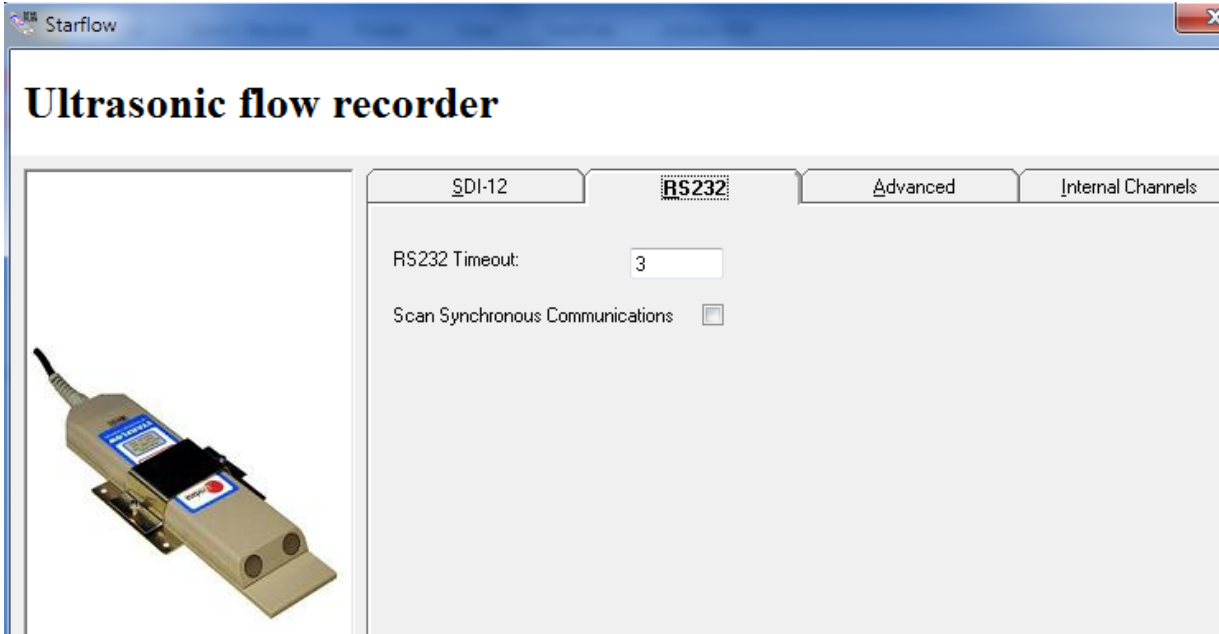
Double-click on a channel to add it to the list. Each added channel becomes an SDI-12 value, numbered from zero starting at the top. The following shows “Depth” as parameter 0, and “Velocity” as parameter 1

The Starflow MUST then be programmed with this new scheme to operate as an SDI-12 sensor.



### 6.1.2.3 Configuring the Starflow RS232/UPS

Select the **RS232** tab.

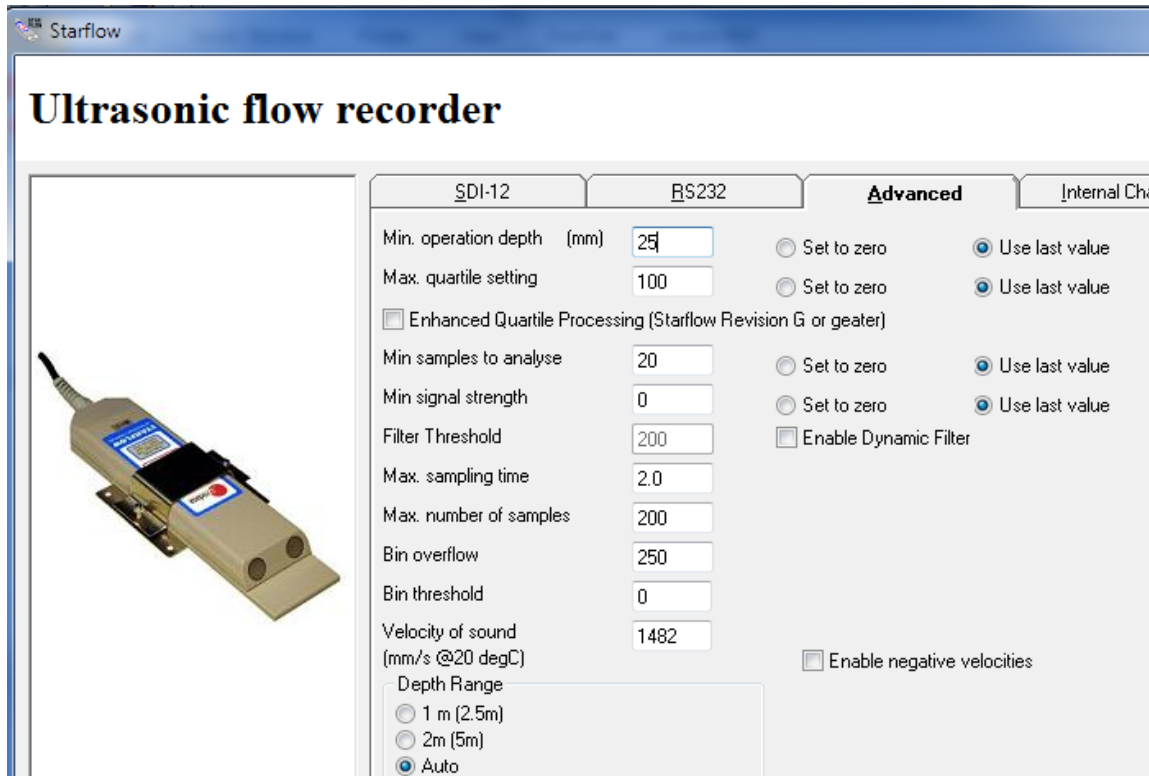


The **RS232 Timeout** controls how long the logger will remain powered on and ready to communicate at each scan interval. The factory default for most loggers is 1 second, which is adequate for direct serial cable connections. However, if communications is to take place via a modem, then this should be extended to 3-5 seconds (or more, as required). Longer timeouts will lead to increased power consumption while the logger is communicating.

The **Scan Synchronous Communications** checkbox fine-tunes when the logger checks for a computer attempting to communicate with it. When this checkbox is ticked, the logger will wait until the end of a scan before checking to see if there is a computer wanting to communicate with it. When this checkbox is not ticked, the logger does not wait. After this first check, the logger will only check that the computer is still connected at the end of each scan, regardless of the setting of this checkbox. For quick scan rates, this setting does not do much, however, for slower scan rates, clearing this checkbox (to select asynchronous communication) may improve the logger's responsiveness to communications.

### 6.1.2.4 Configuring the Starflow Advanced options

The advanced option TAB contains very important factors which are used to interpret the Starflow data. The table below shows the default settings set by the software for general flow operation:



Options likely to be configured:

**Min operating Depth:** The Starflow minimum operating depth is set to 25mm this is the minimum depth which is required in order for the Starflow to operate in the correct manner.

**Max Quartile Setting:** The quartile setting is used to determine how accurate the data being reported is and if the Starflow is picking up good signals or bad signals, if a quartile higher than 100 is generated this generally says that the data being recorded is unreliable.

**Min Samples to analyse:** The Starflow requires a certain number of samples to determine if the data being provided is accurate, the default setting is 20 and this is recommended, if there is less than this then the data could be widely spread causing inaccuracies in reported data.

**Max number of samples:** This setting allows the Starflow to receive a certain number of samples during a scan rate period, in general the more samples the better as then your range of velocity samples becomes more accurate, in general circumstance 200 samples is enough for good data quality but in poor flow areas this should be increased to 500.

**Set to zero or use last value:** If one of the CDT criteria is not met (e.g. quartile > 100 or Min samples to analyse < 20 ) then the software will either record a zero or the last value obtained, in general flow conditions and for data quality a zero is usually advised.

The other factors are factory defaults and should not be changed.

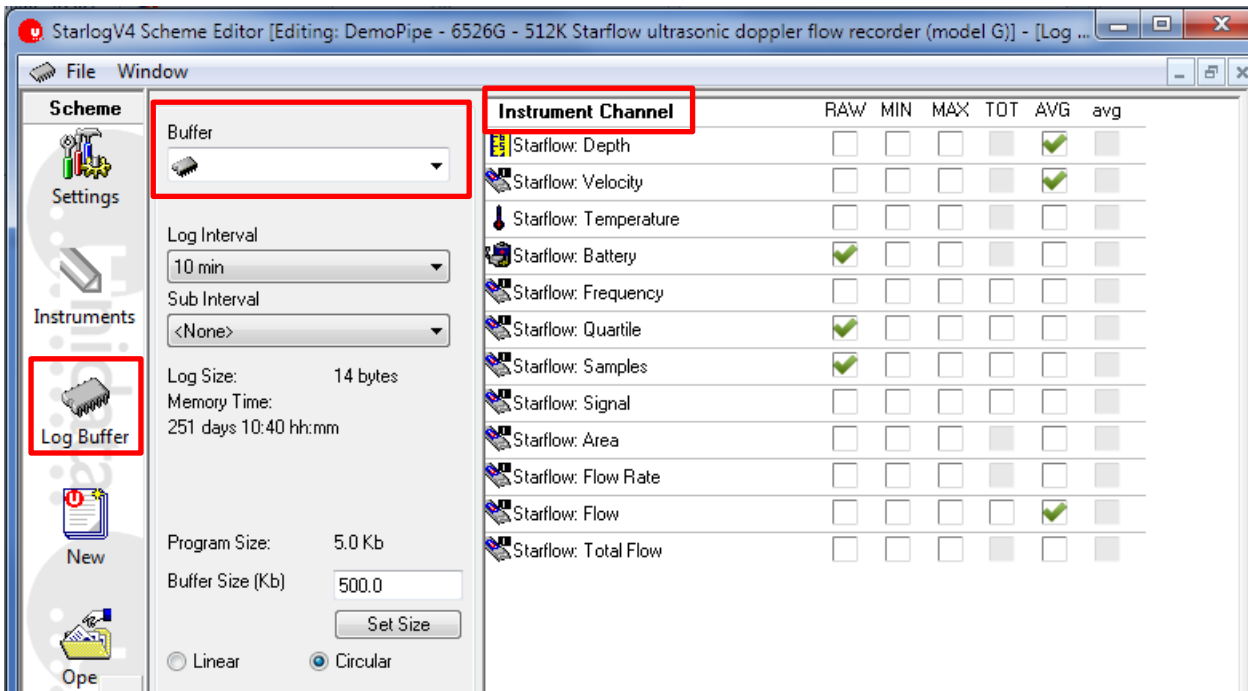


### 6.1.3 Log Buffer

#### 6.1.3.1 Buffer

Open the Log Buffer window by clicking on the Log Buffer icon.

The Log Buffer window is where you set up the logger memory for recording data by selecting what to log and how often to log it. Data loggers have one Main Buffer and multiple Event Buffers. Event Buffers tend to be small and are used to store data logged on an ad-hoc basis. Whatever memory is not allocated to Event Buffers is allocated to the Main Buffer. Since Event Buffers default to zero bytes, the default Main Buffer size is all the available memory.



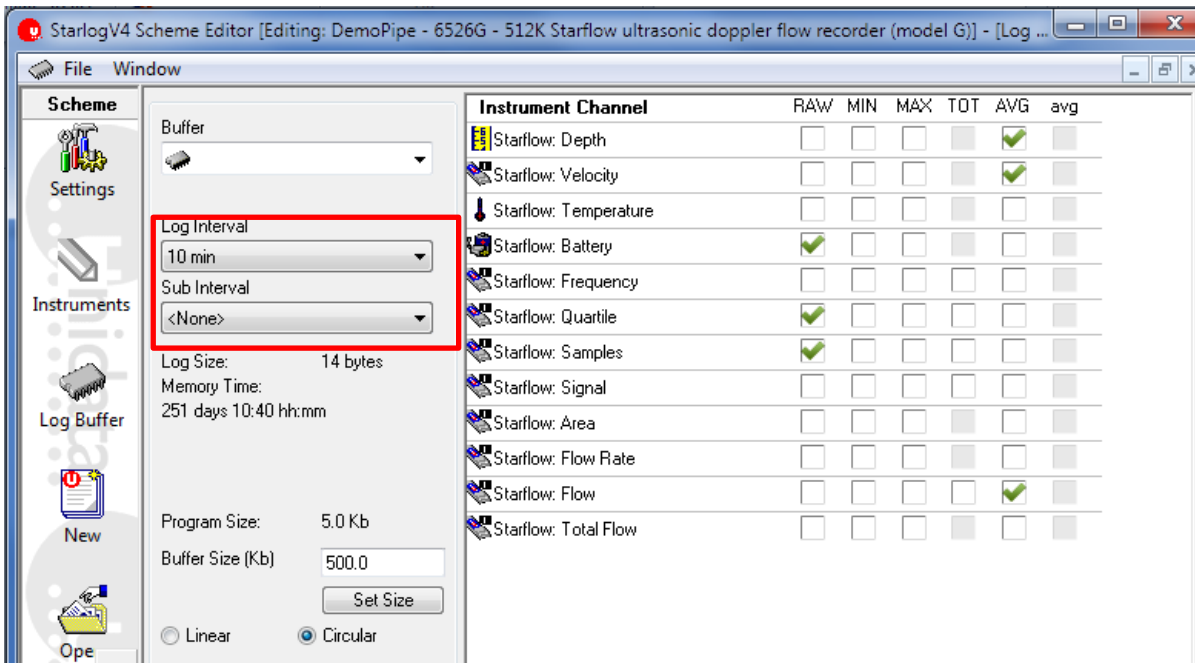
#### 6.1.3.2 Instrument Channels

Each Buffer has its own set of the Instrument Channel checkboxes. You control which of the available channels gets logged into each buffer. The following channel logging options are available; however, some instrument channels may not support all of them (for example, temperature cannot be totalised)

Option	Description
RAW	The instantaneous value of the channel at the time of the log.
MIN	The minimum of the values sampled at each scan over the <b>log interval</b>
MAX	The maximum of the values sampled at each scan over the <b>log interval</b>
TOT	The total of the values sampled at each scan over the <b>log interval</b>
AVG	The average (arithmetic mean) of the values sampled at each scan over the <b>log interval</b>
avg	The average (arithmetic mean) of the values sampled at each scan over the <b>sub interval</b>

### 6.1.3.3 Log Intervals

The Log Interval is the time between logs. Only the Main Buffer has a Log Interval setting. Event Buffers do not have a Log Interval because logging into them is always triggered by events. At each log, all the Instrument Channels ticked will be recorded into the Log Buffer. In the screenshot below, the raw internal Battery will be logged every 10 minutes.



The maximum log interval is limited by the scan rate. The maximum log interval is 65535 times the scan rate. For example, if you set the scan rate to 1 second, the maximum logging interval is 65535 seconds, or 18 hours 12 minutes 15 seconds. If you want a log interval of 1 day, you would need a scan rate of at least 2 seconds.

### 6.1.3.4 Sub Intervals

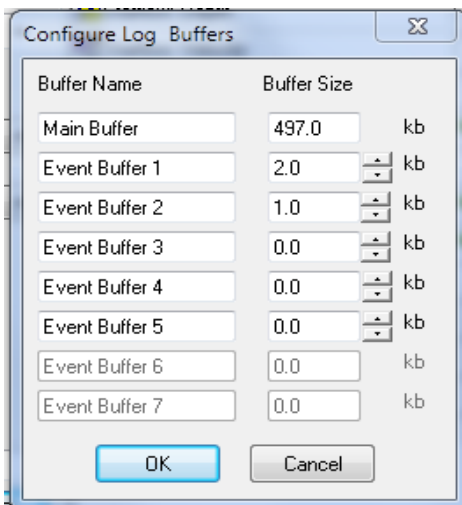
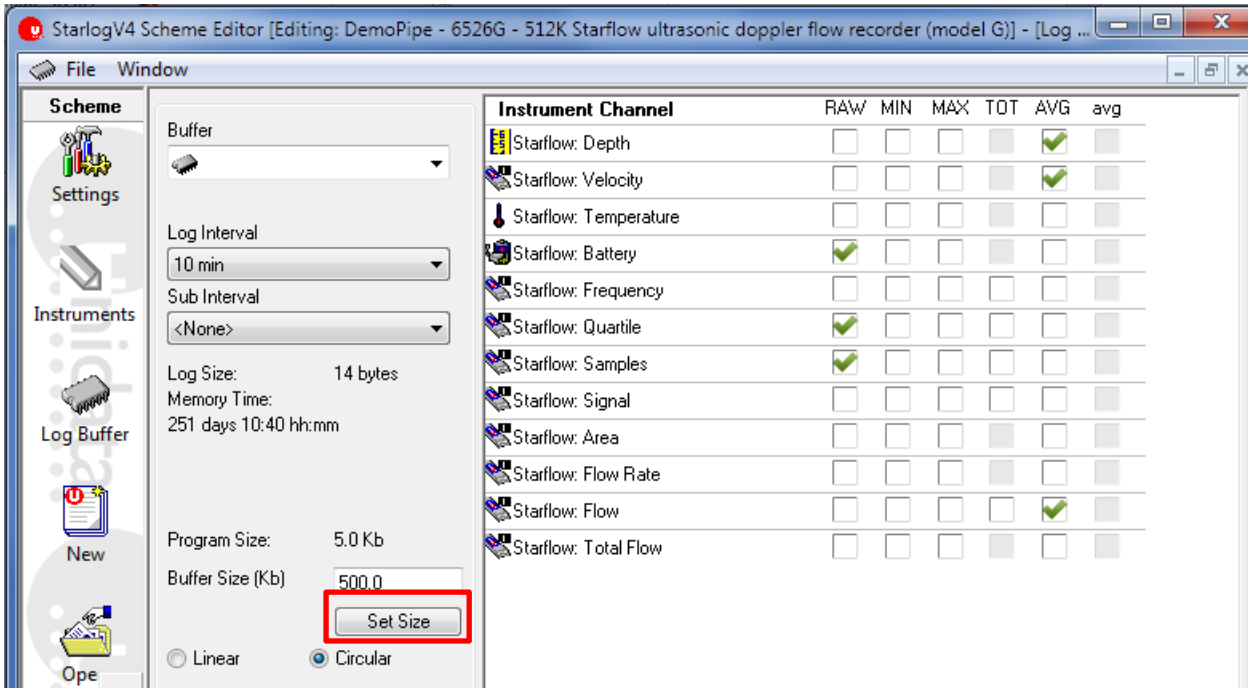
The Sub Interval setting only relates to the “avg” column of Instrument Channel checkboxes (not the “AVG” column, or any other column). Rather than take samples at each scan like the “AVG” column, the “avg” column only takes samples during the Sub Interval. The Sub Interval is always the time immediately before a Log. Event Buffers do not support the Log Interval or Sub Interval settings.

For example, if the Log Interval is 60 seconds, and the Sub Interval is 20 seconds, for the first 40 seconds of the 60 second log cycle only the “MIN”, “MAX”, and “AVG” channels will take samples. For the remaining 20 seconds before the log occurs (the Sub Interval), all channels, including the “avg” channel, will be taking samples.

### 6.1.3.5 Buffer Sizes

Event Buffers must have their size manually allocated. The Main Buffer size equals to whatever memory is left after memory has been allocated to the Event Buffers. Click the **Set Size** button to configure the buffers.

As you tick channels to log, or adjust the Log Interval, the software will automatically update the Memory Time to show you an estimate for how long the memory will last. The estimate does not take into account logging forced by events.

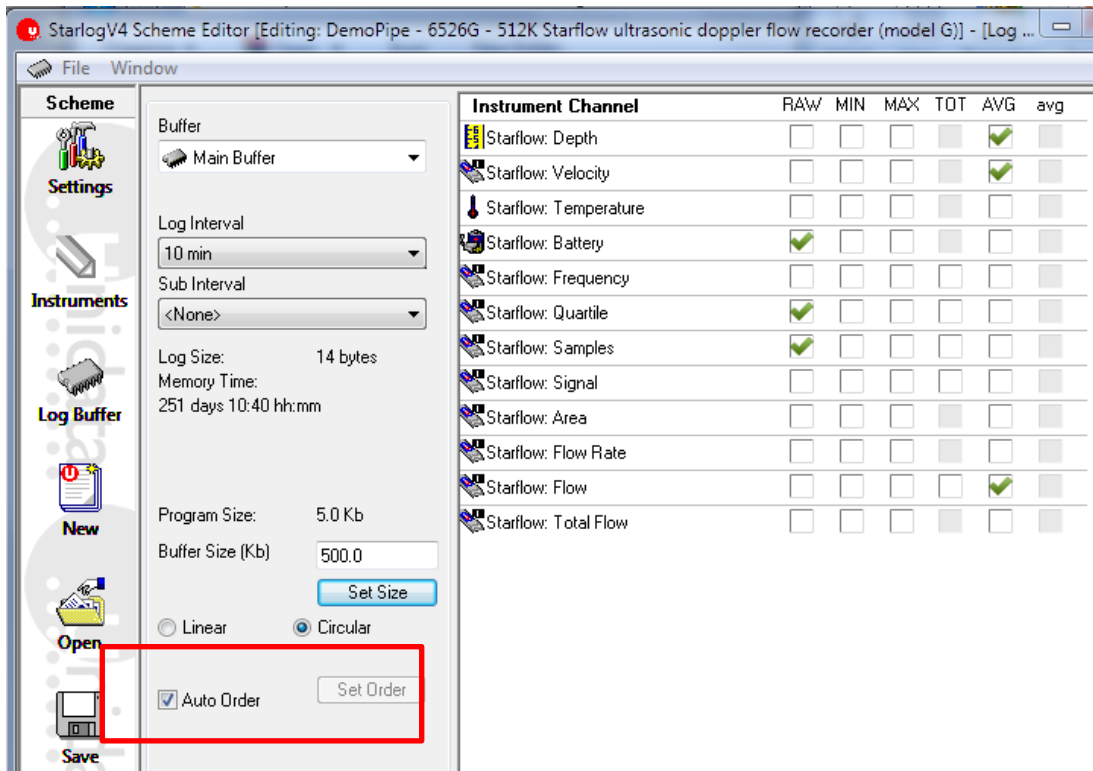


You can adjust the sizes of the Event Buffers in 1KB increments by clicking on the small up/down buttons to the right of the Event Buffer Size field. Increasing the size of an Event Buffer will decrease the size of the Main Buffer by a corresponding amount, and vice versa.

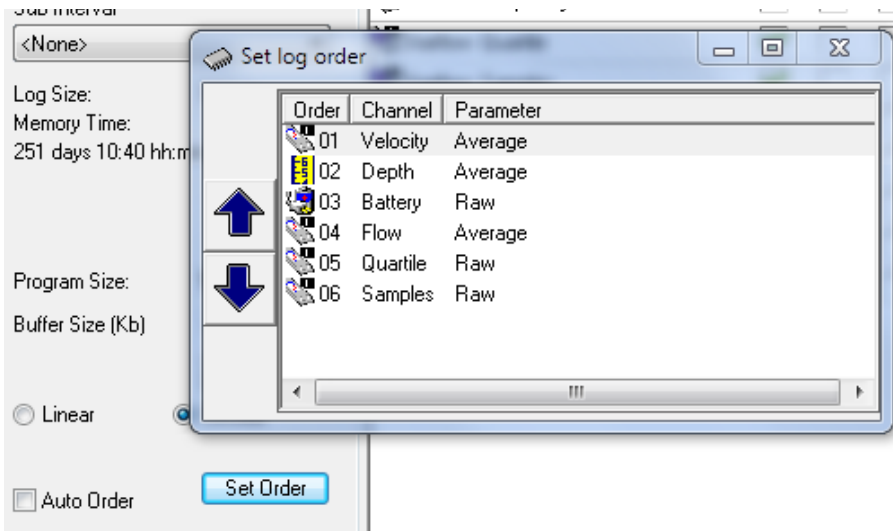
Note that the total capacity of all the buffers will always be less than the quoted memory capacity of your data logger. The data logger reserves some memory for the scheme program, working variables, communications buffers and configuration data.

Settings common to all buffers are:

**Linear / Circular:** When linear buffers fill up, they stop accepting new logged data. When Circular buffers full up, they wrap around to the beginning and start overwriting the oldest data.



**Instrument Channel Ordering:** This defaults to Auto Order, however, you can un-tick the checkbox and click on the Set Order button to manually set the logging order of the channels:

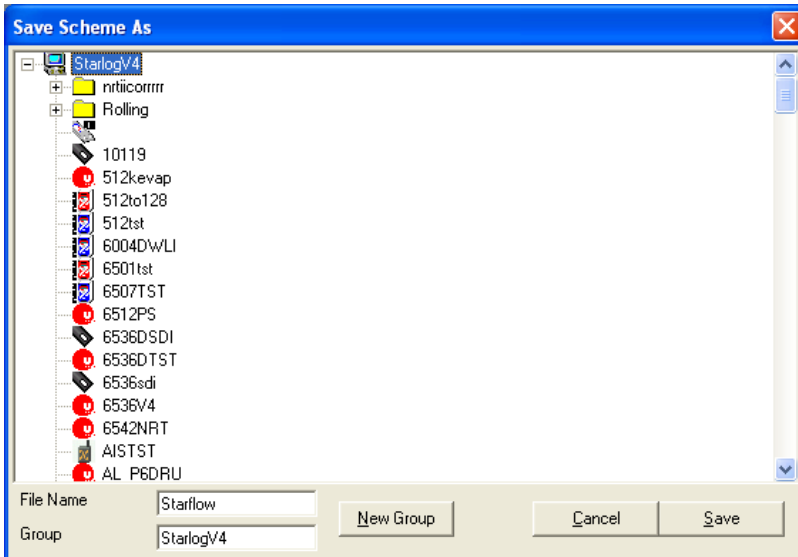


Click on the channel to select it, and then click on the up/down buttons on the left to nudge it up/down the list.

### 6.1.4 Events

Events allow the logger to act on changes on its inputs. Various actions include triggered logging, SMS alerts and relay control. A maximum of 32 events are supported.

### 6.1.5 Saving the Scheme



To save your scheme, click the **Save** icon.

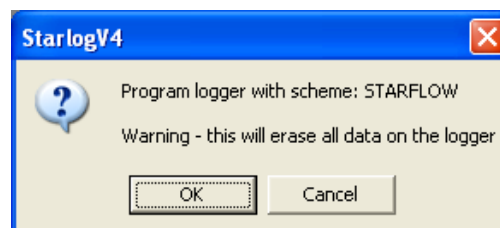
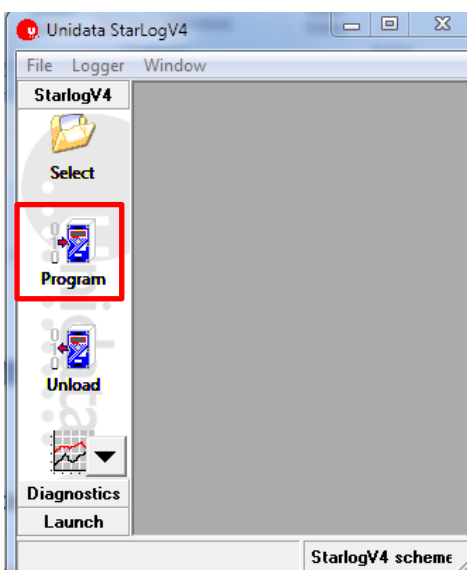
If you've saved your scheme before it will immediately save. If you've never saved the scheme before, the dialog shown below will appear. You can get the same dialog at any time by selecting **Save Scheme As** from the **File** menu.

Enter the scheme name in the **File Name** field. There is a maximum length of eight characters.

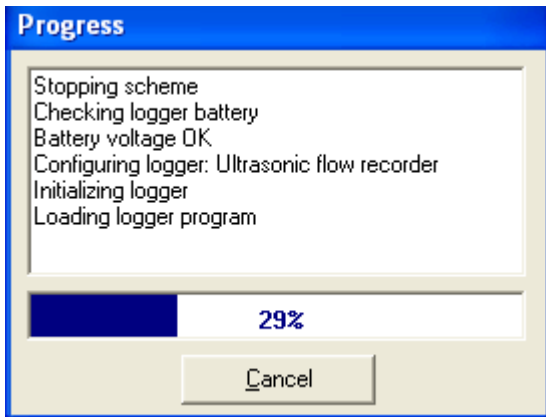
The **New Group** button allows you to create sub-folders of schemes. Groups may be created inside groups, too.

## 7.0 PROGRAMMING STARFLOW

Loggers are programmed from the main screen, by clicking on the Program icon, shown to the right. You will be asked to confirm before the programming will proceed:



Clicking **OK** will open a new window that shows the progress of the programming:



If all goes well, a **Logger successfully re-programmed** message will appear (with **Disconnected** as the final message). Click **OK** to close the progress window.

If any errors are detected and reported on the computer screen, you may then correct them and Program Starflow again. Error messages are:

Error	Correction
Timeout on Prompt	Check that the cable is connected to the right communication port.
	Check that this port you are using is selected in the Communications window for this Scheme.
	Consult the computer's documentation to verify the port's designation.
Timeout on Output	Communications errors. Starflow not responding to request. Could be caused by a program running on your computer in the background. Check connections, halt other programs running on your computer, then try again.
Timeout on Input	
Logger will have powered down	
Extended error x	Error configuring Starflow. Write down the number, check connections, then try again. If unsuccessful, contact your nearest support center.
Hex byte expected	Transmission errors. Non-fatal informative errors indicating a communication error has been detected. Check cabling or Modem's telecommunications line. The transmission is automatically retried and the system will proceed normally.
Bad Checksum	
<CR> expected	
Verify error	
File not found	Save the Scheme again (this generates files needed), or re-install Starflow Software.
Firmware insufficient	The Hardware chosen for the Scheme doesn't match Starflow. Re-create the Scheme using the correct Starflow model.
Modem Reports – No Carrier	The remote Modem not answering. Check phone number. Check that remote Modem is functioning.
Modem Reports – Busy	The remote Modem is off the hook. Wait, then try again.
Modem Reports – No Dial Tone	The Modem is not connected to the phone socket. Connect, then try again.

## 8.0 TEST MODE

Test Mode is used to check the status of the logger, and to monitor its logging progress.

To enter Test Mode, click on its icon (shown to the right). A window similar to following will appear:



the

The **Scheme Name** shows the name of the scheme that has been programmed into the logger. If the scheme in the logger isn't the same as the currently selected scheme, the following message will be displayed:



You should select the named scheme (in this case “Starflow”) and load its Test Display. The Test Mode window is divided into four sections:

1. Scheme Information
2. Log Information
3. Scheme Channels
4. Log Buffers

Each of these items is explained in detail below.

## 8.1 Scheme Information

Scheme Information	
Scheme Name:	6526H_F
Logger Time:	14/12/2015 2:57:50 PM
Logger State:	Logging
Scan Rate:	5 s

The Scheme Information section has the following items:

- **Scheme Name:** The name of the scheme programmed into the logger.
- **Logger Time:** The date/time of the logger.
- **Logger State:** One of **Primed**, **Logging**, or **Stopped**:

**Primed:** The logger hasn’t yet started logging. Loggers with no built-in instruments (excluding internal battery and temperature sensors) will not start logging until three scans have passed since a plug was connected to their “Input Signals” connector.

**Logging:** The logging is sampling and recording data.

**Stopped:** The logger is not recording. This may be because the inputs have been unplugged, or the logger Main Buffer has filled

- **Scan Rate:** The time between consecutive samples of the inputs.

Note: In this Test mode you can also increase the font to a larger size by pressing the (+) sign on your keypad; this is especially useful for field situations.

## 8.2 Log Information

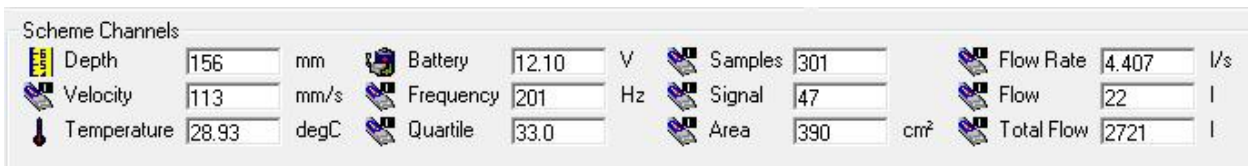
Log Information	
Log Rate:	5 s
Log Size:	16 bytes
First Log:	14/12/2015 2:47:40 PM
Last Log:	14/12/2015 2:57:50 PM
Memory Expires on:	16/12/2015 10:58:40 AM (2 days 20:00 hh:mm)
Memory Usage:	<input type="text" value="1.9 of 497.1 Kb"/>



The Log Information section has the following items:

- **Log Rate:** This is the time between consecutive logs.
- **Log Size:** This is the size of each log entry in the Main Buffer in bytes.
- **First Log:** This is the date/time when the first log was recorded.
- **Last Log:** This is the date/time when the most recent log was recorded.
- **Memory Time:** This is the estimated time remaining until the Main Buffer fills up and either stops (Linear) or starts overwriting the oldest data (Circular). The Main Buffer free space is shown in square brackets after the time.

### 8.3 Scheme Channels



The Scheme Channels interface displays the following readings:

- Depth: 156 mm
- Velocity: 113 mm/s
- Temperature: 28.93 degC
- Battery: 12.10 V
- Frequency: 201 Hz
- Quartile: 33.0
- Samples: 301
- Signal: 47
- Area: 390 cm<sup>2</sup>
- Flow Rate: 4.407 l/s
- Flow: 22 l
- Total Flow: 2721 l

The Scheme Channels display the current readings of the instruments connected to the logger.

### 8.4 Log Buffers

The Log Buffers are displayed across the bottom half of the window. The Main Buffer plus any Event Buffers are each given their own tab. Click on the tab to select the buffer to view.

Main Buffer								
Time	Depth(RAW)	Velocity(RAW)	Temperature(RAW)	Battery(RAW)	Frequency(RAW)	Quartile(RAW)	Samples(RAW)	Signal(RAW)
14/12/2015 2:56:15 PM	155	120	28.60	12.10	214	32.0	332	51
14/12/2015 2:56:20 PM	156	119	28.60	12.10	212	35.0	322	48
14/12/2015 2:56:25 PM	155	111	28.60	12.10	198	42.0	277	48
14/12/2015 2:56:30 PM	155	122	28.66	12.10	218	41.0	315	45
14/12/2015 2:56:35 PM	154	116	28.66	12.10	206	35.0	316	48
14/12/2015 2:56:40 PM	156	129	28.66	12.10	229	34.0	352	45
14/12/2015 2:56:45 PM	155	124	28.66	12.10	221	34.0	312	45
14/12/2015 2:56:50 PM	155	122	28.73	12.10	217	37.0	323	48
14/12/2015 2:56:55 PM	156	114	28.73	12.10	202	38.0	292	48
14/12/2015 2:57:00 PM	155	117	28.73	12.10	208	37.0	317	48
14/12/2015 2:57:05 PM	156	114	28.73	12.10	203	37.0	307	46
14/12/2015 2:57:10 PM	156	119	28.80	12.10	211	34.0	326	50
14/12/2015 2:57:15 PM	155	124	28.80	12.10	221	31.0	350	48
14/12/2015 2:57:20 PM	156	115	28.80	12.10	204	37.0	317	46
14/12/2015 2:57:25 PM	155	117	28.80	12.10	209	32.0	300	51
14/12/2015 2:57:30 PM	154	120	28.80	12.10	213	39.0	313	45
14/12/2015 2:57:35 PM	153	130	28.86	12.10	231	32.0	369	44
14/12/2015 2:57:40 PM	154	117	28.86	12.10	209	33.0	316	50
14/12/2015 2:57:45 PM	155	106	28.86	12.10	188	36.0	287	51
14/12/2015 2:57:50 PM	157	111	28.86	12.10	197	35.0	315	51

StarlogV4 scheme: 6526H\_F - 6526H Flow Test      COM3:9600,8,N,1

Each buffer viewer operates in one of two modes:

- **Table:** This displays the logged data in tabular form.
- **Graph:** This display the logged data in a graphical form as a line plot of data.  
Each logged item forms a series and each can be individually turned on and off.

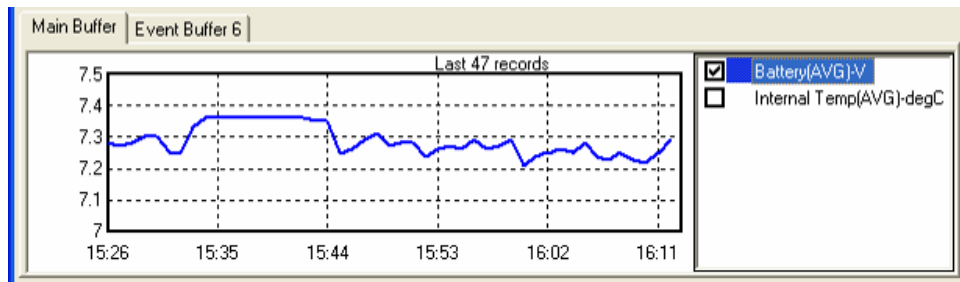
#### 8.4.1 Log Buffer Table View

This is the default Log Buffer view. Each column is a different logged data item. Each row is a log record. To change to the Graph view, right-click anywhere over the table data and select **Graph** from the menu.

To change the number of log records shown, right-click anywhere over the table data and select the required number of records from the **View** sub-menu. The data selected is always from the most recently logged records. Since 100 records is the largest number available, data logged more than 100 records ago cannot be viewed in Test Mode. You will have to unload the logger to see older data.

#### 8.4.2 Log Buffer Graph View

The Graph View displays the logged data in the form of a series line plot. Each logged item forms a different series. The time of log is the X-axis, the Y-axis is the value of the logged items.



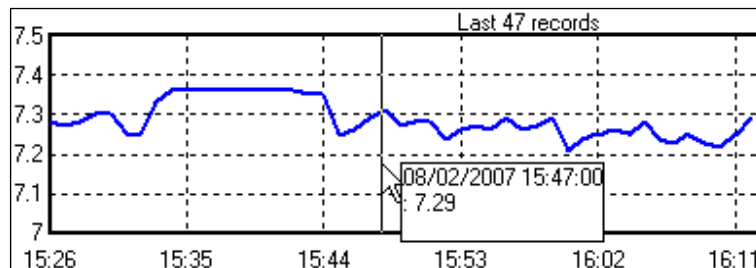
To change to the Table view, right-click anywhere **outside** the plot area (either of the axes or the **Last N records** title) and select **Table** from the menu.

To change the number of log records shown, right-click anywhere **outside** the plot area (either of the axes or the **Last N records** title) and select the required number of records from the **View** sub-menu. The data selected is always from the most recently logged records. Since 100 records is the largest number available, data logged more than 100 records ago cannot be viewed in Test Mode. You will have to unload the logger to see older data.

To adjust which data series are plotted, either use the checkboxes to the right of the plot area, or right-click in the plot area and select/deselect the series from the **Filter** sub-menu.

To see the specific value at a point on the graph, move the mouse over the graph and line up the vertical line that moves with the mouse pointer over the point of the graph that you're interested in. After a short delay a popup tooltip will appear showing the date/time and value of the data at that position.

The following shows that at 08/02/2007 15:47:00 a value of 7.29 was logged:



Note that the mouse doesn't have to be on the plotted line – any position vertically above or below, but inside the graph area, will work.

## 9.0 UNLOADING DATA FROM LOGGERS

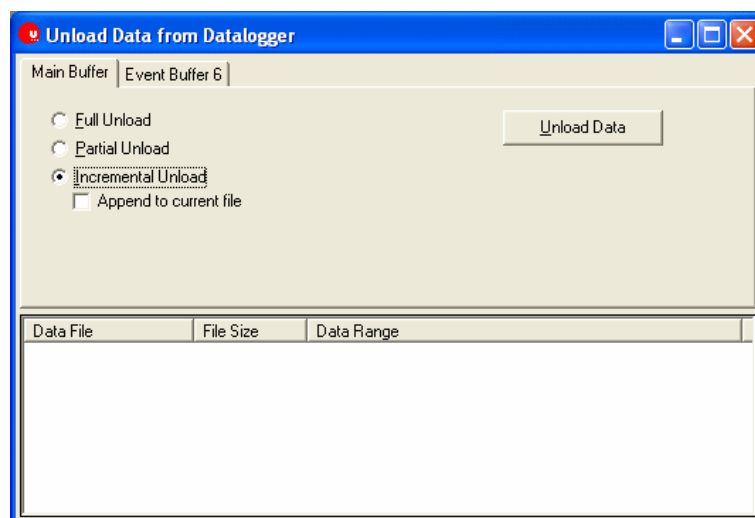
Once you've had your logger operating for a while, it will have recorded some data. Unloading is the action of copying the data stored in the data logger into a CSV (comma separated value) file on your computer.

CSV files can be directly opened in Excel, and are also a common format supported by other software such as Tideda and Hydsys.

Unloaded CSV data files are stored in a scheme sub-folder of the folder specified by the **Data Path** option for Version 4 schemes

**NOTE:** Version 4 software can only produce CSV files, it cannot generate Version 3 compatible \*.Unn files.

To unload logged data from your data logger to your PC, click on the **Unload** icon (shown to the right). The following window will appear:



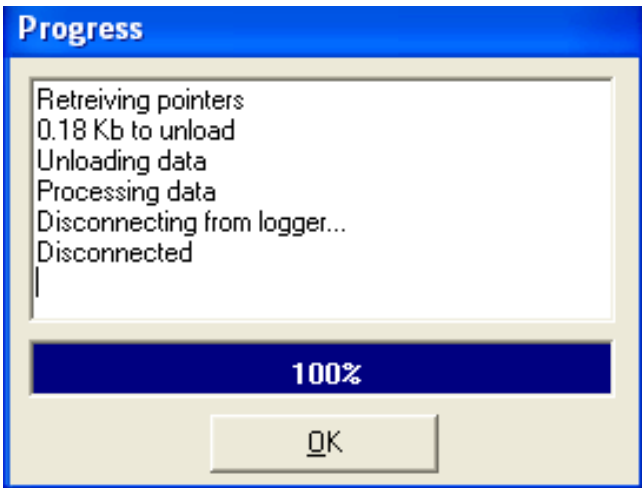
If your scheme has defined multiple buffers, you must unload each one in turn. There are three options for downloading each buffer:

**Full Unload:** This unloads all the data available on the logger into a new CSV file.

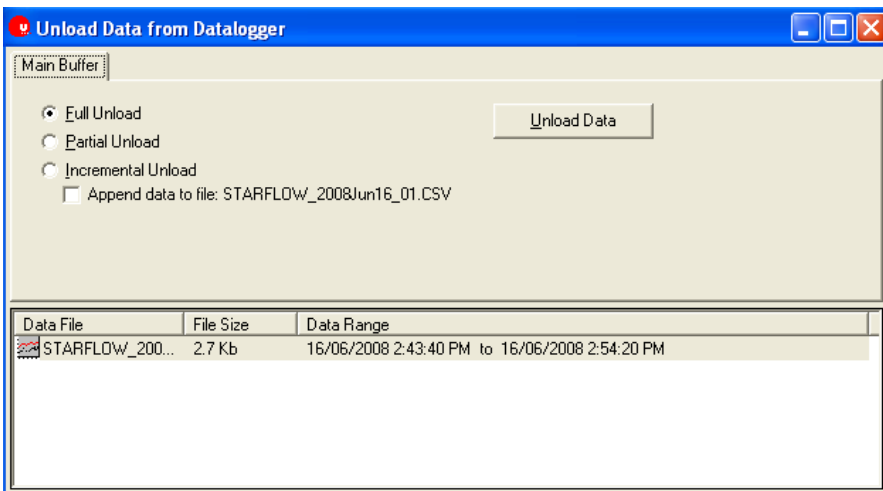
**Partial Unload:** For fixed log interval buffers, this unloads all the data between two dates into a new CSV file. For event-based buffers, this unloads a selectable number of log records, starting at the most recent.

**Incremental Unload:** This unloads all data logged since the last time you unloaded the logger. If you've never unloaded the logger since you programmed it, this will be a Full Unload. Tick the **Append to current file** checkbox if you want the data to be appended to the most recently unloaded data, otherwise the data will be stored in a new file.

When you have selected the unload method you want, click the Unload Data button. A window will appear showing you the progress of the unload:



When complete, the newly unloaded data will be added to the list of files:

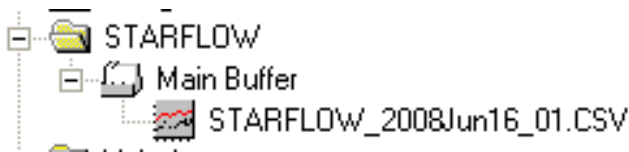


You can view a CSV file by double-clicking on it in the list. See Viewing Data on page 41 for a complete description of viewing logged data.

## 10.0 VIEWING DATA

Starlog V4 is not data processing software. We recommend that you use Tideda, Hydsys, or Magpie to process data. The data viewer is for functional testing only.

To view data that you have previously unloaded, click the **View Data** icon (shown to the right). The following window will appear:



Initially, only the **Source Data File** tab is available. This is where you select the data you want to view.

### 10.1 Source Data File

Before selecting the file to view, you must first select the type of data you want to view. There are four supported types:

**StarlogV4 (\*.CSV):** Version 4 data files generated by version 4 software from version 4 schemes.

**StarlogV3 (\*.CSV):** Version 4 data files generated by version 4 software from version 3 schemes.

**StarlogV3 (\*.Ann):** Version 3 data files generated by version 3 software.

**Archive (\*.CSV):** Arbitrary CSV files.

**NOTE:** Version 4 cannot directly view Version 3 unload files. Before you can view Version 3 data, you must create \*.Ann files for each \*.Unn file using an ASCII report created in the Version 3 Report Editor.

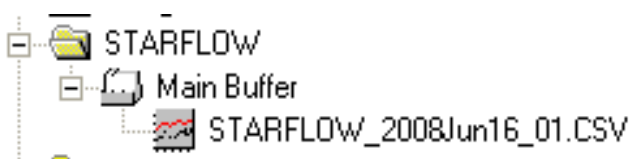
Selecting the type of data will change the tree of available files in the bottom of the window.

The first line of the window will show the folder that Starlog V4 is looking in for data files. In the sample screenshot above Starlog V4 is looking under **C:\Program Files\StarlogV4\DATA**.

#### 10.1.1 Starlog V4 (\*.CSV) Files

These files are grouped by scheme, each scheme will have one or more buffers, and each buffer will have its own set of logged data files.

The following screenshot shows that there is a scheme called **Starflow**, which has available data from its **Main Buffer**, and the only data file available is a file called **Demo\_01.CSV**.



### 10.1.2 Archive (\*.CSV) Files

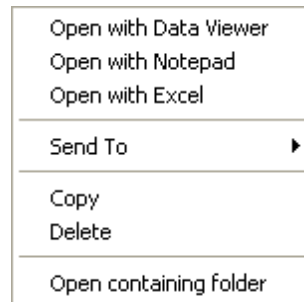
These are whatever CSV files Starlog V4 can find in the specified folder. CSV files to be viewed in the Data Viewer have some formatting requirements:

- The first line in the file assigns a name to each column consisting of the channel name and the logging method (raw, average, etc).
- The second line in the file assigns the units to each column (mm, degC, etc).
- The third line and beyond is the unloaded data.

### 10.2 Viewing the Data File

Once you've located the data file you want to view, there are a number of ways to open it:

Double-click on it to open it using the Starlog V4 built-in Data Viewer  
Right-click on it to open a context menu:



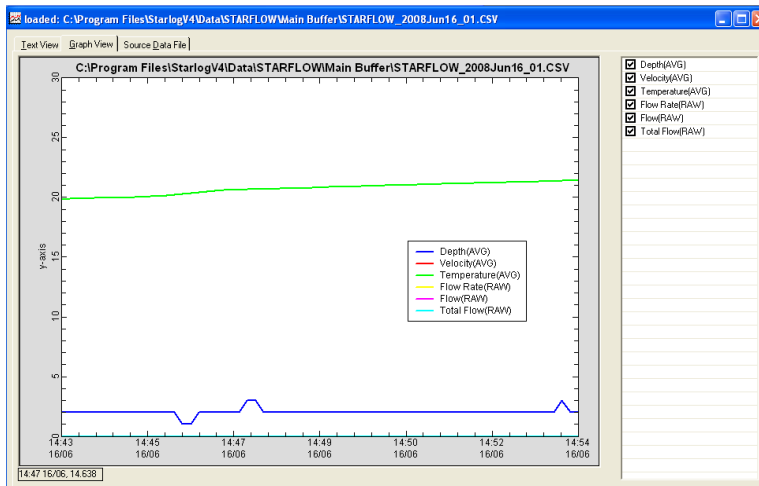
The "Open with" options are described below. The Send To, Copy, Delete, and Open containing folder are all handled exactly the same as when you right-click on a file in the standard Windows file Explorer.

#### 10.2.1.1 Graph View

The default mode for viewing your data is the **Graph View**. This shows a zoomable graph on the left and individually selectable channels on the right. Untick or tick channels to hide or show them. The legend may be moved by dragging it to a new position.

The graph is zoomable by clicking and dragging out the rectangular area you want to zoom in to. Reset the zoom by right-clicking on the graph. The zoom level is also reset when you make a change to the visibility of any channel.

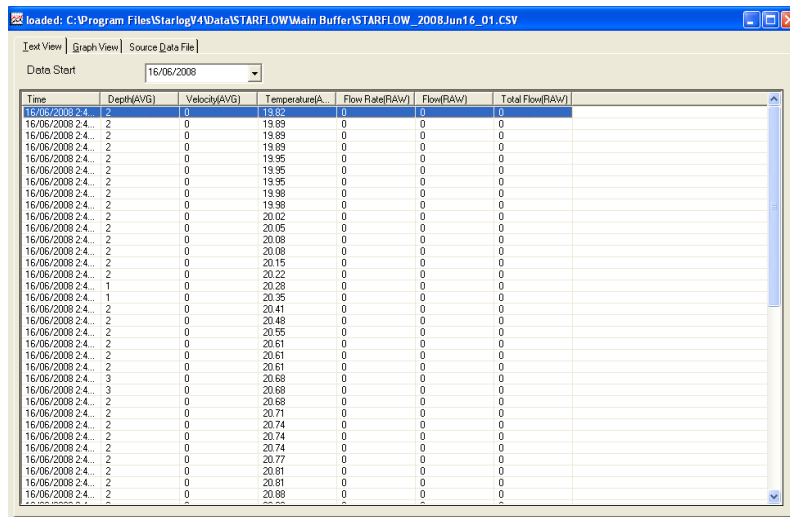
The example below has the Battery channel turned off, leaving the Internal Temp:



When you hover your mouse over the graph, the time of log of the data you're hovering is shown at the bottom left, next to the scrollbar.

### 10.2.1.2 Text View

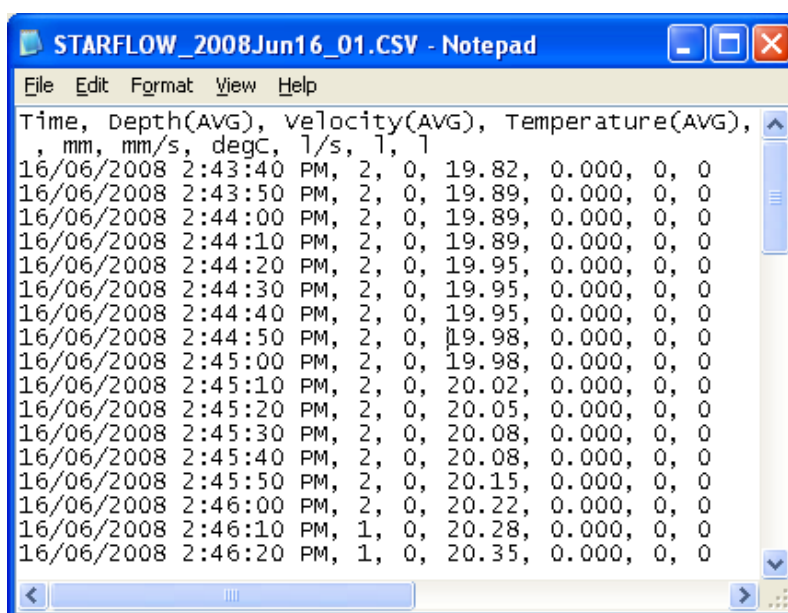
The **Text View** shows your logged data in a tabular form. The column widths are adjustable by dragging the divider between them. Use the scroll bar to select the data to view.



Time	Depth(AVG)	Velocity(AVG)	Temperature(AVG)	FlowRate(RAW)	Flow(RAW)	Total Flow(RAW)
16/06/2008 2:43:40 PM	2	0	19.82	0	0	0
16/06/2008 2:43:50 PM	2	0	19.89	0	0	0
16/06/2008 2:44:00 PM	2	0	19.89	0	0	0
16/06/2008 2:44:10 PM	2	0	19.89	0	0	0
16/06/2008 2:44:20 PM	2	0	19.95	0	0	0
16/06/2008 2:44:30 PM	2	0	19.95	0	0	0
16/06/2008 2:44:40 PM	2	0	19.95	0	0	0
16/06/2008 2:44:50 PM	2	0	19.98	0	0	0
16/06/2008 2:45:00 PM	2	0	19.98	0	0	0
16/06/2008 2:45:10 PM	2	0	20.02	0	0	0
16/06/2008 2:45:20 PM	2	0	20.05	0	0	0
16/06/2008 2:45:30 PM	2	0	20.08	0	0	0
16/06/2008 2:45:40 PM	2	0	20.08	0	0	0
16/06/2008 2:45:50 PM	2	0	20.15	0	0	0
16/06/2008 2:46:00 PM	2	0	20.22	0	0	0
16/06/2008 2:46:10 PM	1	0	20.28	0	0	0
16/06/2008 2:46:20 PM	1	0	20.35	0	0	0
16/06/2008 2:46:30 PM	2	0	20.41	0	0	0
16/06/2008 2:46:40 PM	2	0	20.48	0	0	0
16/06/2008 2:46:50 PM	2	0	20.55	0	0	0
16/06/2008 2:47:00 PM	2	0	20.61	0	0	0
16/06/2008 2:47:10 PM	2	0	20.61	0	0	0
16/06/2008 2:47:20 PM	2	0	20.61	0	0	0
16/06/2008 2:47:30 PM	3	0	20.68	0	0	0
16/06/2008 2:47:40 PM	3	0	20.68	0	0	0
16/06/2008 2:47:50 PM	2	0	20.68	0	0	0
16/06/2008 2:48:00 PM	2	0	20.71	0	0	0
16/06/2008 2:48:10 PM	2	0	20.74	0	0	0
16/06/2008 2:48:20 PM	2	0	20.74	0	0	0
16/06/2008 2:48:30 PM	2	0	20.74	0	0	0
16/06/2008 2:48:40 PM	2	0	20.77	0	0	0
16/06/2008 2:48:50 PM	2	0	20.81	0	0	0
16/06/2008 2:49:00 PM	2	0	20.81	0	0	0
16/06/2008 2:49:10 PM	2	0	20.88	0	0	0
16/06/2008 2:49:20 PM	2	0	20.88	0	0	0

### 10.2.2 Opening with Notepad

Opening your data file in Notepad can be useful if you suspect some file corruption. Notepad doesn't try to interpret the data, so you can scan through it and manually correct any anomalies.

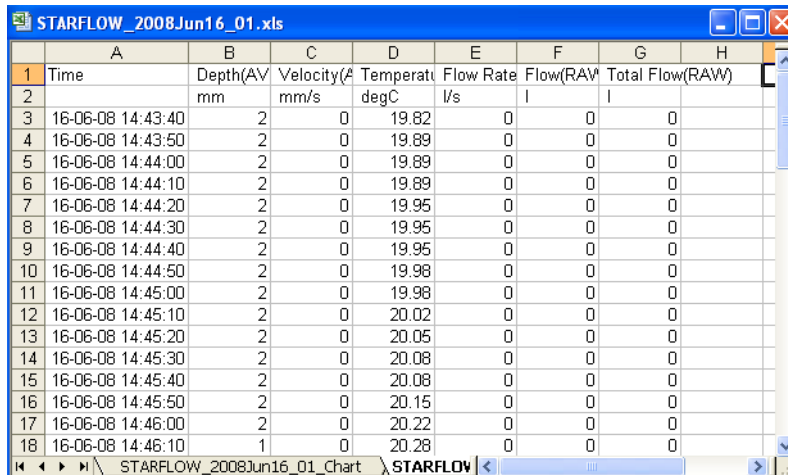


```

STARFLOW_2008Jun16_01.CSV - Notepad
File Edit Format View Help
Time, Depth(AVG), Velocity(AVG), Temperature(AVG),
, mm, mm/s, degC, l/s, l, l
16/06/2008 2:43:40 PM, 2, 0, 19.82, 0.000, 0, 0
16/06/2008 2:43:50 PM, 2, 0, 19.89, 0.000, 0, 0
16/06/2008 2:44:00 PM, 2, 0, 19.89, 0.000, 0, 0
16/06/2008 2:44:10 PM, 2, 0, 19.89, 0.000, 0, 0
16/06/2008 2:44:20 PM, 2, 0, 19.95, 0.000, 0, 0
16/06/2008 2:44:30 PM, 2, 0, 19.95, 0.000, 0, 0
16/06/2008 2:44:40 PM, 2, 0, 19.95, 0.000, 0, 0
16/06/2008 2:44:50 PM, 2, 0, 19.98, 0.000, 0, 0
16/06/2008 2:45:00 PM, 2, 0, 19.98, 0.000, 0, 0
16/06/2008 2:45:10 PM, 2, 0, 20.02, 0.000, 0, 0
16/06/2008 2:45:20 PM, 2, 0, 20.05, 0.000, 0, 0
16/06/2008 2:45:30 PM, 2, 0, 20.08, 0.000, 0, 0
16/06/2008 2:45:40 PM, 2, 0, 20.08, 0.000, 0, 0
16/06/2008 2:45:50 PM, 2, 0, 20.15, 0.000, 0, 0
16/06/2008 2:46:00 PM, 2, 0, 20.22, 0.000, 0, 0
16/06/2008 2:46:10 PM, 1, 0, 20.28, 0.000, 0, 0
16/06/2008 2:46:20 PM, 1, 0, 20.35, 0.000, 0, 0
    
```

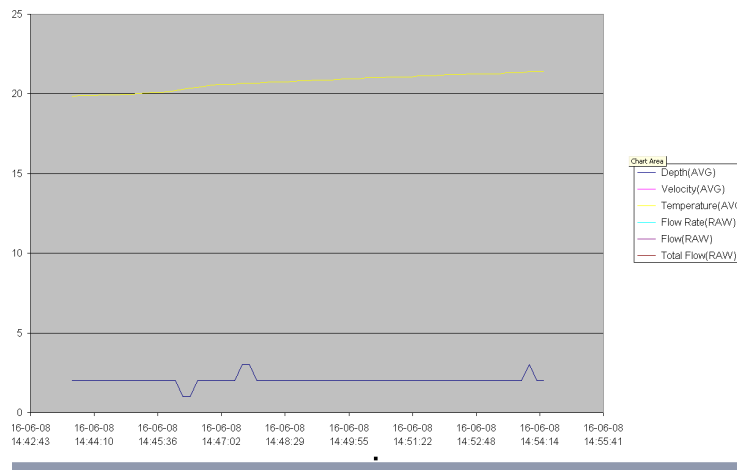
### 10.2.3 Opening with Excel

Opening your data in Excel gives you a lot more power to display, format, print, and analyse your data. When opened in Excel, two sheets are created; the first one is for viewing the data in a tabular format:



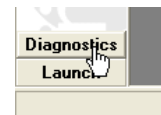
	A	B	C	D	E	F	G	H
1	Time	Depth(AVG)	Velocity(AVG)	Temperature(AVG)	Flow Rate(AVG)	Flow(RAW)	Total Flow(RAW)	
2		mm	mm/s	degC	l/s	l	l	
3	16-06-08 14:43:40	2	0	19.82	0	0	0	
4	16-06-08 14:43:50	2	0	19.89	0	0	0	
5	16-06-08 14:44:00	2	0	19.89	0	0	0	
6	16-06-08 14:44:10	2	0	19.89	0	0	0	
7	16-06-08 14:44:20	2	0	19.95	0	0	0	
8	16-06-08 14:44:30	2	0	19.95	0	0	0	
9	16-06-08 14:44:40	2	0	19.95	0	0	0	
10	16-06-08 14:44:50	2	0	19.98	0	0	0	
11	16-06-08 14:45:00	2	0	19.98	0	0	0	
12	16-06-08 14:45:10	2	0	20.02	0	0	0	
13	16-06-08 14:45:20	2	0	20.05	0	0	0	
14	16-06-08 14:45:30	2	0	20.08	0	0	0	
15	16-06-08 14:45:40	2	0	20.08	0	0	0	
16	16-06-08 14:45:50	2	0	20.15	0	0	0	
17	16-06-08 14:46:00	2	0	20.22	0	0	0	
18	16-06-08 14:46:10	1	0	20.28	0	0	0	

There is also a second sheet called “filename\_Chart” that displays the data as a graph:



## 11.0 DIAGNOSTICS

Diagnostics are accessed from the main Starlog V4 window by selecting the Diagnostics tab on the left toolbar. Please see the screenshot to the right:



Diagnostics provides several functions to assist you with various problems you may encounter using data loggers. Each function is explained below:

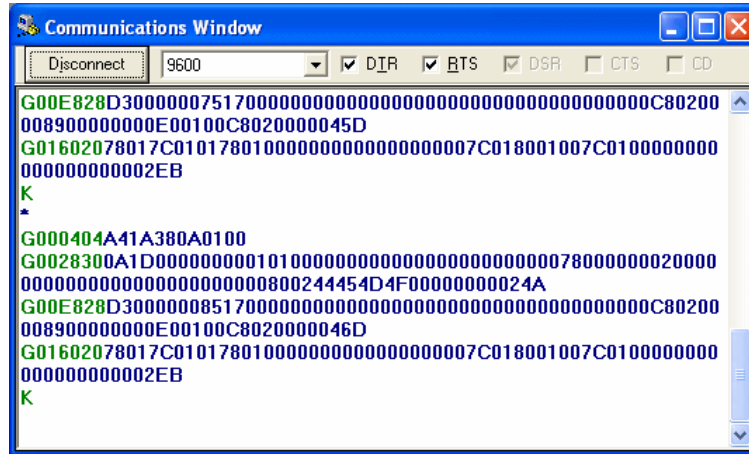
### 11.1 Comms Window

The **Comms Window** function allows you to watch the communications between your PC and your data logger. You can watch the progress of logger programming or unloading, or you can watch the commands issued during the test display.





The **Comms Window** is frequently useful for diagnosing modem problems and logger baud rate mismatches.



Data sent from the PC to the logger is shown in green, while data sent from the logger to the PC is shown in blue. The above screenshot shows communications that result from a typical test display. If no communication was taking place, you'd just expect to see regular star (asterisk “\*”) prompts from the logger.

The top of the window lets you control the serial port, and provides some status indicators:

**Connect/Disconnect:** Click to connect/disconnect to/from the serial port.

**Baud rate:**

The baud rate to use. If no star prompts are detected, the software will automatically cycle through all the baud rates until a star prompt is detected.

**DTR:**

Controls the Data Terminal Ready signal. Modems require this signal to be on (ticked) to enable dialling out to other modems.

**RTS:**

Controls the Request To Send signal. Unidata data loggers require this signal to be on (ticked) to wake up for communication.

**DSR:**

Indicates the current state of the Data Set Ready signal. The DSR state usually reflects the DTR signal.

**CTS:**

Indicates the current state of the Clear To Send signal. The CTS state usually reflects the RTS signal.

**CD:**

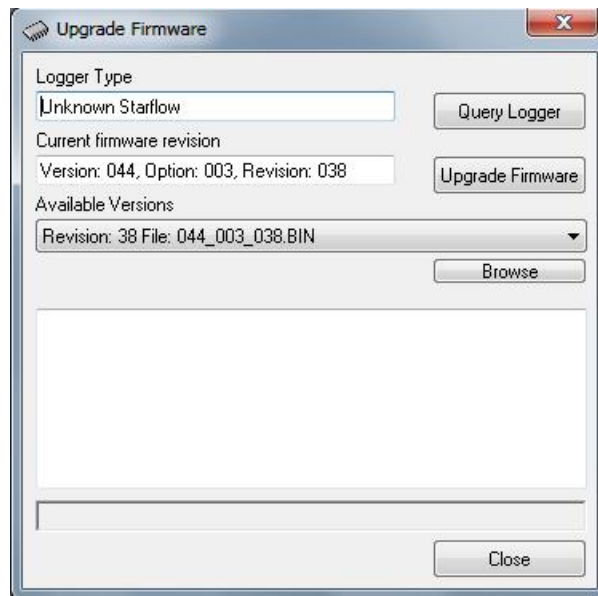
Indicates the current state of the Carrier Detect signal. Modems turn this signal on when they are connected to another modem.

**11.2 Upgrade Firmware**

The **Upgrade Firmware** function allows you to upgrade the internal firmware of most Unidata data loggers.

Click the **Query Logger** button to have the software determine what type of logger is currently connected, and what version of firmware it is currently running.





**Logger Type:** Shows the logger type identified by the Query Logger function.

**Current firmware revision:** Shows the firmware version currently programmed in the connected data logger.

**Available Versions:** Lists all the firmware available to the Starlog software that is compatible with the connected data logger. You may click the **Browse** button to manually select an unlisted firmware, but updating a logger with unlisted firmware may make the logger unusable or even damage it!

**Query Logger:** Automatically identifies the logger connected to the PC.

**Upgrade Firmware:** Click to upgrade the connected data logger to the firmware selected in the Available Versions field. The window will indicate the progress of the upgrade.

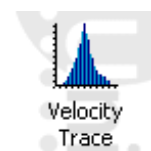
### 11.3 SDI-12 Test

The **SDI-12 Test** function allows you to check the operation of the Starflow as an SDI-12 recorder and the operation if it is being used as an SDI-12 sensor such as a Starflow instrument connected to an external logger. This is explained in more detail on page 85.

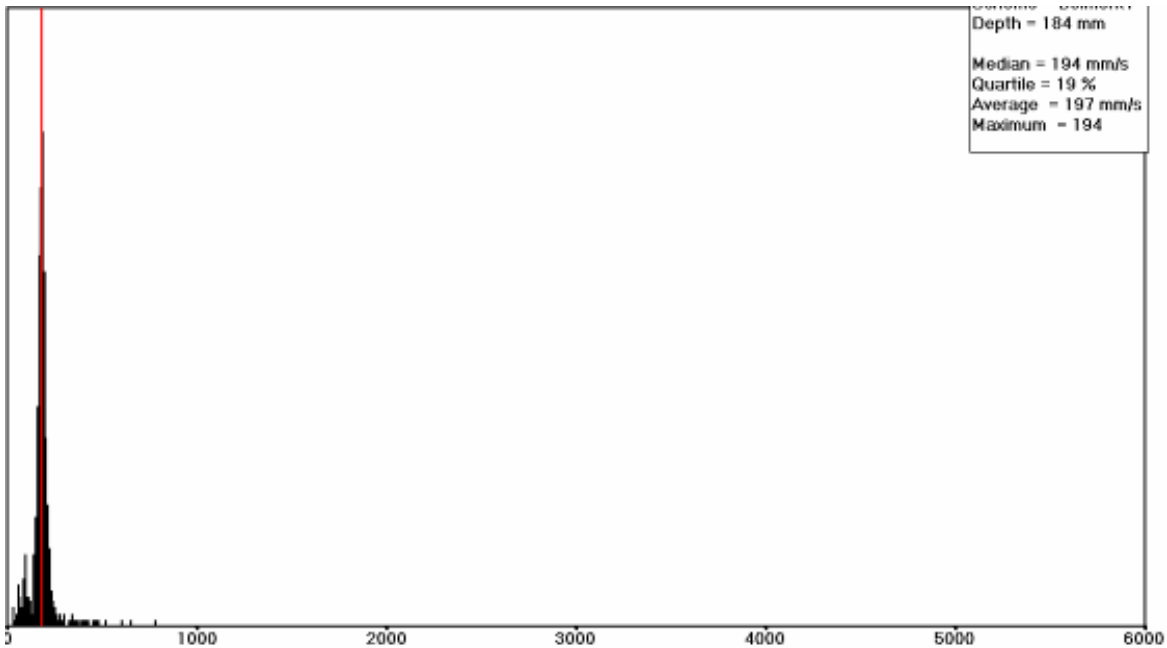


### 11.4 Velocity Trace

This facility helps you to learn more about using Starflow for flow measurement. It lets you look at the velocity data the Starflow is recording and to experiment with ways of improving the signal.



This program displays as a histogram the velocities collected during each measuring cycle. It lets you observe the “shape” of the signal and review a “mean” velocity calculated in several ways. Using this you may carry out tests and experiments in various flow environments.



## 12.0 VELOCITY HISTOGRAMS

The Velocity Histograms that you will see by using Velocity Trace from the Control Panel are the Starflow’s view of the channel. It is the composite of a range of factors including both characteristics of the equipment, the sampling method and the velocity dynamics within the channel.

The following statistics are computed from the range of Doppler shifts measured for each cycle.

**Median:** The computed median of all the Doppler shifts detected, measured in mm/sec. This is the value presently logged.

**Quartile:** A ratio of the width of the peak to the height. This can provide an indication of the “quality” of the histogram. 20% to 50% are typical values. A transducer buried in sand will give 100% to 200%

**Average:** The mathematical average of all measured velocities, in mm/s. This can be unacceptably biased by signal noise.

**Number Of Samples:** The actual number of Doppler shifts/samples collected and shown in the displayed histogram.

**Maximum:** The Doppler shift of the peak of the histogram, in mm/s.

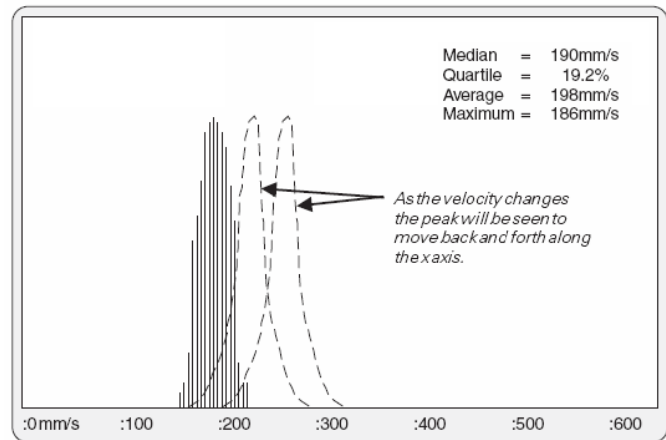
The screen will cycle, refreshing the plot and summaries each time a new set of samples are acquired. The x axis is scaled to 6000 mm/s.

The following examples are shown as you would see them on your screen.

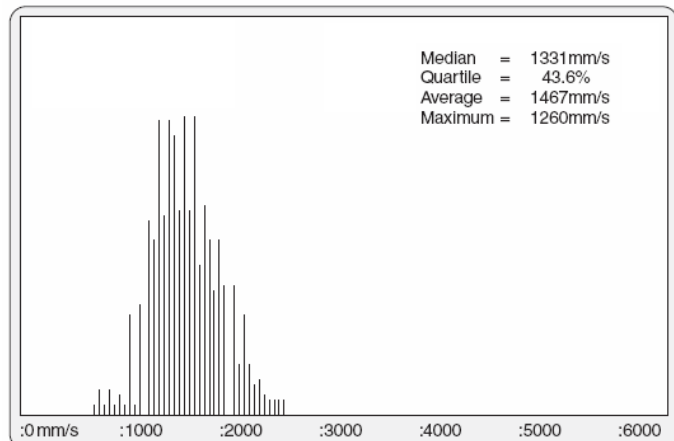
An ideal signal when presented as a histogram appears as a symmetrical peak. The x axis represents the velocity in mm/sec. The y axis indicates the relative number of times a particular velocity has been received. The approximate “centre” of this peak is the value of the velocity we are looking for, as it will be the mean of all the echoes received.

As the velocity changes the peak will be seen to move back and forth along the x axis.

**Note:** The Velocity Trace does not indicate Flow Direction, only Velocity magnitude. The width of the peak indicates that a range of velocities is being measured with each reading. The narrowest of peaks would be obtained in the ideal conditions of perfectly laminar, tranquil flows in water with an even distribution of reflective particles. These would still be 50—100 mm/sec wide and would appear as above.



In fast turbulent water the peak can be 500 mm/sec or more wide because of the range of velocities present in eddies and swirls. The following histogram is typical.



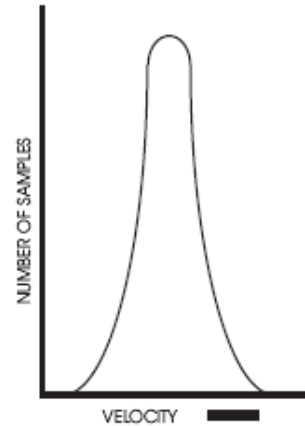
### 12.1 Inherent Factors in Doppler Histograms

The width and shape of the peak displayed is caused by a range of factors all of which are measured by the Doppler as a frequency shift.

Some of these factors are inherent in the method.

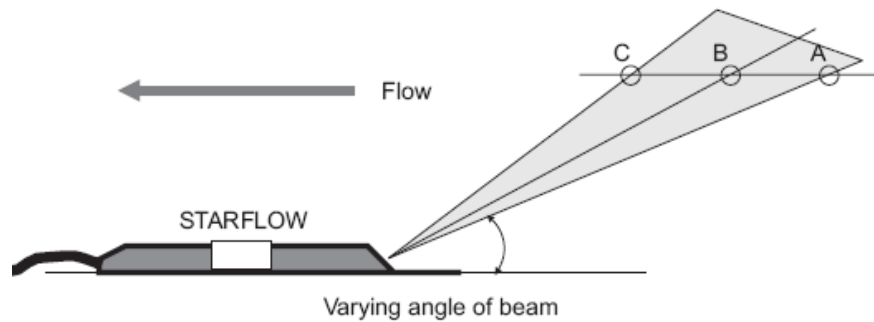
In flowing channels there are always a range of different velocities present but even in “perfect” conditions, with all water flowing at the same velocity the histogram displayed will still have a characteristic “skinny bell” shape.

This is a composite of a variety of effects related to using Dopplers to measure water velocity in streams.

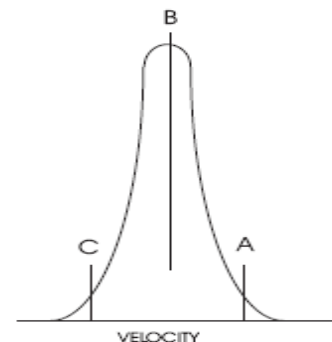


#### 12.1.1 Varying Angle as Particles Pass through the Main Beam

The acoustic beam has a width, or spread, of about  $10^\circ$ . The centreline of the beam is aligned at  $30^\circ$  above horizontal but as a particle passes horizontally through, the actual angle within the beam varies from  $25^\circ$  to  $35^\circ$ .



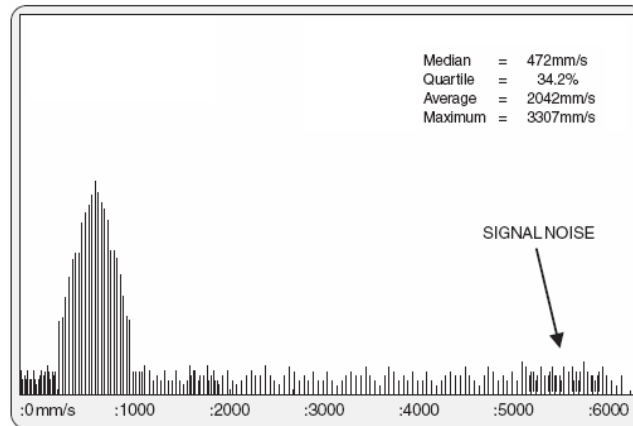
The Doppler shift measured is the velocity component along the line between the particle and the transmitter, so this changes 5% as the particle traverses the beam.



#### 12.1.2 Measuring Errors Due To “Signal Noise”

“Signal Noise” is a convenient term used to classify any Doppler shifts that cannot be explained as legitimate measurements of water velocity. The Starflow is measuring tiny signals echoed back from small particles along a path scattered with many other particles, all in motion. The returned signals are sometimes echoes of echoes, vague and ambiguous and can be misinterpreted by the measuring circuits resulting in an incorrect Doppler shift.

These result in frequency shifts being measured that are outside the range of velocities expected. They can represent several percent of measurements in a scan but are typically widely distributed. They are usually statistically irrelevant because of the signal analysis techniques used to define the median.



## 12.2 Channel Characteristics Affecting the Signal

All signals are affected by the factors discussed above. Additional factors related to channel and flow characteristics can influence the measured velocity. These result in a widening of the histogram base because of the broader spread of Doppler shifts measured.

In a channel with laminar flows the shape of the peak remains symmetrical. If other factors disturb the velocity profiles within the field of view of the Starflow, the histogram may become distorted. This may introduce a bias to the computed velocity.

If the shape of the histogram is the same from cycle to cycle then it represents the Starflow view of the channel and not some transient aberration. Hydrographers have to decide if this represents a valid velocity measurement, or if the site is unsuitable.

### 12.2.1 The Nature and Location of the “Reflectors” in the Water

The Starflow measures echoed Doppler shifts from anything that is acoustically reflective and in the signal beam. It cannot discriminate where the echo is coming from and the bigger, closer reflectors will generate a stronger signal than smaller or more distant reflectors.

Reflectors can include:

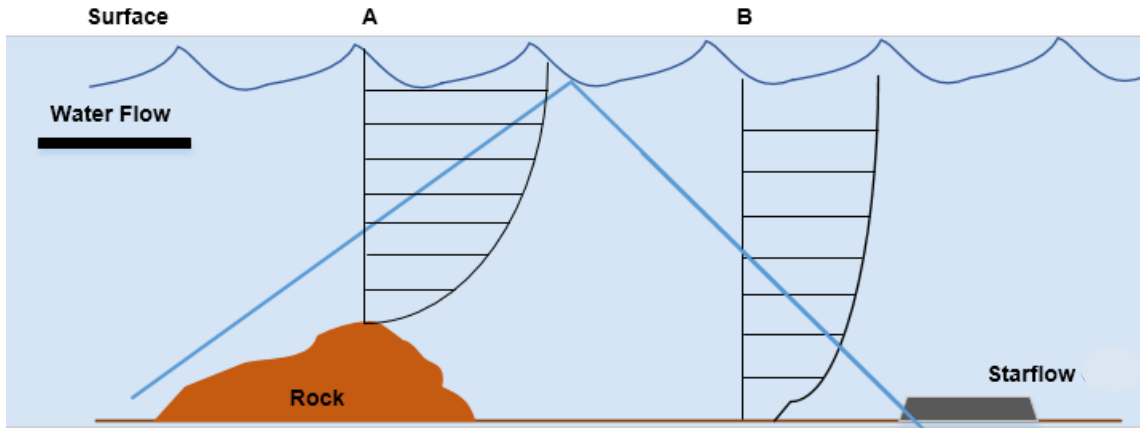
- All types of particles in suspension.
- Alluvial saltation load such as sand, pebbles and rocks moving at or near the bed.
- Leaves, sticks, and organic material.
- Surface waves from wind or velocity.
- Bubbles and entrapped air pockets.

During the time it takes to traverse the signal beam a particularly good reflector can be measured 100 or more times. The velocity of this reflector may bias or dominate one velocity measurement. This will tend to be averaged out during the logging period if it only happens occasionally.

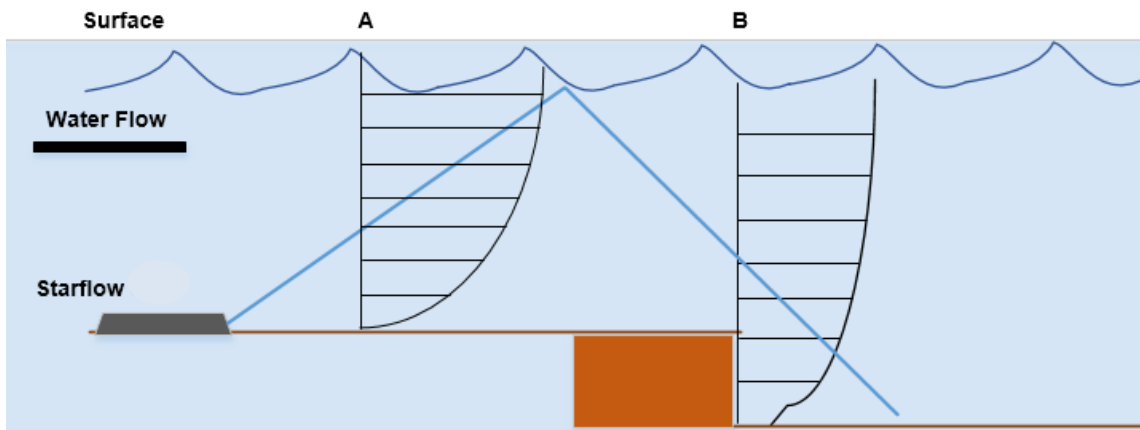
If it happens consistently it is a site characteristic. The relevance of this to the mean channel velocity will need to be understood and compensated for in processing.

### 12.2.2 Velocity Variations Due to Cross-Section Changes

If changes to the channel cross section introduce different velocity regimes within the view of the Starflow, the histogram is distorted. At low flows in clean streams, the beam can be reflected for some distance and “see” unexpected velocities from some distance away.

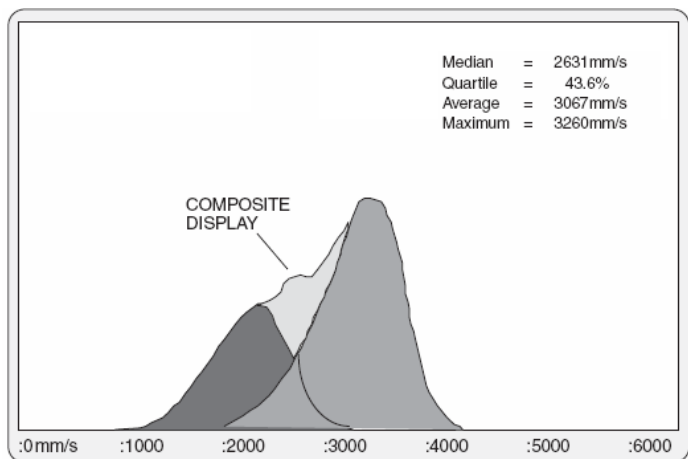


**Example 1 : Velocity accelerating around rock**



**Example 2 : Velocity variations at culvert exit**

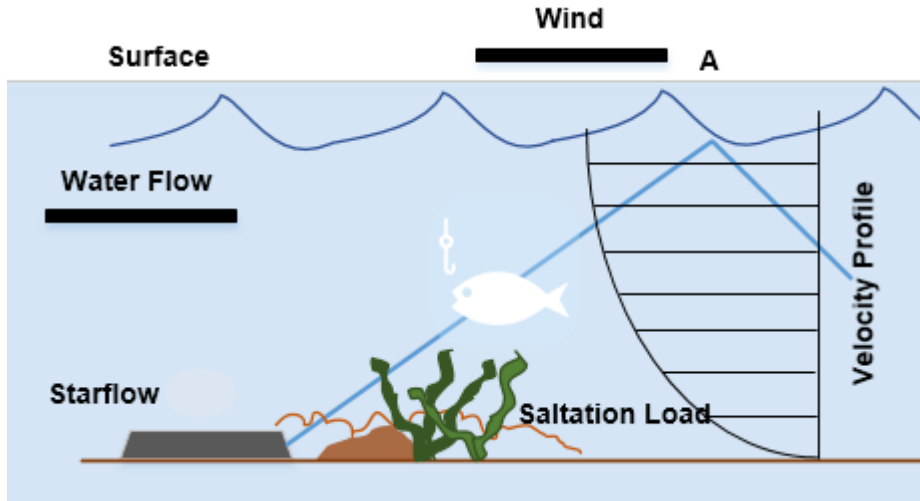
Higher velocities could also be seen at localised parts of the channel where water is accelerating around obstacles, or still carrying the effects of upstream higher velocities.



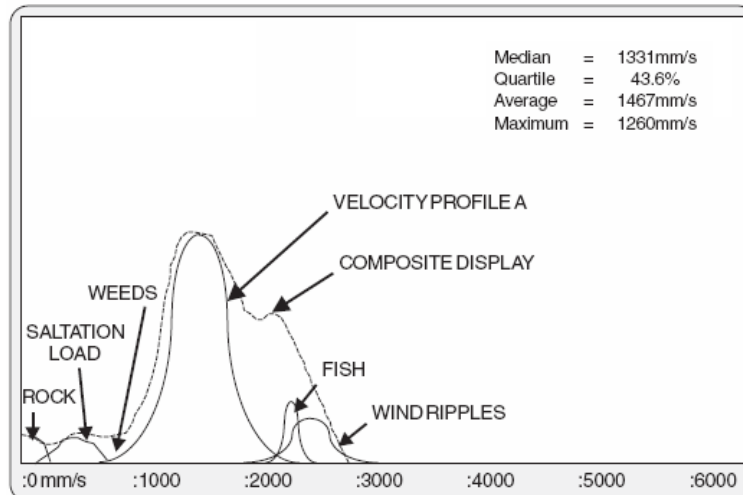
### 12.2.3 Measuring Unexpected Velocities

In some cases signals are from the wrong targets. A waving weed, aquatic animals, a strong stationary reflector in the bed, slow moving saltation targets or ripples on the surface can all produce Doppler shifts that are not directly related to the water velocity.

The “field of view” of the Starflow can extend for at least 1m along the beam in clean water and reduces as the sediment load of the stream increases.



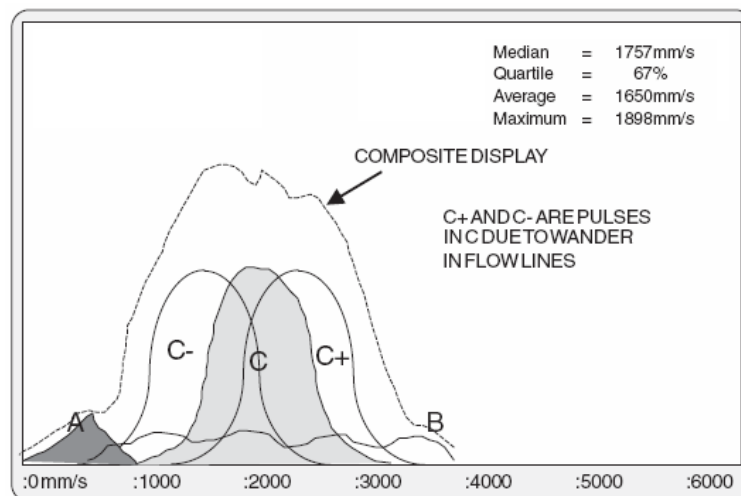
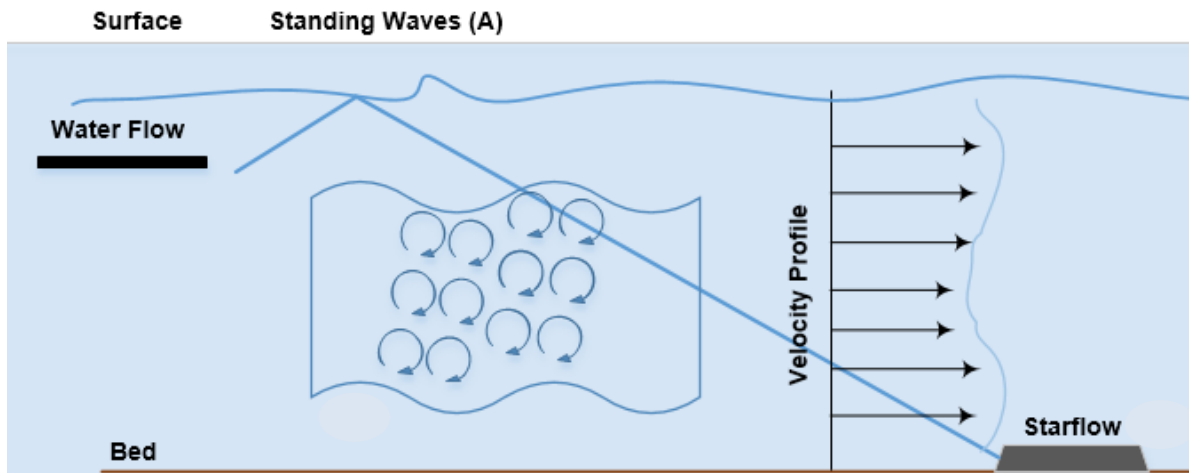
The beam can reflect from the surface underside and can detect different velocities to those expected. This results in a distorted peak, or a double or multiple peak in some situations, the composite of all velocities seen along the path. Such sites may not be suitable for the Starflow as the flow is not laminar.





### 12.2.4 Measuring Turbulent Velocities

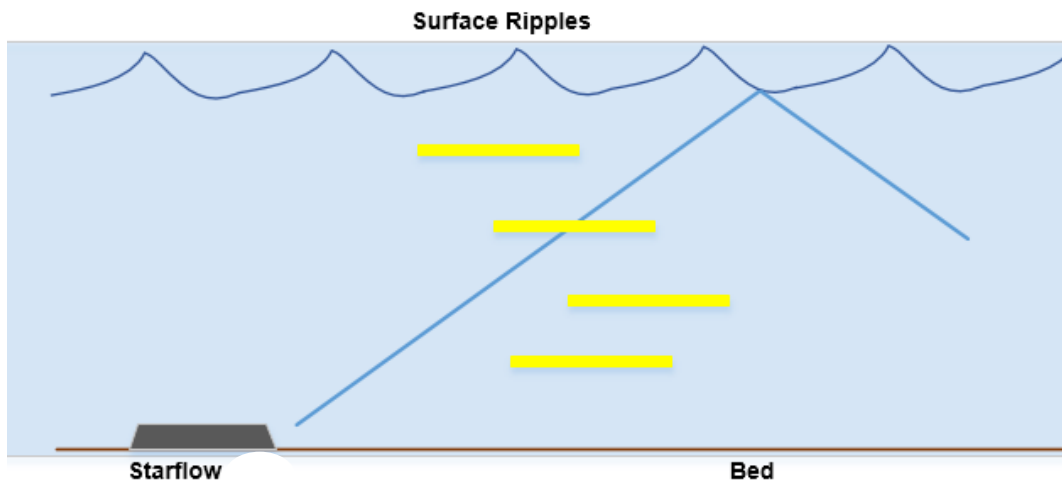
In higher bedslope streams a wide and multiple peaks may be displayed because of the complex moving landscape presented to the Starflow. The fact that many repeats of similar velocity histograms are seen indicates that the different velocity components seen are valid. How to interpret such signals is the issue.



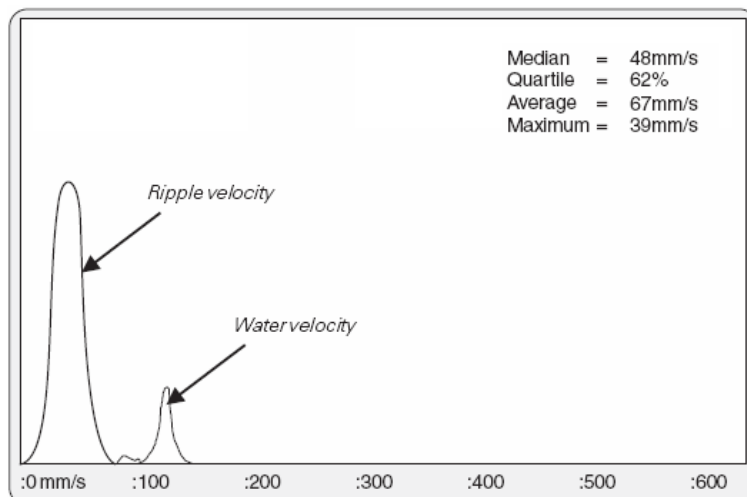
### 12.2.5 Effects of Surface Ripples

In shallow water the presence of ripples or small waves on the surface can cause complications. The ripples may be caused by wind, or be a feature of the channel caused by obstructions in the channel or by irregularities on the bank. Ripples will be moving and at a different velocity to the water.

In shallow and clean water the Starflow can clearly see the surface. As the ripples move they present a varying effect on the Doppler signal. At times the ripples will be positioned so that the carrier reflects away from the Starflow. A minor signal is detected but many more signals are detected from the water and a correct velocity is measured.



When the ripples move slightly one can become positioned such that it becomes an “acoustic mirror” reflecting back a powerful signal and dominating the signals from the channel. The median velocity will be biased toward the ripple velocity and will be incorrect.



In practice, a series of histograms in such a situation will move back and forth between the two extreme conditions, logging an average that is not the correct velocity. At some sites ripples will be a characteristic at certain levels. Positioning and orienting the Starflow so that it does not point directly into a “mirror” ripple face is the best prevention.

### 12.2.6 Measuring Flows in Very Small Channels

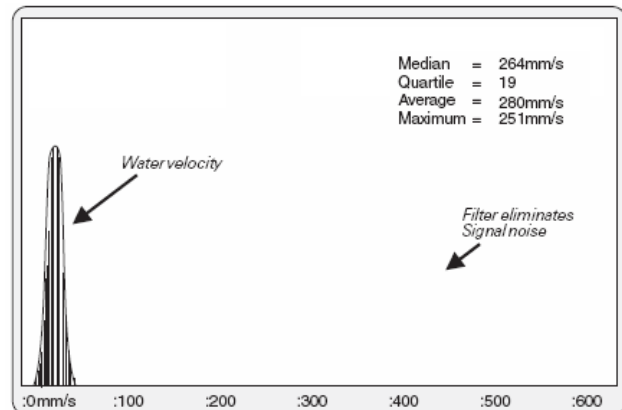
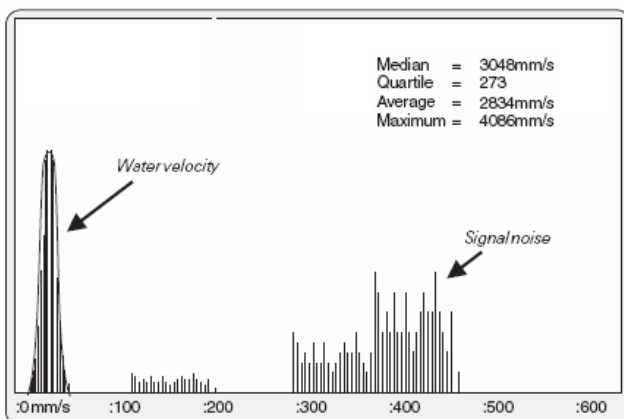
The Starflow can be installed in channels as narrow as 75mm. It can measure minimum velocities to 21mm/second in depths as low as 25mm. This flow rate is well below the measuring ability of most instruments, flumes or weirs. However the Starflow may struggle to operate correctly in these extreme conditions. The following conditions may be seen.

- The number of samples will be reduced. As velocities slow it takes the Starflow longer to measure each Doppler shift. At shallow depths the volume of water from which to acquire signals is reduced. These factors combine to mean the Starflow will generally not be able to acquire the full number of samples within the time allowed in a cycle. However, unless the water is extremely clean it will normally acquire enough signals for a sensible result.
- There will be an increase in the “signal noise”. Because of the difficult environment there will be an increase in very high velocity signals. This can bias most Doppler data beyond the ability of the signal analysis process to extract meaningful velocities. Logged data will jump between the correct value around 3m/sec.

These can be overcome by the use of a dynamic filter that can be enabled in the Starflow configuration to minimise the impact of signal noise. The level below which the filter is active can be set during the preparation of the Starflow for a site. Setting this level near the maximum Starflow velocity will result in the filter always operating. This should not be done at sites where legitimate high velocities are experienced as the filter may affect the results.

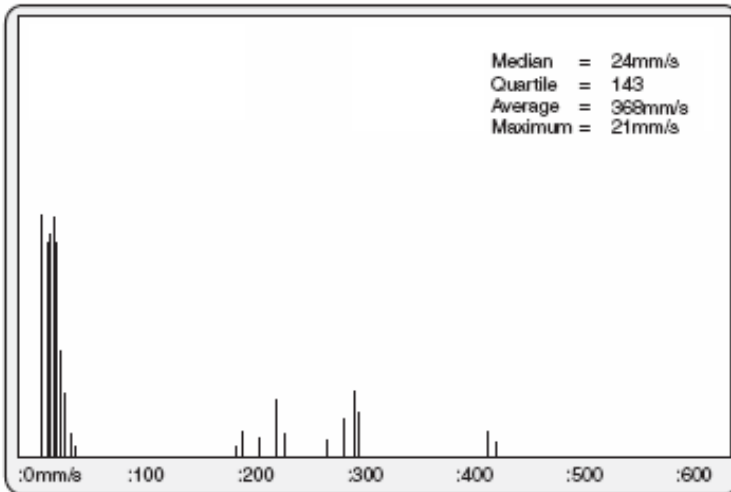
### 12.2.7 Effects of Filter on Low Velocity Signal in Shallow Water

Developments are continuing to improve the integrity of low velocity measurements. Software enhancements can be loaded into existing units. Hardware changes will be incorporated into future units.

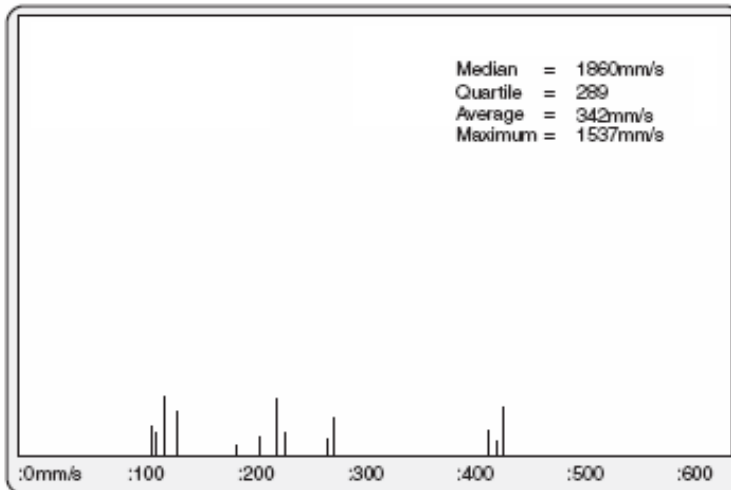


### 12.2.8 Velocities Too Slow to Measure

When velocities fall below the minimum level the Doppler can measure (21mm/sec) signals are not processed. However, under certain conditions signal noise is processed, a messy signal interpreted and a higher velocity results. Usually the processed quartile is too large. Using the filter will prevent most of these signals.



Legitimate velocity - some noise



Velocity too slow - only noise remaining

### 12.2.9 Measuring Velocities in Very Shallow Water

Poor quality velocity data will result if the water becomes so shallow that the top of the eyes of the transducer come out of the water. A configuration setting can be used to switch off the velocity operation of the Starflow when measured depth is so shallow that the eyes are exposed. The Velocity Trace display will be similar to that for very slow velocities.

The depth transducer will measure depths down to about 5mm. If it is important that these very low flows be measured, then the Starflow can be fitted into a narrow channel or recessed into the bed such that all the Starflow is underwater whenever flow occurs.

**12.2.10 Interference to the Transducers**

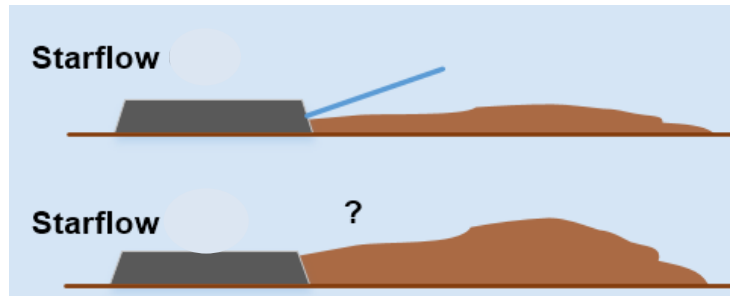
It is inevitable that bed mounted instruments will become layered with silt or algae. They may sometimes be affected by siltation or debris. The following effects have been noticed.

**Silt, Algae and Other Soft, Saturated Materials**

When covering the transducers with a 1-2mm thick layer, appear to have little effect on the signals logged. Provided the material is flexible and saturated the ultrasonic signals can be transmitted and received through it.

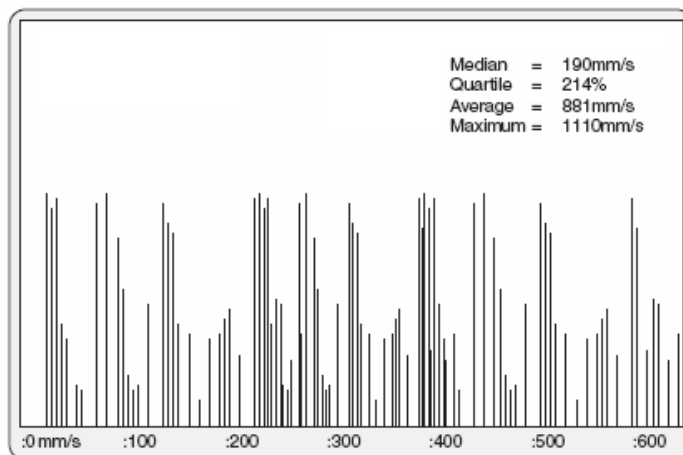
**Burying the Transducer in Sand**

Part buried sensors continue to operate. Provided some part of both velocity sensors are above the sand level the velocity recorded is the same as if the sensor was clear.



Completely buried sensors result in the signal collapsing. The signal does not appear to escape from beneath the sand to interrogate the water above.

The following histogram is typically seen. Note that the Quartile is reporting 214%, indicating that the spread of Doppler shifts is very wide and there is little consistency in shifts detected.



**Debris on the Sensors**

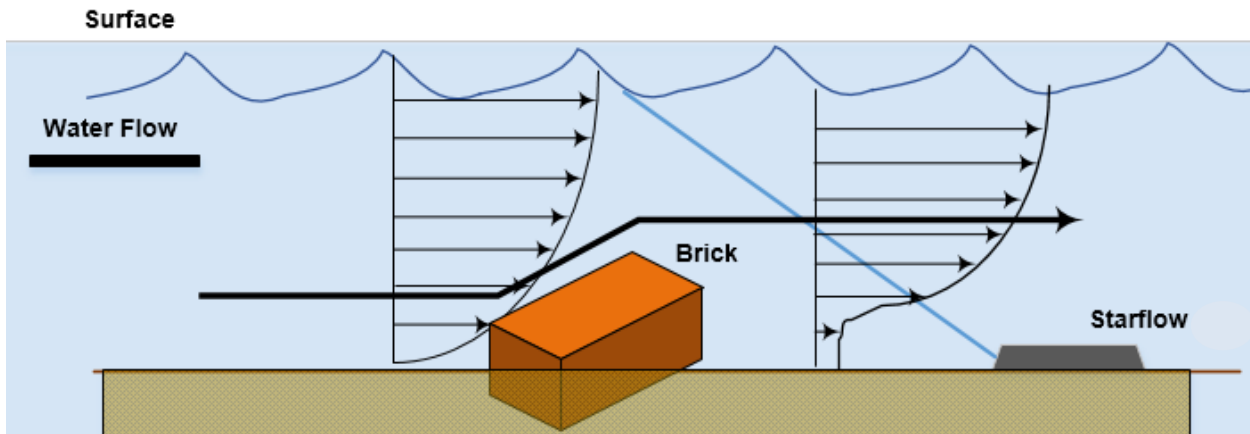
A similar effect to saltation can result from leaves and fine debris covering the sensors.

If the sensors are partly clear the recording is not affected. However one leaf lying across the two velocity sensors is enough to corrupt the signals and produce the type of histogram produced from a buried sensor.



**Disruption of the Flow Pattern by Debris**

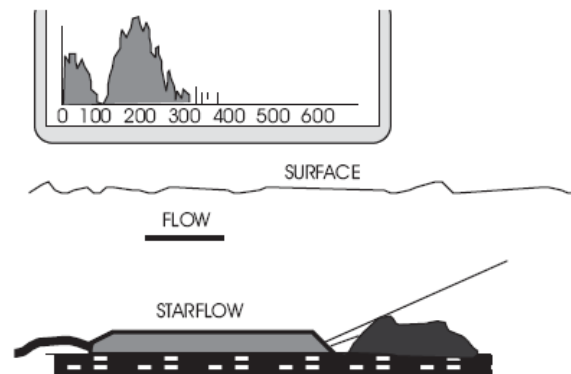
Larger debris in the vicinity may affect the logged values by changing the velocity distribution in the field of view of the sensor.



The flow distribution in the channel may no longer be laminar and the relationship between the logged and mean channel velocity may be distorted. The histogram produced appears similar to those described in 12.2.3 Measuring Unexpected Velocities on page 60 and 12.2.4 Measuring Turbulent Velocities on page 61.

**Blocking of the Signal Paths by Objects**

One strategically placed solid object, such as a rock, stick or other acoustically opaque material, may block the path to either sensor blanketing any signals. There will be a dominance of zero signals however those below 20 mm/sec. are discarded. The histogram will be distorted and have a characteristic vertical face at 20 mm/sec.



### 13.0 FLOW MEASUREMENT EXTENSIONS

Starflow is able to perform a wide range of flow calculations. This enables Starflow to be used in partly filled circular pipes, regular open channels and natural streams.

Other closed shapes such as ovoid pipes, require a user-defined Area Rating Table.

#### Terms

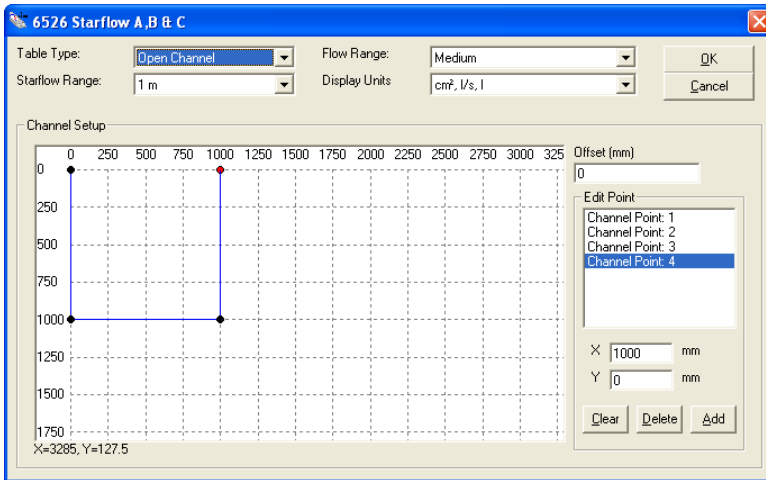
<b>Area (A):</b>	(cross section) Calculated by Starflow from the Area Rating Table using the measured depth. Units = cm <sup>2</sup> or dm <sup>2</sup> or m <sup>2</sup> .
<b>Area Rating Table:</b>	Look-up table of depth versus cross-sectional area of the channel being measured.
<b>Depth (D):</b>	Water depth above the Starflow unit. Units = mm.
<b>Velocity (V):</b>	Average (median) velocity of water in the channel measured by Starflow. Units = mm/s.
<b>Scan Rate (SR):</b>	Frequency of Starflow measurement cycle (Default = 60 secs). Units = second.
<b>Log Interval:</b>	Frequency of Starflow recordings. (Default = 15 minute). Units = scans
<b>Flow Rate (FR):</b>	Instantaneous Flow Rate, calculated by Starflow as the product of Velocity and Area. Units = l/s or kl/s or MI/s. $FR = V \times A$
<b>Flow (F):</b>	Flow volume each scan interval calculated by Starflow as the product of the Flow Rate and the measurement interval (Scan Rate). Units = l or kl or MI $F = FR \times SR$
<b>Total Flow (TF):</b>	Totalised Flow Volume. Units = l or kl or MI $TF = F$

#### 13.1 Overview of Creating a Flow Scheme

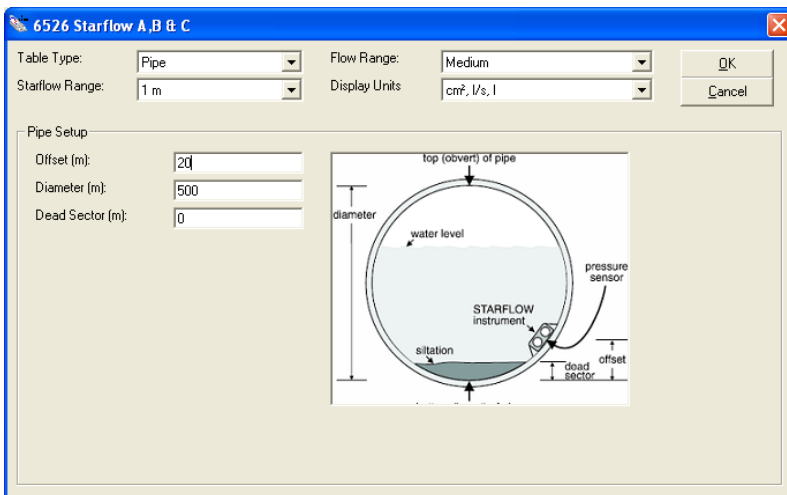
Creating a Starflow Scheme for flow measurement is a five-step process:

1. Determine the dimensions of the channel.
2. For open channels create a Cross-Sectional Area in the Flow extension instrument which has already been added in the scheme editor and enter the parameters of your channel. Points can be added and deleted, also note that the Starflow range should be selected, this will be written on the front of the Starflow.

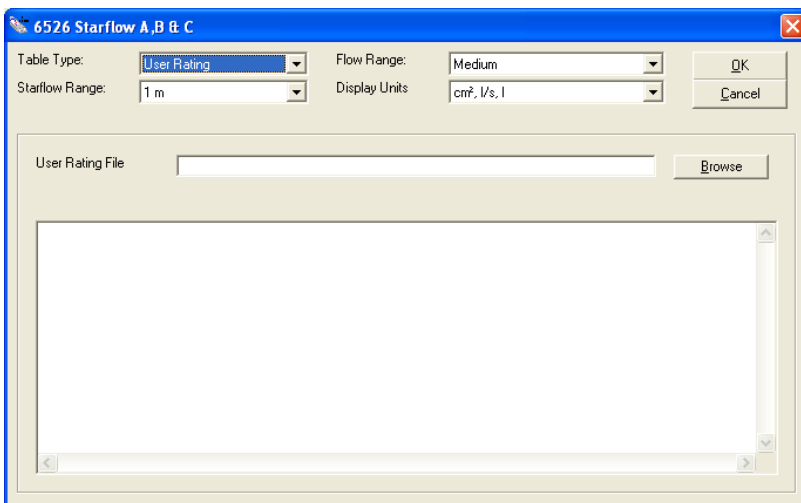
If your water depth will always be below 1m it is advisable to choose the 1m range.



3. The table type can also be a pipe; in this situation the pipe dimensions should be entered.



4. In the case of a User Defined Area Rating Table, select the text file to be used.



5. Once this has been completed then Save the Scheme.



### Creating an Area Rating Table

To calculate Flow, Starflow uses a lookup table called the Area Rating Table. The Area Rating Table is automatically generated when the scheme is saved from information provided in the Flow extension instrument.

An Area Rating Table is created for each scheme. This table is generated by one of three methods depending on the Starflow site.

Type	Starflow Site	How Created
Pipe	Partially filled circular pipe	Enter offset, diameter and dead sector in Area Rating Table window.
Open Channel	Open channel and natural stream	Entering the correct dimensions in the flow extension instrument
User Defined	Other closed-in shapes, like an ovoid pipe	Create a text file listing measurements. Nominate this file in the scheme's User Rating file.

### Partially Filled Pipe

There are four parameters needed to define a pipe installation.

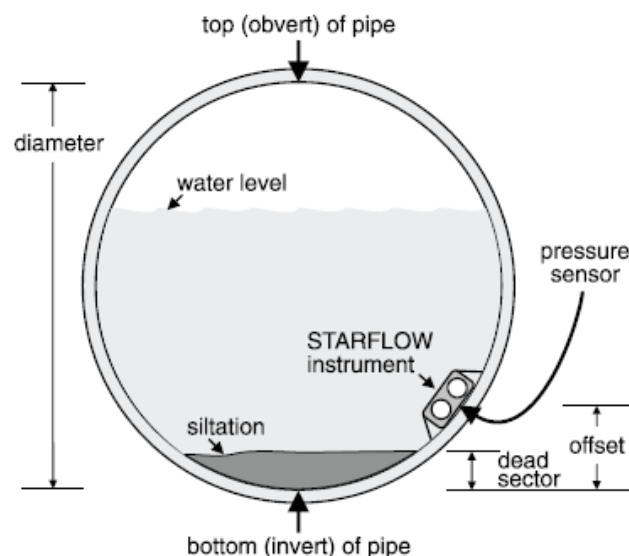
**Range (m)** Depth range of Starflow. This defines the depth range able to be measured by the Starflow. There are two ranges: 2m and 5m although if the depth will never be above the 1m range this should be selected for greater precision.

Define the smallest maximum depth for the channel that is compatible with your Starflow as this will give best results. For example - For a 2m depth range Starflow in a 900mm diameter pipe choose 1 to improve accuracy.

**Offset (m)** Offset defines the offset from the bottom of the pipe to the position of the Starflow depth sensor. This is usually zero; however, in some installations the Starflow may be located away from the bottom (to avoid silt and rubbish).

**Pipe Diameter (m)** Defines the pipe diameter.

**Dead Sector (m)** The deadband due to siltation (if any).

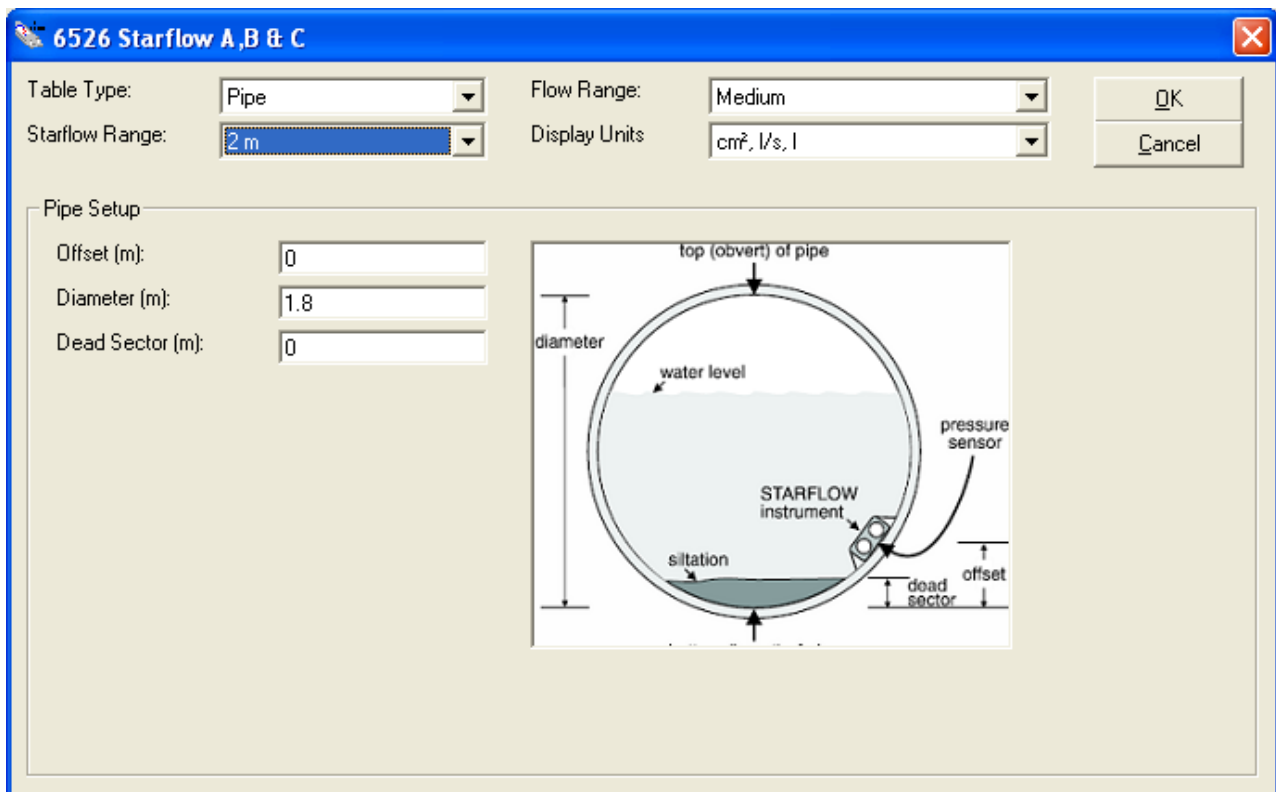
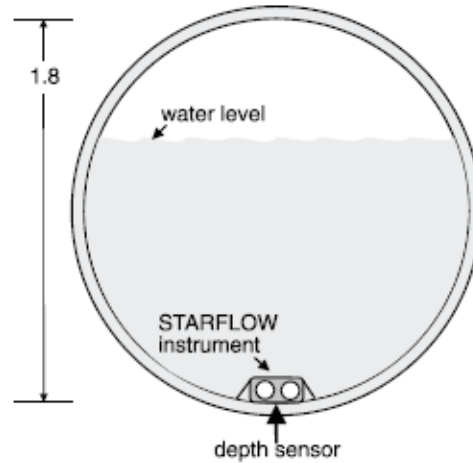


### Pipe Example 1

The pipe is 1.8m in diameter.

A Starflow unit is mounted at the bottom.

No silt (dead sector) in pipe.

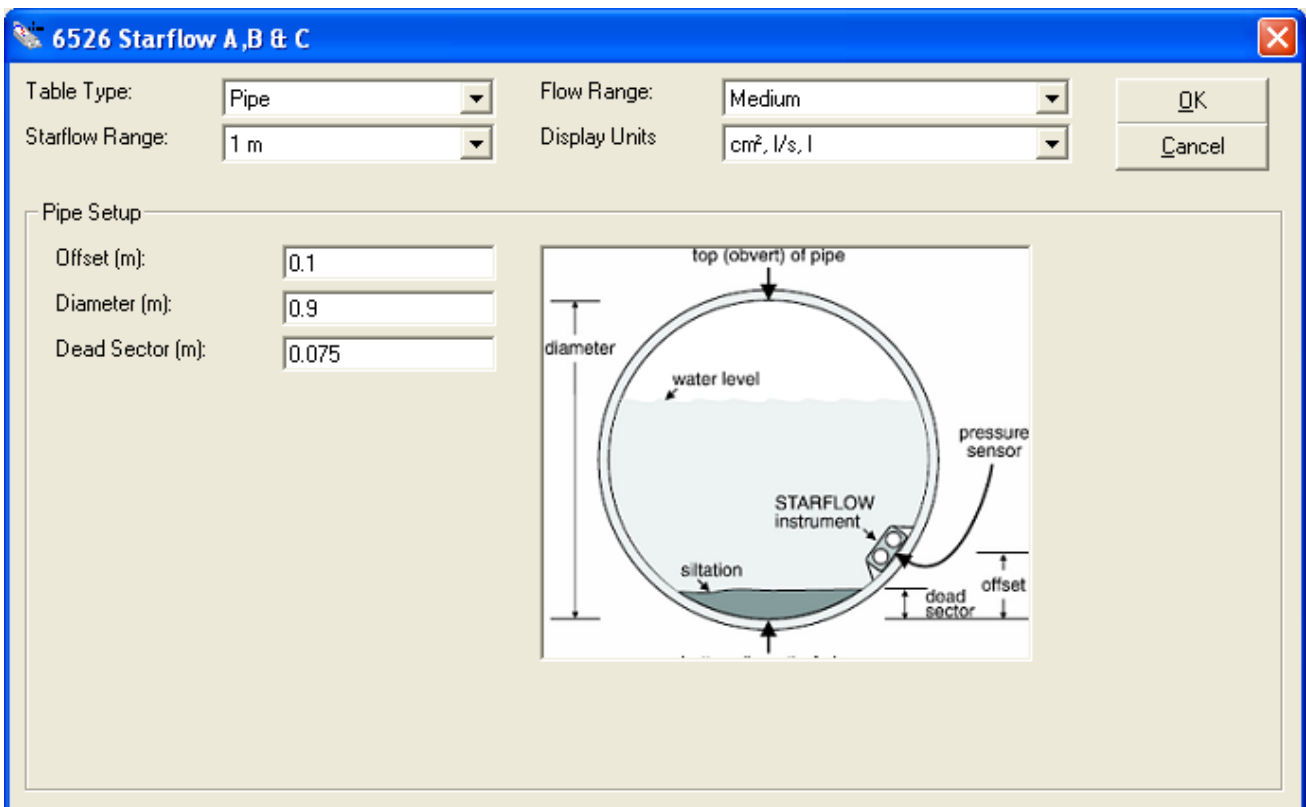
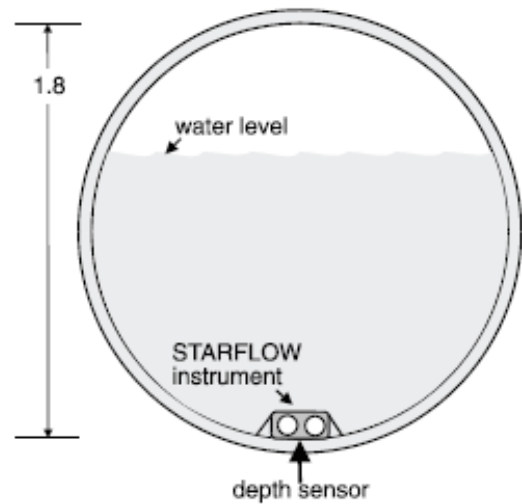


**Pipe Example 2**

The pipe is 900mm in diameter.

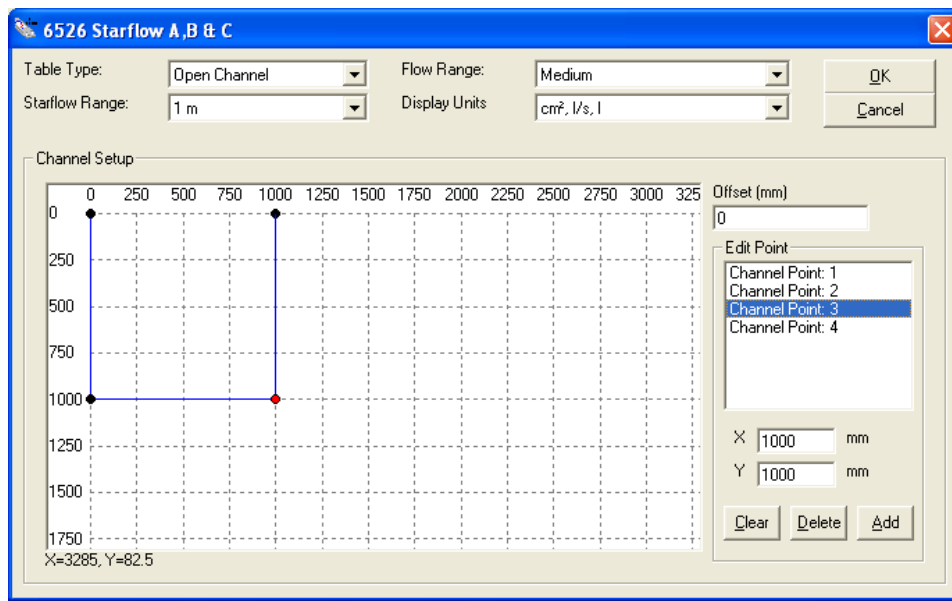
A Starflow unit is mounted 100mm up from the bottom and there is 75mm of silt in the pipe.

Note that the Table Range was set to 1 to give improved accuracy. Even though using a 2m depth Starflow, maximum depth in this application is 800mm (less than 1m).



### 13.1.1 Open Channel and Natural Stream

The dimensional definition of any open channel (or stream) consists of pairs of “distance” and “reduced level” measurement which define the profile of the channel or stream. These pairs comprise the Channel Cross-Sectional Area.



For constructed channels, this information is easily determined from known construction dimensions. For natural streams, you will need to make actual measurements of the stream bed.

In addition, you require two parameters, the depth range and offset.

**Range (m)** Depth range of the channel. This defines the maximum depth of the channel. There are two ranges: 2m and 5m.

Define the smallest maximum depth for the channel that is compatible with your Starflow as this will give best results. For example - for a 2m depth range Starflow in a 900mm maximum depth channel, choose 1 to improve accuracy.

**Offset (m)** This defines the offset (reduced level) of the Starflow instrument from the reference to the depth sensor.

#### Determining Distance/Reduced Level Information

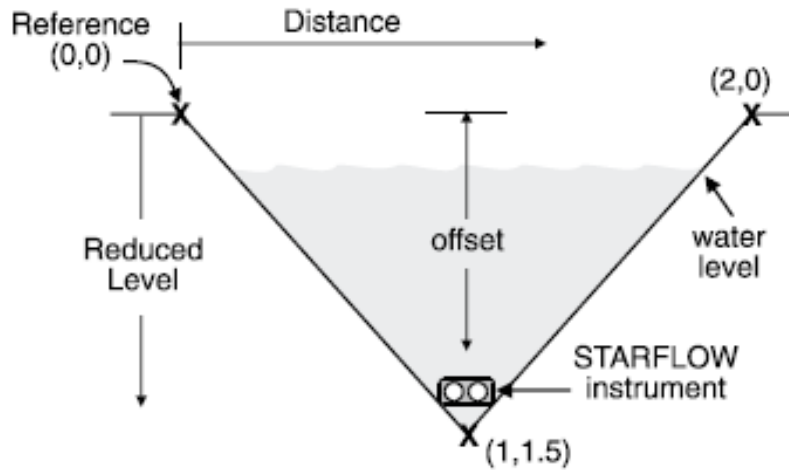
Select an arbitrary reference point above the highest water level expected. This is (0,0) pair.

Measure across the channel and down to the channel bed at sufficient number of points to define the bed profile. Adjacent points are connected by straight lines. There may be as many Distance/RL pairs as you need.

The reference point (0,0) may be any datum standard which must be above the highest water level.

**Open Channel Example 1:**

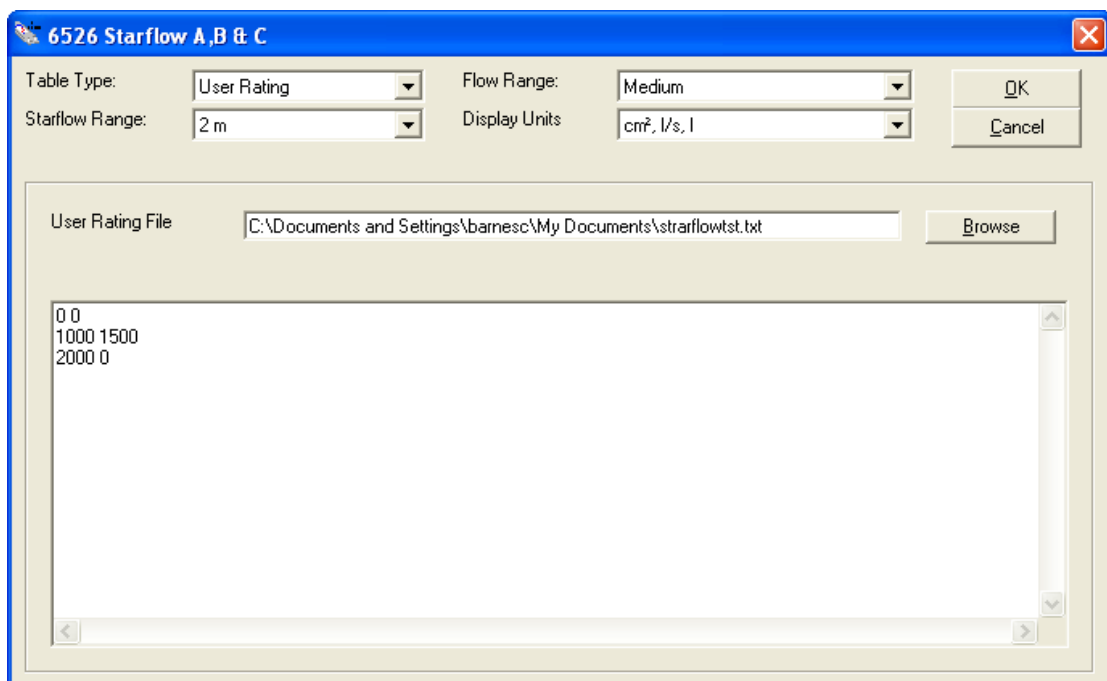
This Open Channel is a V-Notch shape which is 2m wide and 1.5m deep. A 2 metre depth range Starflow unit is mounted in the lowest point of the notch.



The Cross-Sectional Area File is shown below:

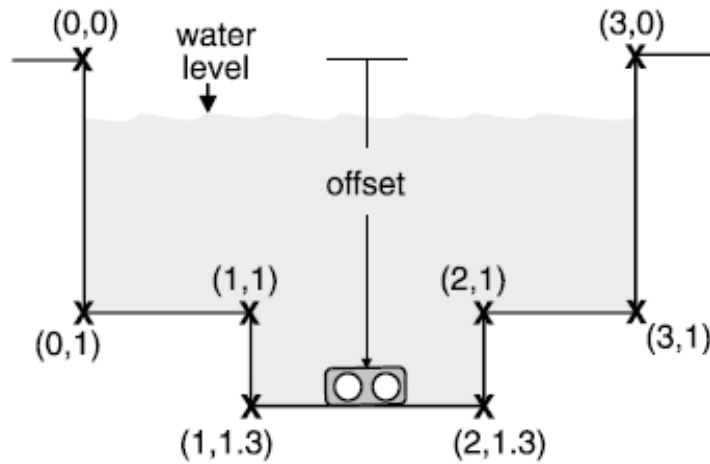
```
0 0
1000 1500
2000 0
```

The Area Rating Table window for this application looks like this:



**Open Channel Example 2:**

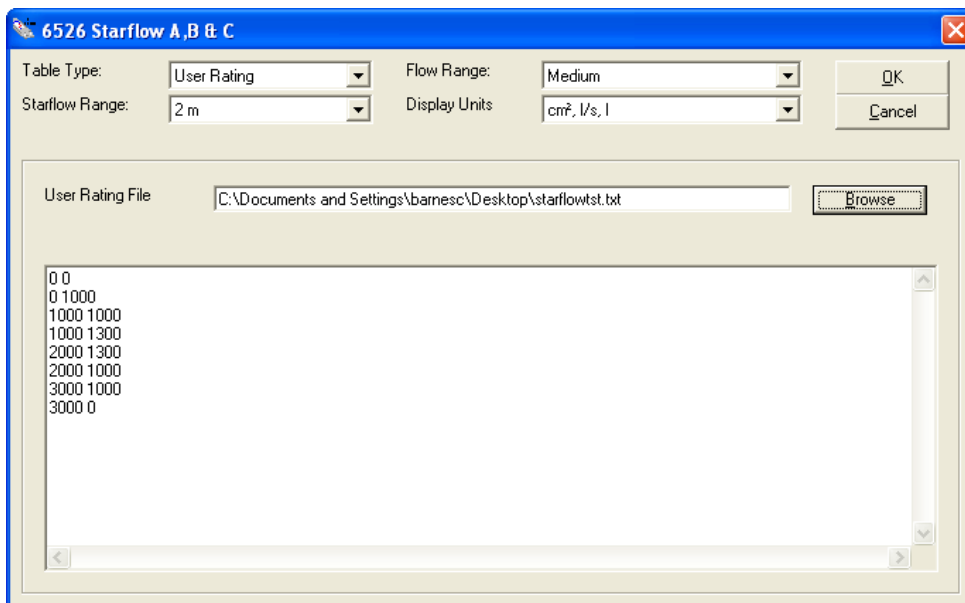
This Open Channel is a pre-formed two-stage Rectangular Channel which is 3 metres wide and 1m deep with a 1m x 300mm secondary channel in the centre.



The Cross-Sectional Area File (OCEX2.XAC) is shown below:

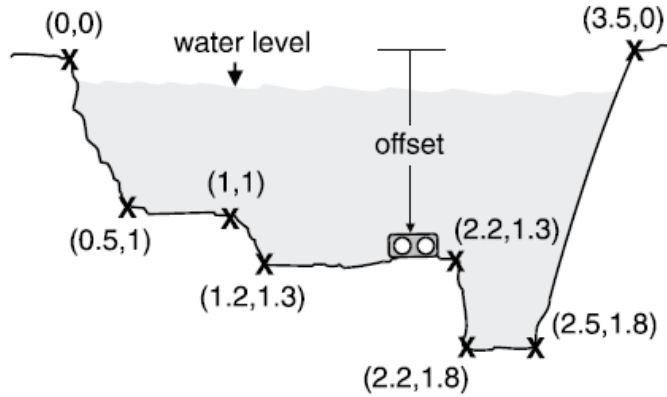
```
0 0
0 1000
1000 1000
1000 1300
2000 1300
2000 1000
3000 1000
3000 0
```

The Area Rating Table window for this application has these settings:



**Open Channel/Natural Stream Example 3:**

This Natural Stream is 3 metres wide with the shape illustrated below.

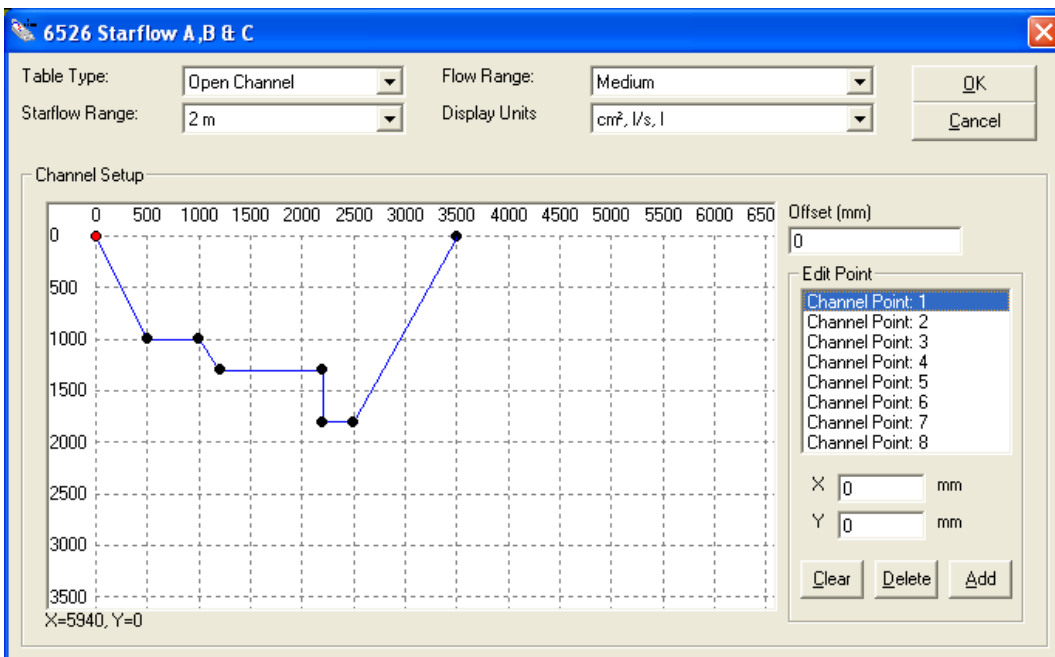


The Cross-Sectional Area File is shown below:

```

0 0
500 1000
1000 1000
1200 1300
2200 1300
2200 1800
2500 1800
3500 0
    
```

The Area Rating Table window for this application looks like this:



### 13.1.2 Other Applications

If the channel you are measuring cannot be defined in the Cross-Sectional Area File (such as a partly filled ovoid pipe) you must supply your own Area Rating Table. This is called a User Area Rating Table. This is only necessary if you cannot create a Cross-Sectional Area File. For most applications, the Area Rating Table is generated automatically from a Cross-Sectional Area File you create.

A User Area Rating Table is a text file with 1,000 entries spread evenly over the table range (as specified in the scheme) representing the cross-sectional area for each depth. For example, if the table range is 2m (2,000mm) then with 1,000 entries spread evenly, each entry is 2mm apart.

This table shows the depth for which each entry in the file represents an area:

Table Range	1m	2m	5m	10m
Entry 1	0 mm	0 mm	0 mm	0 mm
Entry 2	1 mm	2 mm	5 mm	10 mm
Entry 3	2 mm	4 mm	10 mm	20 mm
Entry 1000	999 mm	1998 mm	4995 mm	9990 mm

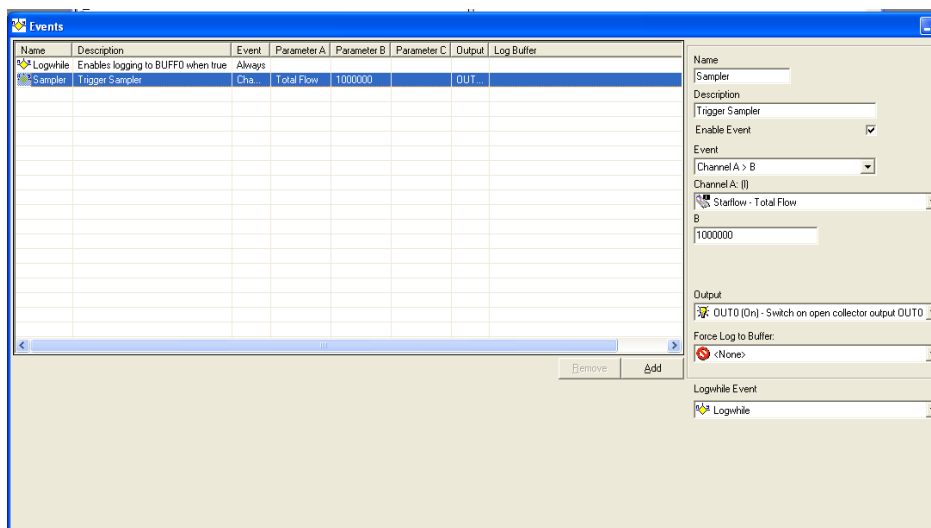
There is no special format for the file, only that each entry must be separated by whitespace (spaces, tabs or new lines) and that there are exactly 1,000 entries. The numbers must be positive (zero or greater) and may include a fractional part. The area values are in mm<sup>2</sup>.

### 13.1.3 Selecting Channels to Log

You may now select whichever channels you wish to record. You may not select AVE values to record for Flow Rate, Flow and Total Flow channels as these are already processed and cannot be averaged.

### 13.1.4 Event Processing on Extended Channels

These channels may be used to trigger events. For example, you may wish to trip (switch on) a water sampler after every megalitre has flowed through the channel. Using the 6526-cm Flow Extension (which measures in litres), the Event definition in this example would look like this:





## **14.0 COMPUTER COMMUNICATION**

The Starflow contains a Micrologger which is similar in operation to other Unidata Data Loggers. This section describes the detailed operation of this Data Logger and most users will not need to refer to this information.

### **14.1 Communications (Starlog) Protocol**

The Starflow communicates using standard asynchronous, RS-232 serial communication standards which allow it to communicate with a PC

The communication format is:

- RS-232C compatible
- 300 to 76800 baud (9600 baud default)
- 8 data bits, 1 stop/start bit, no parity

You connect a computer to the Starflow via the 9-pin socket which is part of the Model 6603D-SDI cable. This allows you to load and unload schemes and data.

If the interface is connected, the Starflow sends a prompt to the interface (host computer). This prompt is an ASCII asterisk followed by a carriage return ( \* c/r ).

The Starflow then waits 1 second for a request from the host computer. If no request is received the Starflow powers down (switches off). If a scan occurs during RS-232 communications then the measurement and reading will be processed.

### **14.2 Memory Layout**

The Starflow uses its data CMOS memory for:

- Hardware Registers - Storage of housekeeping registers.
- Logger Program - Storage of user scheme definition.
- Buffer Control Table - Storage of pointers controlling Log Buffer.
- Log Buffer - End of logger program to end of memory for recording measured data

### **14.3 Hardware Register Information**

The information contained in the header may be viewed in Test Mode or used by programmers wishing to write their own unload and analysis programs. The table below gives a description of each register numbered 0 to 255. For multiple byte registers the convention used is – least significant byte to most significant byte (LSB,MSB).

The Starflow, operating the standard instruction set, has the following fixed memory assignments in the Hardware Register:

Address	Size	Description
0	1	Software Revision number (40 onwards)
1	2	Log program runtime in milliseconds (16 bit integer)
3	1	Error flags (see Appendix A)
4	4	Scan counter (32 bit integer)
8	3	Reserved
11	2	Msb of address (bits 8 - 32) used in LDNLK & MVBLK instructions
13	21	Reserved
24	2	Counter channel C0
34	1	Arithmetic status register set by ADD, SUB, MUL, DIV instructions
35	5	Reserved
40	2	Serial number (16 bit integer)
42	8	Reserved
48	-	Reserved for Log Program variables
200	2	Water Depth (in mm)
202	2	Water Temperature in (0.1 °C)
204	2	Battery Voltage (in 0.1V)
206	2	Water Velocity (in mm/sec)
208	8	Reserved
216	2	Doppler Shift (Hz) A8 - Frequency
218	2	Distribution Quartile (%) A9 - Quartile
22	2	Number of Samples (#) A10 - Samples
256	128	Buffer Control Tables A11 - Signal
384	-	Log Program

#### **14.4 Starflow - Instructions**

The Starflow instrument incorporates a Starlog compatible Micrologger which is a data recording unit programmed using a computer. Its program resides in the first part of the logger's main memory (after the Hardware Registers and Buffer Control Table). It is defined by a user and loaded into logger memory from the host computer.

The logger program is executed every logger scan (from 15 sec. to 5 min.). The first instruction in the logger program is at Address 384. The Data Logger executes this program until an EXIT instruction is encountered (opcode = 0).

#### 14.4.1 Starflow - Operation Sequence

Every scan, the Starflow performs the following sequence:

Measure velocity, depth, temperature and battery and store their values in the Hardware Register area (from Address 200 on).

Execute the logger program (until EXIT detected).

If an RS-232 connection is sensed, send \* c/r prompt to Computer Port and wait for a response.

Shut down Starflow and await next scan time.

#### 14.4.2 Starflow - Program Instructions

A logger program starts at Address 384 and consists of one or more instructions. Each instruction is four bytes long (even though some instructions do not use all four bytes). An instruction takes about 0.5 millisecond to interpret and execute.

Typical instructions include:

```
TIMED GOTO Timer controlled logging sequences
CONDITIONAL GOTO Event controlled logging sequences
LOG DATA Flexible data storage command
(BLOCK) MOVE Block, Word and Byte move
ACCUMULATE Block summation for averaging
OUTPUT Control output sequences
BLOCK CLEAR Storage initialization
ADDITION 2 & 4 byte operands, 4 byte result
SUBTRACTION 2 & 4 byte operands, 4 byte result
MULTIPLICATION 2 & 4 byte operands, 4 byte result
DIVISION 2 & 4 byte operands, 4 byte result or 2 byte result & remainder
SERIAL INPUT/OUTPUT Bi-directional Data Bus read/write
```

### 15.0 STARFLOW SDI-12 INTERFACE

#### 15.1 Introduction

SDI-12 is an industry-originated, serial digital interface bus designed to allow an operator to connect a wide variety of transducers (meteorological, hydrological, water quality, etc.) to a single SDI-12 Data Recorder, such as a Starlogger, with a single cable bus. This means that you could, for instance, connect several Starflow instruments along with the other SDI-12 sensors to another Starflow instrument or a Starlogger (or another brand SDI-12 Data Recorder) and not have to worry about combinations of RS-232, parallel analog, BCD, serial analog, RS-422, etc. signal types.

A unique feature of Starflow is its ability to operate as an SDI-12 sensor or configure the Starflow's Micrologger to be an SDI-12 Data Recorder.

This appendix assumes that the reader is familiar with the operation of the SDI-12 Sensor (Sensor) and the SDI-12 Data Recorder (the Recorder).

## 15.2 Using Starflow as An SDI-12 Sensor

To use the Starflow as an SDI-12 Sensor, you must first set its SDI-12 Configuration as per “Configuring the Starflow as an SDI-12 Sensor” on page 28

The Starflow will continue to operate at its pre-set scan rate and will perform all the normal logging functions. Starflow measurements, RS-232 communications and data logging, coexist with SDI-12 interrogation.

Whenever an SDI-12 Data Recorder issues a START MEASUREMENT/SEND DATA sequence, Starflow immediately responds with the latest parameter readings.

In this mode, the SDI-12 command START MEASUREMENT does not initiate a new measurement cycle and the data is always valid and available for immediate retrieval by the Data Recorder.

### 15.2.1 Theory of Operation

When the Data Recorder sends a “break signal”, the Starflow awakens and captures the SDI-12 command following the break signal. If the command is valid, the Starflow reads its address setting to see whether or not its address is in fact being called, or if the address of some other device (at another location) is being sought. If the Data Recorder is looking for a different address, the Starflow will go back to sleep until another break signal is received.

If the address being sent belongs to the Starflow, it will scan the instructions coming from the Data Recorder to see what action is required.

The two most important commands at this time are:

**Measure:** If the Starflow receives the START MEASUREMENT command, it will report back to the Data Recorder the number of parameters enabled for measurement, and that these parameters are available to be sent to the Data Recorder immediately.

**Data:** If the Starflow receives the SEND DATA command, it will send the last parameter readings measured to the Data Recorder for storage.

### 15.2.2 Data Reported by Starflow Sensor

Starflow will respond to an SDI-12 interrogation with up to five parameters. Each parameter represents a Starflow 16-bit integer channel value (e.g., Water Velocity). The parameter is reported as a five (5) digit fixed point, signed integer.

For example:

2100	means 2100mm/s positive flow
-350	means 350mm/s reverse flow

The implied parameter scaling is the same as defined for Starflow channels:

Velocity	mm/s
Depth	mm
Temperature	.01°C
Voltage	.01V

### 15.2.3 Reporting Computed Flow Results

When Starflow is programmed with a flow computation scheme additional flow extension channels are available for reporting. These are:

Address	Type	Meaning
160	16 bit integer	Cross Sectional Area
162	32 bit integer	Flow Rate
166	32 bit integer	Flow
170	32 bit integer	Total Flow

**Note:** Limitations within SDI-12 do not allow 32 bit integer values to be reported without loss of resolution. Further limitations may occur in the SDI-12 Recorder’s ability to process large numbers. It is recommended that 32 bit channels be reported as 2 x 16 bit integer values (e.g. Flow Rate addr 162 scaled mm/s, addr 164 scale 65536 mm/s).

### 15.3 Starflow SDI-12 Implementation Notes

The following technical information describes Starflow’s implementation of the SDI-12 standard.

#### 15.3.1 SDI-12 Data Recorder Commands

Two Scheme Program instructions are used to control the SDI-12 Recorder operation:

- SDIGET** which collects measurements from the nominated SDI-12 sensor, and
- SDICONV** which converts the collected data for use by the Log Program.

Measurements may be converted into fixed point Short Integers (for manipulation by the Scheme), Floating Point Numbers (for logging by the Scheme) or an ASCII string.

- Integers are two bytes.
- Floating Point numbers are 4 bytes.
- An ASCII string is zero byte terminated.

#### 15.3.2 Data Recorder Coordination

Once an SDI-12 communication has commenced (SDIGET instruction executed) the SDI-12 Bus is busy and will ignore any subsequent SDIGET commands until the active measurement transfer is complete. The measurements are stored in memory, to be converted by a SDICONV instruction. Converted measurements (stored on Micrologger channels) may be further processed by the Scheme program and Logged.

Because most SDI-12 sensors (unlike the Starflow Sensor) require considerable time to make their measurements (typically 60 seconds), the Starflow Data Recorder remains powered up awaiting a response from the sensor. This mode of operation usually requires the Scheme Program to initiate SDI-12 Measurements (SDIGETs) two scans prior to the desired Log Interval.

The sequencing of the SDI-12 measurements is under the control of the Scheme Program (which is defined during Scheme Editing).

### 15.3.3 Measurement Errors

If during a data collection sequence (SDIGET) an error occurs, the sequence is retried a total of ten times (by default). A non-recoverable error causes the SDIGET instruction to report a “null” result and a subsequent SDICONV will not return any data (the channel readings remain unchanged from their last good reading).

### 15.3.4 Starflow SDI-12 Command Implementation

The following table shows which SDI-12 commands are and are not recognised:

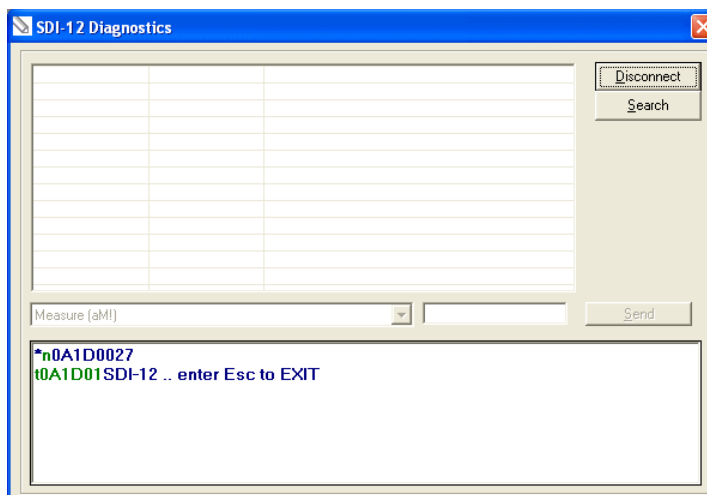
Command	Description	Sensor	Data Recorder
a!	Acknowledge	✓	X
aI!	Send identification	✓	X
aV!	Start verification	✓	X
aM!	Start measurement	✓	✓
aD0!	Send data	✓	S
aM1...9!	Start additional measurement	X	✓
aD1...9!	Send additional data	X	X
extended commands		X	✓

## 15.4 SDI-12 Test

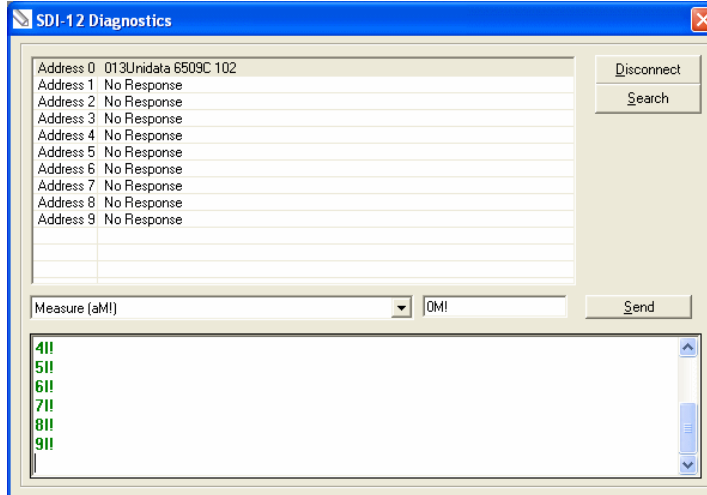
The **SDI-12 Test** function allows you to check the operation of the data logger as an SDI-12 recorder and the operation of any SDI-12 sensors connected to it. You are able to issue identify, measurement, and read commands.



When the window is first opened, click **Connect** to connect to the data logger and start SDI-12 diagnostics:

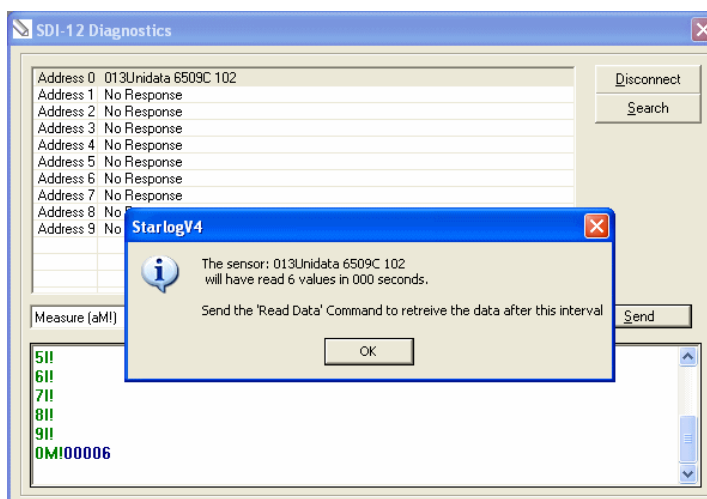


Next, click **Search** to send identification requests to the first ten sensors. The window will list any sensors found:

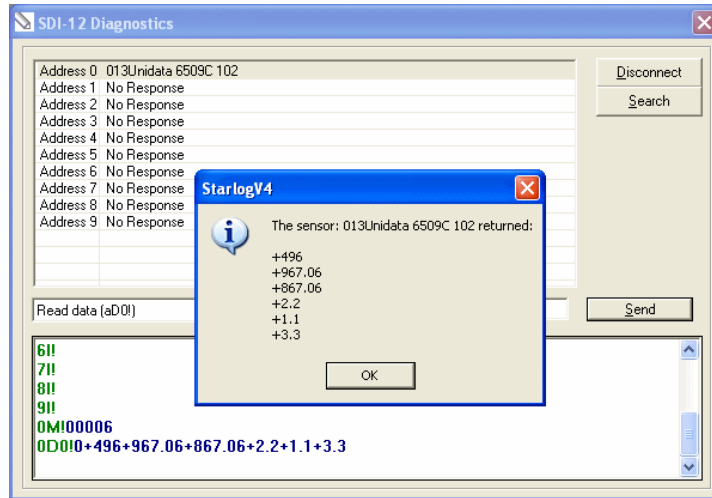


The above screenshot shows that there is a Unidata 6509C Water Level instrument, connected on address 0, and no other instruments on any other channel if using a Starflow it would appear with 6526.

To send commands to a sensor, select it from the list, then select the command to send from the drop-down list (the “Measure (aM!)” in the above screenshot). When you select a command, the actually command that will be sent on the SDI-12 bus is shown next to it (the “OM!” in the above screenshot). Click **Send** to send the command on to the SDI-12 bus.



If there is a response, it will appear in the communication log area, and the software will also provide an interpretation of the response. The above shows the response to a Measure command, the following is the response to a subsequent Read:



Note that different sensors will return not just different values, but different numbers of values. Most sensors will only return a single value.