

Our Most Popular Camera Heads – All Are Backwards Compatible

STANDARD DOWNVIEW CAMERA

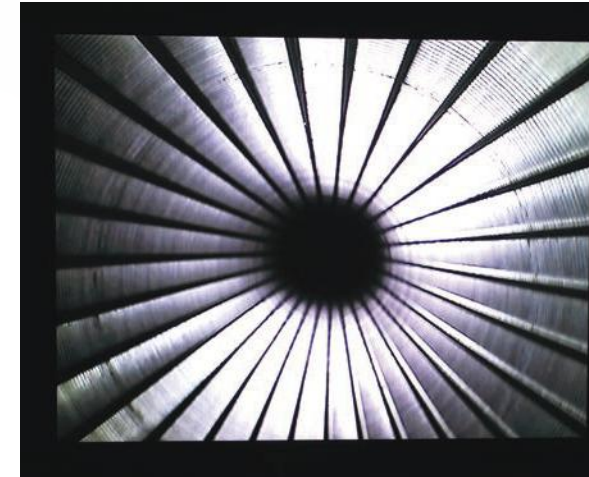
Model #WV-CP

Standard for all Well-Vu cameras is the detachable camera head making service and repair much simpler. This new camera head incorporates the latest technology video chip from Sony providing the highest quality image possible

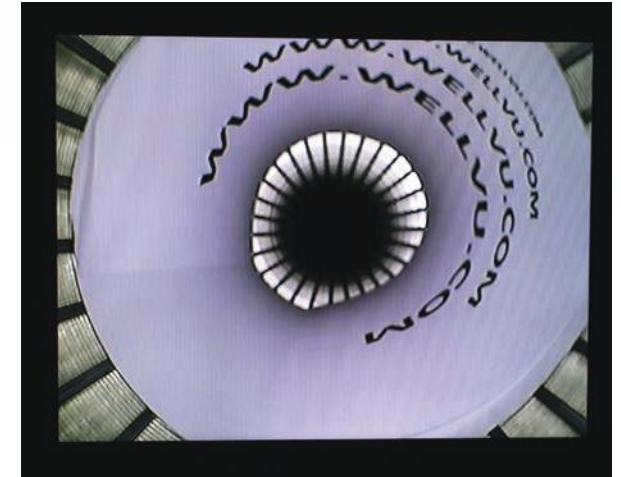
- Backwards compatible with all WellVu systems
- Sharp Resolution at 550 lines of resolution.
- Sealed for submergence to 1,000 feet.
- Shock resistant camera housing.
- Field Replaceable.
- Twist-lock connection.
- 18 Bright LED light.



ACTUAL VIEW OF 8" SCREEN



EXAMPLES OF SIDE DISTORTION

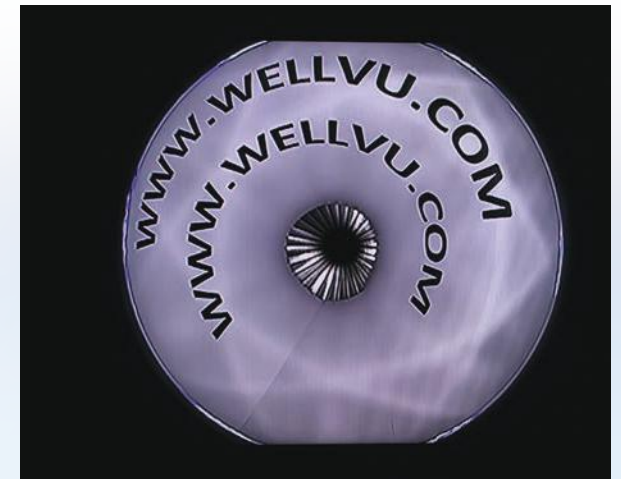
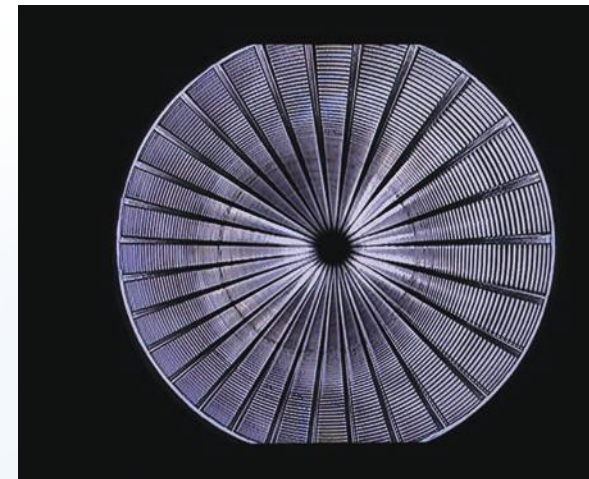


FISHEYE CAMERA

Model #WV-FISHEYE

Distortion free 184° hemispherical image. Get both side view and down view in one camera all on the screen at the same time. Incorporating the latest technology from the automotive industry for back up cameras, the side view image is true distortion free.

- Backwards compatible with all WellVu systems
- 1 3/4" stainless steel housing only 5 inches long.
- Side view and down view hemispherical image.
- Multi step led intensity.
- Submersible to 1,000 feet.
- Backwards compatible with all Well Vu systems.
- View the entire pipe wall at the same time, plus have a down view image.
- Inspection time is 65% less than other side view cameras.
- Luxeon LED's.
- Sony Imager.

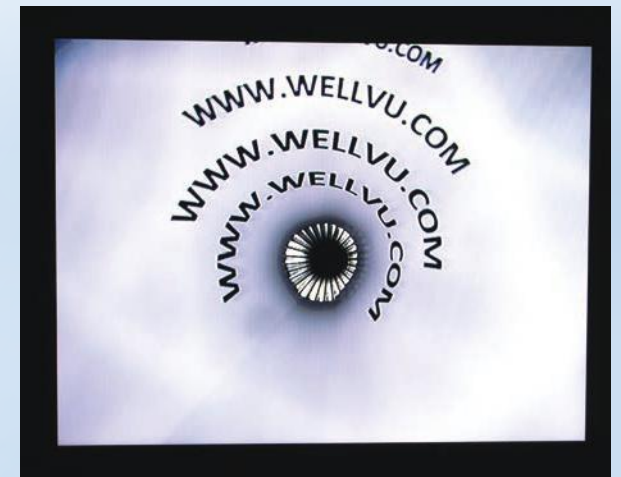
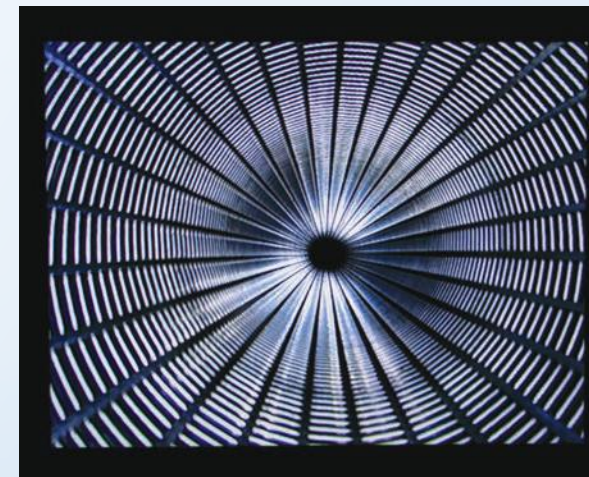
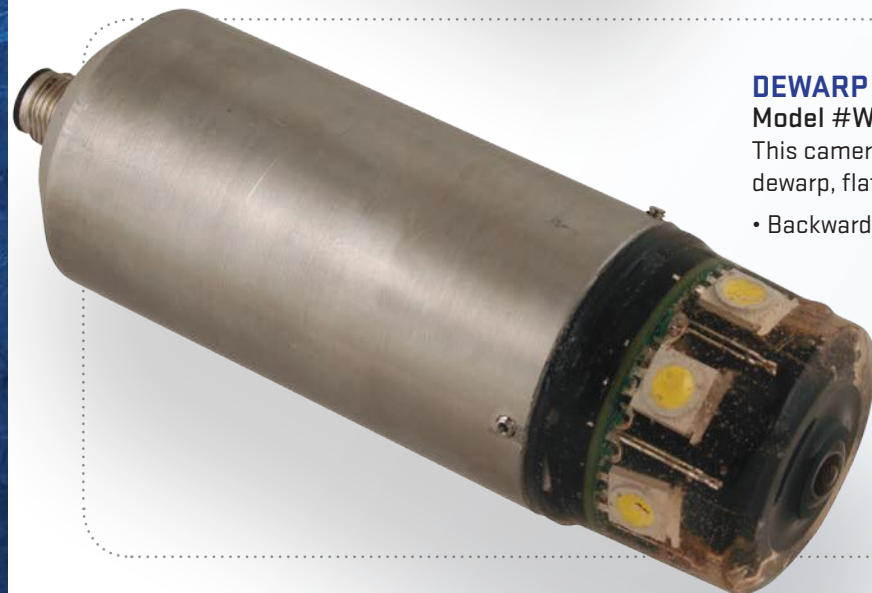


DEWARP FISHEYE CAMERA

Model #WV-DWFE

This camera is the same as the Fisheye except has firmware to dewarp, flatten the image so it appears like a side view image.

- Backwards compatible with all WellVu systems



Mini Cam



MINI CAM

OD: .827"
 Length: 4.34" (including rear connector)
 Weight: .35 lbs.
 Camera resolution: NTSC 656 (H) x 492 (V), 480 TV Lines
 Lighting: 5 chip LEDs, 0603
 Power: (cam 35ma), (LEDs 7ma @ 12vdc)
 Connector: Standard Well-Vu 12mm, 4pin, circular

* Backwards compatible with all WellVu systems (except Quad Cam)

Down View Camera

with On Screen TDS and water temperature



TDS CAM

OD: 1.75"
 Length: 7.52" (including rear connector)
 Weight: less than 2 lbs
 Camera resolution: NTSC 656 (H) x 492 (V), 480 TV Lines
 Lighting: 6 LEDs, 3mm, 7150mcd
 Power: (cam 35ma), (LEDs 30ma @ 12vdc), (TDS)
 Connector: Standard Well-Vu 12mm, 4-pin, circular
 TDS Accuracy: 5%

* The TDS is backwards compatible with all our camera systems. It has on screen display of GPS, camera head depth, water temp and TDS at the test depth.

1. Out of well, Well-Vu system "OFF", Rotate lighting potentiometer to "minimum" setting, TDS is powered "ON" with Well-Vu System.
2. Out of well, TDS is placed in calibration solution, then rotate lighting potentiometer to "maximum" setting.
3. TDS is lowered into well until desired depth is reached.
4. TDS is activated to take a reading by rotating lighting potentiometer to "minimum" setting and then to "maximum" setting.
5. To take next TDS reading, the Well-Vu system must be powered "OFF", then start again at step #1.

ACTUAL SCREEN IMAGE

