



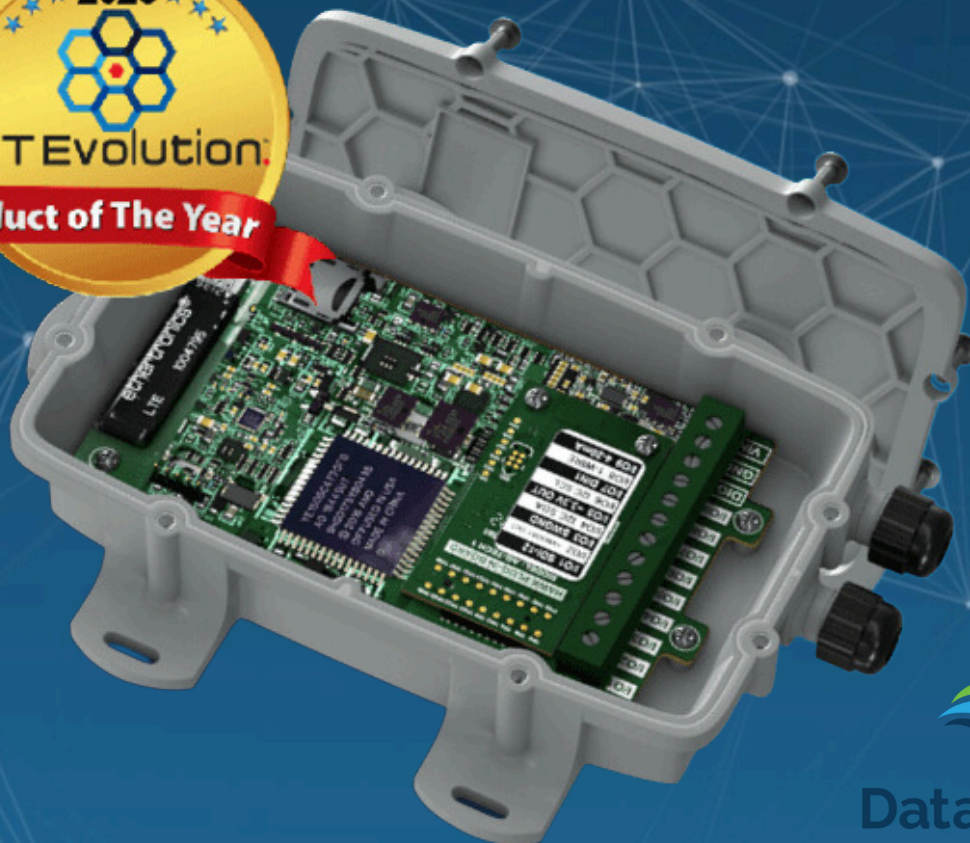
# HydroTerra

Environmental Monitoring Specialists

## Yabby 1

### Surface Water Cellular IoT Sensor Hub

Yabby 1 is a Surface Water Cellular IoT sensor hub with multiple integrated sensor options for Surface Water Level, Electrical Conductivity, pH, Turbidity and Temperature monitoring. Various mounting options includes pole, tank, stream and float (dam).



DataStream™

by HydroTerra

# Overview

Ultra-low power consumption only requires D cell batteries. Connectivity is provided via Telstra's Cellular LTE-M/NB-IoT Network. With a selection of integrated sensors, you can monitor surface water level, electrical conductivity and temperature for a number of applications. The hubs are waterproof with an ultra-rugged IP68 housing and bespoke lightweight aluminum brackets. Depending on your requirements other bespoke options can include a feature-rich array of 9 inputs/outputs and multiple sensor connectivity.



Up to 9 inputs/outputs and multiple sensor connectivity



Weatherproof and ultra-rugged IP68 housing with compact and ergonomic design



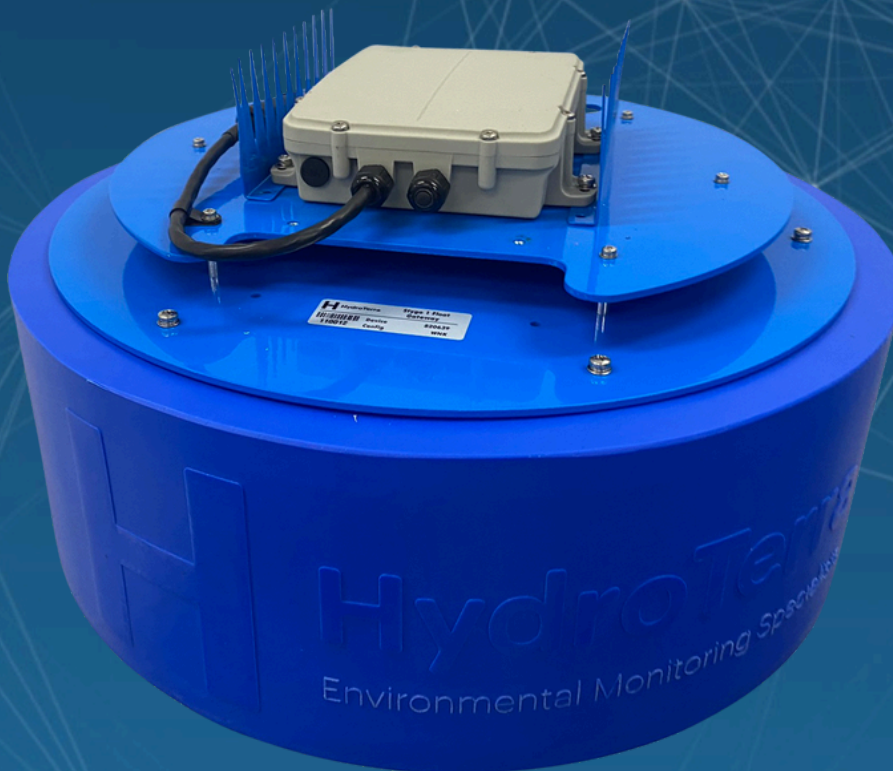
Ultra low power with battery life of up to 10 years



Cellular connectivity via Telstra's Cellular LTE-M/NB-IoT Network covering over 4 million sq km.



Includes anchoring system with 5kg weight for dams



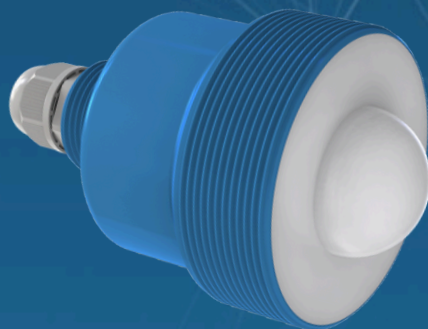
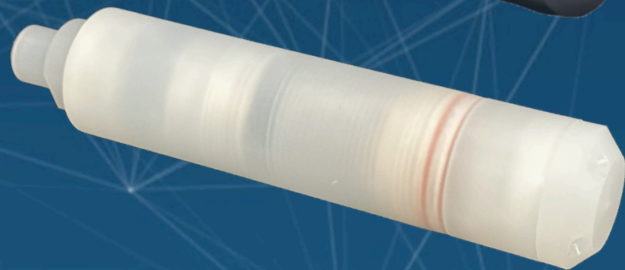
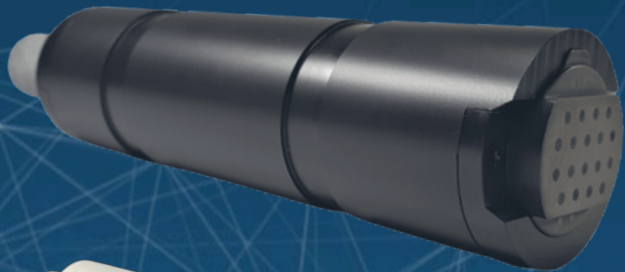
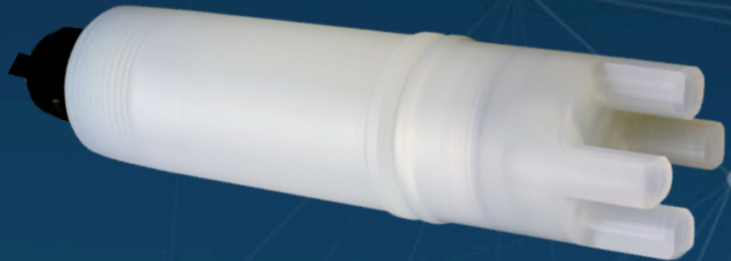
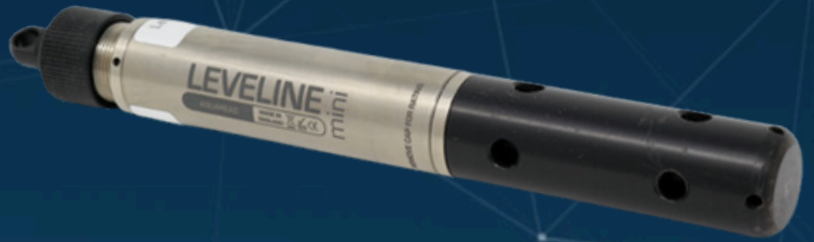
**DataStream™**

by HydroTerra



# Yabby 1

## Integrated Sensors Examples



## SMARTS

Configurable Alerts      Configure email and sms alerts based on levels & WQ remotely from our cloud-based device management system.

---

Adjustable Sampling Rate      Adjustable sampling rate from once per day to every 30 minutes (Default = 6 Hours)

---

Integration      Third-Party Integration Webhook, TCP or HTTPS

## TECHNICAL SPECIFICATIONS

### Power

---

Cellular 1      Internal 13.0 Ah Lithium Thionyl providing up to 10 years maintenance free operation. 20µA max (Low power operation), 2 mA (AI sampling w/o sensors), ~50mA (Alarm messaging).

---

Cellular 2      Choice of 3500mAh LiPo rechargeable battery with solar panel or 2 x D Cell LTC batteries for a completely self-powered solution. Input Voltage 6-28V DC (max).

---

### Input & Output Options

---

Cellular 1      Digital input/counter, 1 analog input, internal 3-axis digital accelerometer (optional), Built in battery monitoring, SDI-12 and MODBUS sensor data acquisition.

---

Cellular 2      Flexible I/O Card Architecture caters for plug-in cards that define the 9 inputs/outputs, offering limitless options for interfacing to sensors such as SDI-12, I<sup>2</sup>C, 1-Wire, iButton, 4-20mA, RS-485, RS-232\*, Analog Inputs, Digital Inputs, Pulse Counting, Digital Outputs, Switched Power, and more.

---

# HydroTerra Platform

## FEATURES



Monitor environmental sensors and device locations and parameters



Configure sample rates, device outputs and variable alerts



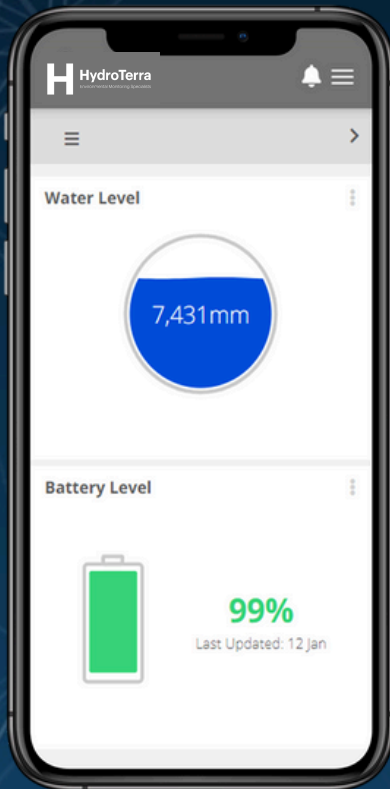
Control device outputs such as pumps, valves and gates



Receive SMS or email alerts based on variable thresholds



Download device data as csv files and images



## OVERVIEW

Sensors are remotely monitored with our custom cloud based platform. Interrogate volume and level trends, change sampling intervals and set SMS and email alerts. Our platform is flexible and modular meaning we can set it up the way you like from our library of maps, charts, gauges and controls.

## OTHER SERVICES

- Integrate other sensors to our platform
- White label the platform with your company branding
- Send your sensor data to third party platforms



DataStream™

by HydroTerra