

QUICK FACTS

Client: Heidelberg Materials

Location: Wollert, Victoria

Date: 2022-2025

Products: Flow meters, Level sensors, Telemetry, Custom Dashboards.

Service: Provide client with an ongoing monitoring system design and specification for an upgraded system utilising the DataStream™ platform.

OUR CLIENT

Heidelberg Materials Australia formerly known as Hanson Australia. They currently operate 210 concrete plants, 71 quarries, 4 asphalt plants, 5 recycling plants and 1 landfill site. Heidelberg Materials Australia supplies a comprehensive range of high-quality concrete, aggregates and sand, as well as road base, asphalt and sustainable and recycled construction materials for civil construction and infrastructure projects.



THE ISSUE

Heidelberg Materials Australia operates an engineered landfill facility receiving approximately one quarter of Melbourne's commercial, industrial and municipal waste disposal. The Wollert landfill required an upgrade to the integrated leachate monitoring system (sensors, telemetry and data management) currently installed at the site.

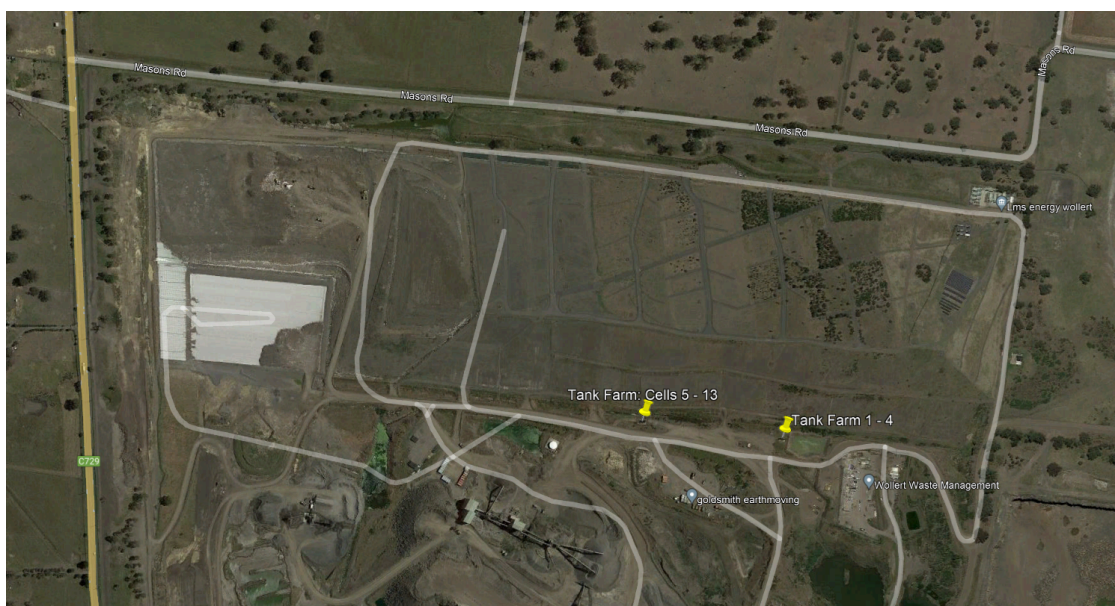


Figure 1: Location of existing monitoring instrumentation groups and telemetry stations

HYDROTERRA SOLUTION:

To help Heidelberg Materials stay compliant and in control, HydroTerra equipped leachate wells in Cells 1–4 and 14 with advanced monitoring systems. These upgrades now allow real-time tracking of leachate volumes being pumped from the cells.

What HydroTerra delivered:

- Installed high-precision flow sensors and pressure-to-level sensors
- Integrated the system with solar-powered telemetry (includes solar panel and data logger)
- Live data now streams directly to Heidelberg's DataStream™ platform for easy access and oversight
- Delivery of a client specific custom dashboard for display of leachate levels and precise reporting

The telemetry box includes a digital display from the flow meter, allowing real-time, on-site readings. This enables operators to manually open valves and immediately see flow rates.

INSTALLATION DETAILS:

- Flow meter
- Pressure to Level sensor
- Telemetry set up
 - Battery
 - Data Logger
 - Solar Panel
 - Solar Regulator
 - Custom dashboard in DataStream™



RESULTS:

All site installations were completed successfully. Heidelberg Materials now has full visibility over their landfill operations, with real-time leachate flow and level data accessible online through the DataStream™ platform.

